

# The Belleville Times

News

Vol. XXVI, No. 34

Entered as Second Class matter, May 26, 1910, at the Post Office at Newark, N. J., under the Act of March 3, 1879.

BELLEVILLE, N. J., THURSDAY, MARCH 1, 1951

Published Every Thursday By The Belleville News Corporation

828 Washington Avenue Telephone Belleville 2-3200

5c per copy, \$2.00 per year

## Leaders Ready to Kickoff Red Cross Drive Today



Aiming for a goal of \$26,402, the annual drive for funds staged by the Red Cross will get under way today with key workers in the campaign pictured above. Seated from left to right are Malcolm E. Condon, fund publicity; Mrs. Carl Hack, captain, section 10; Miss Dorothy Nell Darby, executive director Belleville Chapter; Mrs. Paul Van Ness, captain, section 9; Mrs. Charles L. Jaeger, captain, section 11; Mrs. Edward Puckhaber, member of the advanced gift committee. Standing left to right are Thomas J. McLaughlin, captain, section 16; Commissioner Harry J. Sullivan, chairman, residential division; Walter Gilby, captain, section 23; Ronald Davis, captain, section 21; Arthur H. Denzler, zone supervisor, area "C"; J. Claude Powers, chapter secretary, and general fund coordinator; Paul M. Kelley, general fund chairman, 1951 Red Cross fund drive.

## Cites Art Awards Here In Reply To Criticism

**Diehl, H. S. Director, Says Belleville Unparalleled Throughout State**

Refuting criticism over an alleged insufficient amount of money in the school budget for art work, and the charge that high school art work was not successful, high school principal Hugh Kittle this week forwarded to school board member Charles Yocum a report from P. Webster Diehl, art director at Belleville Tigh, in which accomplishments of graduates were outlined. The criticism was advanced at the recent hearing on the school budget by a PTA representative.

Diehl, a member of the State Committee on scholastic awards and appointed by the Associate Commissioner of Education, said his position afforded him an excellent opportunity to compare Belleville with more than 200 schools in the State. He stated that Belleville students have won more awards than students from any other high school and was certain that no other high school had even approached Belleville.

Diehl, a member of the State Committee on scholastic awards and appointed by the Associate Commissioner of Education, said his position afforded him an excellent opportunity to compare Belleville with more than 200 schools in the State. He stated that Belleville students have won more awards than students from any other high school and was certain that no other high school had even approached Belleville.

### Won CM Scholarship

"In talking about Pratt Institute I wish to call your attention to the record of Bill Armstrong, one of our students who graduated."

### Hold Garbage Truck Driver On Drunken Driving Charge

Leonard Mason, 39, of 22 South Center Street, Orange, is being held by police on a charge of drunken driving. Bail has been set at \$250 and a hearing scheduled for March 14.

According to police, Mason was driving a garbage truck owned by the Mahoney Trucking Company of Orange. Traveling west on Belleville Avenue, police say Mason struck a car owned by Alfred P. Westpy of town and kept going. He was pursued by Westpy and another motorist, who caught Mason at Parkway Avenue. Police were summoned and brought Mason to headquarters, where he was pronounced unfit to drive by town physicians Meehan and Underwood.

### Purple Heart to Marine



Pfc. Wallace J. McCullough, USMC, 19-year-old son of Mr. and Mrs. Archibald McCullough of 2 Cooper Place, has been awarded the Purple Heart for wounds received near the Chongsin Reservoir in Korea. He enlisted in the Marines three years ago, and had

## Seton Hall Wins 41-37 In See-saw Tournament

Bowing to a sharp-shooting band of young Pirates, Belleville failed to win its second straight Essex County Basketball Tournament title last night as Seton Hall upset the favored Bellboys in a ding-dong battle at the Pirate college court before a packed house. In turning back the Golden boys, the Pony Pirates kept the prized trophy, donated by the Newark News and Seton Hall University, in circulation for next year, although the Setonians take it over for the current season.

Seeded No. 1, the Bellboys had been the target of all teams in the tourney, but they outclassed East Orange, Montclair and West Side to gain the finals. Seton Hall tripped Immaculate Conception, West Orange and Central. It was the Pirates' first tourney crown.

## Quiet Session Marks Budget Hearing; Rate Is \$6.58

**Few Taxpayers, Few Queries As Record Expenditures Hit New High**

In one of the more quiet sessions in recent years, the 1951 budget, calling for a record expenditure of \$2,771,637 to be raised by local taxation and representing a 101-point tax increase over a year ago, survived the annual public hearing on Tuesday. Only a handful of taxpayers, 34 in all, supplemented by 14 town employees, sat in on the proceedings that will peg the Belleville tax rate at \$6.58 per \$100 of assessed valuation.

Most persistent questioner was Fred Och, president of School No. 7 PTA, who was representing that group at the hearing. He directed queries to Public Affairs Director King on relief and another series to Public Parks Director Hyde on a minor salary item.

### Hits Industry

Och's directed criticism at local industry. He charged factories

and plants here were not paying a fair share of the tax burden and contended the average homeowner was "bearing most of the freight." He cited the town's growth and the expansion of various public services and asserted that most of the added police and fire protection was brought about due to the expansion of industry. Och also claimed the town lacked suitable parking facilities for shoppers and said although he has lived here for more than 20 years, he is doing his shopping in other towns. He added that for the first time in 25 years of driving, he had been given a ticket for overtime parking on Washington Avenue.

In reply to Och's charge, Mayor Tully stated if any inequalities in assessments were brought to his attention, every effort would be made to straighten it out. The Mayor said other opinions have been advanced along the same line as Och's but added there were two sides to every question.

### Factories Are Backbone

Public Works Director Waters took up the cudgel for industry. He said the town had welcomed factories because Belleville is not

## Harmony Lodge Birthday

**Odd Fellow Group Was Organized Here in 1844, With Joseph Alden Serving as Noble Grand; Cite Charter Members**

One of Belleville's oldest fraternal organizations, Harmony Lodge No. 25, Independent Order of Odd Fellows, observed its 107th anniversary during the month of February. The lodge dates back to 1844, when the original institution took place.

Officers at that time were Joseph Alden, noble grand; Silas Ketchel, vice grand; Alexander Davis, secretary; Alexander Eagles, financial secretary and Simon Searing, treasurer. In 1871, the lodge was re-instituted with the following charter members: Cyrus Currier, John Clearman, John I. Briggs, Henry Marchbank, and Simon Weiner.

### Rendered Aid

Ever since its inception, Harmony Lodge has played a vital role in community life. Serving the fraternal and social needs of the town, the lodge, at the same time, has rendered invaluable assistance, financially and morally, to those in distress. Thousands of dollars have been distributed for the relief of stricken brothers, benefits to widows of deceased members and the payment of funeral expenses. A number of the aged of Harmony Lodge have been placed in the

Odd Fellows' Home in Trenton, where solicitous care from a trained corps of executives and attendants is available.

One of the humanitarian services rendered by Harmony and other lodges in the county is the Hospital Bed Program. In effect for several years, it provides hospital beds, wheel chairs and other health facilities to county residents.

### Special Post In Recreation

**Program To Deputy Director**

An ordinance creating the position of special activities supervisor of the town recreation department was passed on first reading Tuesday at the regular meeting of the Town Commission. The ordinance, introduced by Parks and Property Director Hyde, calls for the establishment of a part-time post to expand the present program sponsored by the recreation department.

Commissioner Hyde said yesterday the new job will be filled by his deputy director of the department, James Lanpman.

## No Flu Outbreak Here, But Health Dept. Gives Warning

**Cites Rules For Avoiding Disease; No Serious Cases Reported In Town**

An outbreak of influenza in many sections of the state has been noted recently, but according to local health officer Eugene Berry, Belleville has had no cases reported.

Berry traced the national increase to the epidemic in England that began in December, centering around Liverpool and gradually spreading throughout the British Isles. Transmission to this country and Canada by travelers, Berry said, probably stimulated the outbreak in the United States.

The health officer warned that changeable weather conditions, coupled with low body resistance, could contribute to the influenza rate unless certain precautions were taken. He outlined a series of simple rules to follow, and they are:

1. At the first sign of a cold, especially if you have a fever, go to bed and follow the doctor's orders.
2. Cover all coughs and sneezes with a handkerchief or paper tissue.
3. Do not encourage visitors.
4. Avoid needless contact with others, especially persons who are coughing, sneezing or sniveling.
5. Avoid exposure to inclement

weather but take advantage of as much air and sunshine as you can.

6. Be sure your home is well-ventilated at all times but avoid drafts.

7. Eat a balanced diet, drink plenty of water.

8. Guard against fatigue; get plenty of rest and sleep.

9. Wear clothing suitable to the weather.

10. Do not indulge in self-diagnosis, or self-treatment, especially in severe illness like influenza, as your physician may be able to administer appropriate anti-biotics and avoid severe complications.

### School Board Makes Teacher Appointments, Grants Leave

Teacher appointments were approved by the Board of Education at the regular meeting last week. The appointees included Miss Ruth M. Whidden, 40 Clearman Place, second grade No. 10 School; Ernest Freeman, who will fill the mathematics vacancy created by the promotion of high school faculty instructor William Chapman to principal of School No. 1; and Miss Dorothy Behan, former substitute at No. 7 who was given a permanent appointment.

The board approved a leave of absence for Mrs. Ruth Cabot, and Mrs. Louise King was named clerk at Schools Seven and Eight.

## SALARY ORDINANCE HIKES MUNICIPAL PAY MAXIMUMS

**Measure Passes Commission On First Reading To Meet Some Wage Boosts**

An ordinance adjusting the municipal salary guide was approved on first reading Tuesday by the Town Commission. The measure amended a previous ordinance establishing Civil Service titles and salary ranges. According to Mayor Tully, director of Revenue and Finance, the adjustments were necessary to enable the commission to grant salary increases to some departmental employees whose maximum did not allow for any wage boosts.

The Mayor emphasized that the ordinance only established the starting salary and the maximum to be attained and noted that most of the municipal workers were below the new maximums. The only department not included in the ordinance was Director Hyde's Department of Parks and Public Property. Hyde explained that a survey is now under way to classify all employees in his department, who heretofore have never been classified.

### Positions Cited

Top salaried positions in the various departments are as follows:

Public Affairs—Health officer, \$5,000 to \$5,500; plumbing inspector, \$3,900 to \$4,200; shade tree superintendent, \$3,900 to \$4,200.

Public Safety—Administrative clerk, \$3,900 to \$5,500; police chief, \$5,000 to \$5,100; fire

## NEW AUTO TAGS GO ON TODAY

**Abramson, Local Agent, Warns Of Anticipated Rush, Urges Early Procurement**

The annual rush for automobile registrations and drivers' licenses begins today, when the 1951 plates may be obtained and mounted on the vehicles. Motor Vehicle agent William Abramson of 500 Washington Avenue said yesterday he anticipates heavier volume at the local agency than a year ago, when 40,000 plates and licenses were issued.

Reservations for registrations are ahead of last year, Abramson said. He reminded motorists that cars must bear the latest inspection seal before plates will be issued.

The agency will be open from 9 a.m. to 5 p.m. Monday through Friday and from 9 to 12 noon on Saturdays during the month of March. All cars must bear the new plates, black with straw-colored numerals, not later than midnight, March 31.

## Ratable Analysis Has Home Owner Big Taxpayer

**Private Dwellings Contribute More Than Double Industry's Share For Carrying Local Tax Burden**

Homeowners are carrying 58 per cent of the tax load and more than double the amount of industry's contribution, according to a report on file in the office of tax assessor Arthur Clark. The Times-News learned this week. Based on ratables, the report shows homes assessed for \$25,488,200 while industry is levied on the basis of \$11,323,650. Other factors making up the town's total ratables of \$42,122,828 are commercial, \$4,282,800, or 10 per cent; apartment house dwellings, \$2,498,050, or 5 per cent, and farm stock, \$4,300, and second class railroad properties, \$51,378.

## IMPROVED PUBLIC RELATIONS AIM OF SCHOOL BOARD

**Yocum Chairman Of Committee That Plans Informative Program For Citizens**

In a move aimed at bettering public relations, the Board of Education, at its February meeting Friday, announced the formation of a publicity committee, with Charles H. Yocum, vice president and chairman of the teachers' committee, as its head. Eugene Kelly, president of the board, included Yocum in the committee appointments made last week.

Others named to committees were: Kelly, chairman building and grounds; Mrs. Homer Zink, health and legislative; Raymond McCann, finance; and Walter Loesner, textbooks, supplies and transportation.

According to Yocum, the public

(Continued On Page Two)

## Town Employees Petition Board For Weekly Salary Payments

A petition from 138 town employees seeking a change from semi-monthly to weekly wage payments was referred to Mayor Tully's department of Revenue and Finance this week. It was presented at the commission meeting Tuesday. Mayor Tully said he will report back to the board March 13, the next meeting. It is probable the petition will receive favorable action, the Mayor stating it would probably be workable in his department.

The petitioners said family budgeting arrangements would be more practical and easier on a weekly basis.

## CONCERT GROUP TO MEET TUESDAY

**Will Discuss Plans For New Season; Must Have More Members**

A meeting of the board of directors of the Belleville Community Concert Association has been called for Tuesday at the Town Hall at 8 o'clock to discuss plans for the 1951-52 season. It was announced yesterday by Association president Paul de Hagara. Urging all directors to be present, de Hagara said the board must also give consideration to the question of the Association's survival, pointing to the small membership in relation to the total population of the town.

At the January meeting of the organization, it was suggested that another method of selling subscriptions be considered. In that connection, de Hagara said Harold Welch, assistant eastern manager of the concert group furnishing the artists for the Belleville performances, will be present to explain the ramifications of the subscription sale.

### Next Concert March 20

A membership drive will be considered for the week of March 20, which will be prefaced by the final concert of the current season. Edna Phillips, concert soprano, is the guest artist at the high school auditorium. When the cultural Association was formed three years ago, more than 800 subscribed, which was sufficient to gainfully carry on the program. However, de Hagara said memberships the past two years have fallen off to about 500, and to survive the 1951-52 season, a minimum of 750 subscribers will be required.

## Appropriate Additional \$1,500 To Meet Running Track Cost

An ordinance appropriating the sum of \$1,500 in connection with the construction of a running track at the Municipal Stadium was passed on first reading by the Town Commission Tuesday. The amount was requested by Commissioner Hyde to supplement an earlier ordinance earmarking \$4,500 for the job. However, the lowest bidder's price was in excess of the previous appropriation and the board agreed to go along with the additional amount. The job calls for reconstruction of existing track, new additional track, wooden track curbing wooden steps at center of stadium and construction of a concrete ramp at south end of field.

## Dolls Have UN Tinge



Surrounded by a few of the dolls in a collection that reads like a geography book index is Miss Gertrude Peppel of Van Houten Place, who with her sister, Alice, not available when the picture was taken, has accumulated the colorful creatures for the past two decades. The tiny dolls, held in Miss Peppel's hand, are less than an inch long but dressed in authentic German and Guatemalan costumes.

When Miss Alice Stadelhofer of Allenhurst returned to the United States following a European junket in the '30s, bearing gifts in the form of dolls for her favorite nieces, she probably never realized it was the harbinger of a collection that, like Topsy, "has just grown." Today, Miss Gertrude Peppel and her sister Alice, daughters of Mr. and Mrs. Albert W. Peppel of 79 Van Houten Place, boast a joint collection of dolls that hail from the far corners of the world.

Initial recipient of the collection was Gertrude, dark-haired, diminutive and vivacious elder of the sisters. Alice, now an attractive, tall blonde, had just arrived on the scene. It was a brother and sister doll combination that started things, a handsome pair from Germany, appropriately named Hansel and Gretel. Today, through ingenious and tender care, supervised down the years by Mother Peppel, Hansel and Gretel stand staunch and steadfast, although on occasions it has been touch-and-go with loose heads and hands.

Few Nations Not Represented



### WEST END CLUB DANCE SATURDAY

#### Fourth Annual Affair Set For Terrace Ballroom; Pico, De Cepoli Chairmen

The West End Civic League will present its fourth annual dance Saturday night at the Terrace Ballroom. Music will be furnished by two bands, with Larry "Duke" Stabile alternating with Tony Novo's rumba band from New York City.

Sal Pico and Mike De Cepoli are co-chairman of the affair and are assisted in the arrangements by Al Quaresimo, tickets; Johnny "Nelson" Gesario, ad book; Joe Mobillo, boosters; Carl Haberstrohl, Nick Bonavita, Tony Pico and Tony Porcal, reception committee.

The club was chartered 13 years ago with a small membership until the West Enders now boast more than 100 active members, all active in civic and athletic affairs.

The present slate of officers includes Sal Sprella, president; Haberstrohl, vice-president; Quaresimo, secretary; Ralph Risoli, financial secretary and A. M. Christiano, treasurer.

### PLANS COMPLETE FOR CARD PARTY

#### Polio Benefit Sponsored By Tully Association At Elks Friday Night

Final plans for the James J. Tully Association card party to be held tomorrow evening (Friday) at the Elks auditorium, Washington Avenue and Van Houten Place, will be made at a committee meeting tonight.

The membership has voted to turn the entire proceeds of the affair over to the March of Dimes fund. Mayor Tully, being the chairman of the Belleville drive as well as the grand bearer of the sponsor association.

Over 100 tables have been reserved for card playing. Many valuable door prizes have been donated and will be awarded during the evening.

Michael T. Dacey is general chairman. Mrs. Edward A. Roebau and Mrs. Charles N. Whittemore are co-chairmen of the reception committee; Miss Anne J. Donovan and Miss Helen M. Kuhn are co-chairmen of the door prize committee; Mrs. Carl Schweikert is in charge of the table prizes; Mrs. Thomas P. Dowd and Mrs. Leland C. Kyle are in charge of the refreshment committee; cards and tallies are in charge of Mrs. Walter P. Oschwald. Co-chairmen of the decorating committee are William F. Tully and William R. Brickett. The door committee consists of Werner Tietze, Edward A. Hahn and William J. Friel. In charge of arrangements for the auditorium are Thomas P. Dowd, Francis H. McCoy, Arthur S. Ackerman, and George E. Meyer. The ticket committee is headed by Mrs. Walter E. Loewer and Miss Greta M. Kinnealy.

### INDUSTRY GROUP AIDS RED CROSS

#### Chairman Luscombe Meets With Committee, Seeking \$9,982 In Campaign

Members of the industrial division of the Red Cross met Tuesday at a luncheon in the Forest Hill Field Club. Under the chairmanship of Albert P. Luscombe, the group discussed phases of the annual Red Cross fund drive that begins today.

Luscombe, vice-president of the Peoples National Bank and Trust Company, announced he will be assisted by the following members of the committee:

Harry Berger, Great Atlantic & Pacific Tea Company, Laundry Division; Elwood Russell, Wallace & Tiernan; Clifford Strain, Walter Kidde; Winfield L. Boss, Igoo Motors; Ernest B. Wright, secretary and treasurer of Hanlon & Goodman; Robert T. Reed, Andrew Jergens; William H. Glover, Jr., Sweeney Lithograph; Arthur Dent, assistant treasurer, National Yeast Corporation; Kathryn Brodie, McGlynn Hays Industries; Fred Struehler, Union president, Eastern Tool; Peter H. Doland, personnel manager, Andrew Jergens Company; John Owens, A. M. Leacock Company; W. J. Jermick, Thomas A. Edison Incorporated; Harry Ziegler, George H. Mead, Incorporated; C. A. Van Riper, Essex County Isolation Hospital; Peter Gray, Beisler Weidman Company; Mrs. Dorothy G. Smith, personnel, Restoflex Corporation; C. H. Corbett, American Tag Company; Lillian C. Jones, Hoyer Products Company; J. Williamson, Coating Materials Laboratories Incorporated; Irene Filcher, Alford Allen Watts Company; Henry Riess, L. Sonneborn Sons, Incorporated; George E. Miller, Miller & Sons; John A. Wilkens, vice-president and treasurer of Sweeney Lithograph; W. A. Crowhurst, A. J. Crowhurst Sons; Luther Van Pelt, People's National Bank; I. R. Hollenberg, executive vice-president, Van Dyke Company, Incorporated.

Other committee members are still being recruited in an effort to have at least one representative from every Belleville industry among the committee personnel. Luscombe states that corporate gifts from local industries received as of February 14th total \$1,234.08 or about 12% of the goal, which has been set at \$9,982, or about 60% over the amount actually received in 1950.

### Funeral Rites Held Sunday For Mrs. Hubert F. Smart

Mrs. Caroline Eleanor Knight Smart, 62, of 138, Smallwood Avenue died Thursday in Mount Carmel Hospital after a short illness. Services were held Sunday afternoon in George Van Tassel's Community Funeral Home, 337 Belleville Avenue, Bloomfield. Rev. Dr. J. Charles McKirachan, pastor of Westminster Presbyterian Church, Bloomfield, officiated. Burial took place Monday in Restland Memorial Park, East Hanover.

Mrs. Smart was born in Salisbury Wills, England and came to the United States in 1919. She was a resident of Blackwood Terrace before coming to Belleville five years ago. An active church worker, Mrs. Smart was a charter member and organizer of the Blackwood Terrace Presbyterian Church, the Mother's Circle of Woodbury Chapter, Order of De Molay, and a past president of the Bloomfield Friendship Chapter of the order's Mothers' Circle. She belonged to Montgomery Presbyterian Church, Belleville, and Westminster Presbyterian Church, Bloomfield.

She leaves her husband, Hubert F. Smart, a supervisor for Congoleum-Nairn, Incorporated, Kearny; two sons, Raymond S. Smart of Syracuse, and Frank H. Smart of Montclair; and a granddaughter.

### Dolls

(Continued From Page One)

of the universal language to any little girl's heart, a doll. And behind a set of dolls from Genoa, Italy, attired in Lombardi costumes, lies a tale. They were brought back on the Italian liner Rex, the last ship to leave the Mediterranean nation with American tourists following the Italian declaration of war on France and England in 1941.

Probably the most unique items in the collection are a set of "dolls" dolls. Calling Mexico their home, the dolls are dressed in colorful costumes. Without a magnifying glass, the minute creates cannot be appreciated. Another tiny group, about three-quarters of an inch in length, attired in native dress, originated in Guatemala and Germany.

### Russian Dolls In Collection

Even the Iron Curtain has representation in the Poppel collection. Dolls from Smolensk, procured at the time when the Soviets were engaged in trying to make a five-year plan work after 10 years, have found their way to the Van Houten Place manse, once again through the generosity of Aunt Alice.

It would be simpler to cite the nations not included in the collection, but the dolls read like the roll call at a United Nations meeting.

Both girls have passed the stage where the dolls hold any interest other than as a collector's item. They are graduates of Belleville High and Gertrude has a degree from the Woman's College of the University of North Carolina while Alice is currently attending Katherine Gibbs School. Gertrude is now affiliated with the DeWitt Savings and Loan after serving as social editor of The Times-News for more than a year.

Right now, the dolls are relegated to a shelf, or series of shelves, carefully wrapped and indexed very ingeniously by Gertrude. Perhaps some day in the future other little girls, with the Poppel lineage, will reactivate the inanimate but beautiful, life-like creates to the status designed for them.

### Quiet

(Continued From Page One)

a rich town, being primarily comprised of a working class of people.

Our factories pay a lot of wages to Belleville residents," Waters, dean of the board, remarked. "In my 26 years on this board, I have never yet seen a case where the factories were proven to be carrying less than their share of the tax load. Industry must be encouraged and they should not be overtaxed, for they're the backbone of this town."

Mark J. Grady of Nolton Street asked the board why municipal salary increases were not included on a referendum, the same as the police wage boost. Mayor Tully replied it was not customary as the increases were based on demands from individual departments by different commissioners.

The only other query came from a citizen who claimed the garbage bid was too high and the town should have re-advertised until a lower bid had been received.

### Harmony

(Continued From Page One)

dents, without charge.

Members Prominent

From time to time, Harmony Lodge has met in various locations here and presently is meeting at the Masonic Temple on Joralemon Street. It numbers among its members many of the prominent citizens in town who have made salient contributions to the growth of Belleville.

Present officers are: Henry Abramson, noble grand; Maywood Atherton, vice grand; Halley F. Hickok, recording secretary; C. Chinnock, financial secretary and Howard Holmes, treasurer.

### Improved

(Continued From Page One)

ity committee will endeavor to keep the public, through the me-

### ELECTION NOTICE

#### REGISTRATION AND TRANSFER OF VOTERS for the PRIMARY ELECTION TO BE HELD APRIL 17th, 1951 will close March 8th, 1951.

If you have not already permanently registered to vote, or have changed your address, please see your Town Clerk, Town Hall, Belleville, N. J.

Office hours 9:00 A. M. to 4:30 P. M. Monday through Friday.

EVENING HOURS—March 5th, 6th, 7th, 8th—7:00 to 9:00 P. M.

LAST DAY FOR FILING COUNTY COMMITTEE PETITIONS March 8th, 1951.

FLORENCE R. MOREY, Town Clerk.

dium of the press, informed of school board matters. Over the years, some boards have been the butt of criticism from citizens, who have charged the board with too many closed conferences. Vocum said that keeping the public informed of board activities would probably result in added confidence in policies planned by the board.

### Salaries

(Continued From Page One)

chief, \$4,700 to \$5,100; deputy police chief, \$4,800 to \$4,900; deputy fire chief, \$4,300 to \$4,400.

Public Works—Administrative clerk, \$4,000 to \$6,000; municipal engineer, \$5,000 to \$6,500; assistant municipal engineer, \$3,900 to \$5,000; public works superintendent, \$3,900 to \$5,000; assistant public works superintendent, \$3,600 to \$4,600; public works foreman, \$2,800 to \$4,200.

Revenue and finance—Secretary to the Mayor, \$4,200 to \$5,800; town treasurer, \$5,000 to \$6,500; tax assessor, \$4,300 to \$5,600; assistant assessor, \$3,300 to \$4,300; administrative clerk, \$3,900 to \$5,500; assistant treasurer, \$3,800 to \$4,800; tax collector, \$4,300 to \$4,800; head clerk, \$3,600 to \$4,200; principal clerk, \$2,700 to \$4,000.

### Cites

(Continued From Page One)

ated from Pratt last year, and now is an automobile designer for General Motors Corporation in Detroit. Armstrong won the General Motors scholarship at Pratt two years in succession, something that had never been done by any student in the history of the school. In addition he won the Pratt Medal, as the outstanding senior in Industrial Design at the college. In high school he was a Scholastic award winner of a medal for painting.

"Before going on to list names, I would like to mention Phyllis Wall, Robert Valentino, and Naida Willette. When we sent Phyllis Wall to Parsons School of Design in New York they re-

ported that she had such a good foundation in high school that she was ready for second year art in the School of Design. She graduated in 3 years and the school selected her as one of a group to be sent to Europe for 3 months advanced study.

Robert Valentino is a scholarship winner. He completed his art training in New York, is trustee of the Art Students League in New York City. He is known as the painter of the portrait of Judge Van Riper, hundreds of portraits of wounded servicemen, as well as murals and decorations in many clubs and other public buildings. He is now a professional artist working as an illustrator and as a free lance artist. In high school he won "best in the state" in the Scholastic Competition.

### Lists Other Winners

"Naida Willette won a national award while in high school. A few years later I received a letter from the Rockefeller Foundation asking the verification of some information, before granting her a \$1,500 a year stipend for four

years of study (medical illustration at a Philadelphia hospital. "Since I do not want to take your time and the space to go into detail I will just list some of the others now.

"Perhaps you will recall that last year Belleville High School students won twelve ribbons, one second prize in the state, and two of our students won scholarships. The Scholarship winners were Elizabeth Hunkin and Lerna Chen.

"Some of the other former winners were:

Charles Weber, Scholastic award—now executive in an advertising agency.

Jack Weber, Scholastic award—now in an advertising agency.

Genevieve (Holland) Morgan, Scholastic winner—former designer with Vogue Magazine.

Mollie Leitzes, Scholastic winner, medal winner—dress designer for manufacturer.

Virginia Rose, Scholastic winner—professional sculptor.

Doris Davis, Scholastic awards certificate; graduate of Pratt Institute.

### Instruction

(Continued From Page One)

Lauterette. Lauterette disclosed that Town Building Inspector Thomas P. Greco, head of the Public Air Raid Shelter Committee, had submitted a report on the basis of a survey now being taken by Greco's committee.

Merchants Cooperate

Store along Washington Avenue, according to Greco, are now being contacted for the use of basements as temporary shelters in the event of an emergency. Merchants have been most cooperative, said Greco.

The Air Raid Shelter Committee has been divided into four sections, each with a leader. They are: William A. Boyd, industrial area; Walter C. Kelly, business area; Michael Trotta, residential area (including apartment houses) and Eric Peterson, public assembly areas (including churches). Boyd and Trotta are local architects and Kelly and Peterson construction superintendents.

Irene Cubberley, Scholastic awards winner—graduate of Pratt Institute.

Madeline Seebauer, Scholastic prize winner—magazine illustrator. (also Doehla Art competition winner)

Dagmar Carlson, Scholastic awards—Doehla Art competition winner.

Betty Schmutz, Scholastic award winner—college graduate.

Leonard Willette, winner six national awards.

Naida Willette, national award—also discussed above.

Walter Garvey, three first prizes in the national competition.

Roger Mellion, American magazine national award. Bob Valentino also won in this competition.

William Mackey, State award in Industrial Designs—now at Pratt Institute.

Frank Lakin, State award, Textile Design.

Thomas Jackrell, Scholastic winner.

Marjory Gardiner, State award, water color. Graduate Bucknell. Designer for greeting card company in New York."

## Come to Belleville's First National FIRST

### When Unexpected Expenses Make Borrowing Necessary



When you need money for any worthwhile purpose, don't hesitate to apply at Belleville's First National FIRST for a Personal Loan. More and more Belleville people have begun to realize that LOWER bank rates make monthly payments smaller and easier-to-carry. Our interest rates average only 50¢ a month for each \$100 borrowed. Begin preliminary arrangements by calling Belleville 2-3300. Or stop at the Bank any weekday from 9 to 2; or Monday evening from 6:30 to 8.

Since 1906

# Belleville's FIRST NATIONAL Bank

Southeast Corner Washington and Belleville Avenues

MEMBER FEDERAL DEPOSIT INSURANCE CORPORATION - FEDERAL RESERVE SYSTEM

### PROCLAMATION

WHEREAS, our country is now in a state of emergency, and

WHEREAS, the danger now facing us requires all our mobilization of national resources and manpower for adequate defense, and

WHEREAS, there is a mounting need for whole blood and blood derivatives for military, civilian and civil defense use, and

WHEREAS, the relentless war of the elements against mankind leaves in its wake destruction and suffering, and

WHEREAS, the American National Red Cross—under its congressional charter—is serving the armed forces, is mobilizing for defense for the protection of the family, the community and the nation, and is aiding the victims of natural disasters;

NOW, THEREFORE, I, James J. Tully, mayor of the town of Belleville, Council of New Jersey, proclaim the month of March, 1951, as RED CROSS MONTH, and do here and now urge all citizens of the community to contribute without reservation to the 1951 Red Cross Fund through our local chapter; and I further urge that all men and women of good will remember that in these critical times this great humanitarian organization must be maintained at full strength; and that this symbol of man's humanity remain bright as a guide to those who turn to it in time of need.

*James J. Tully*  
Mayor of Belleville.

# REAL home heating VALUE!

## A GENUINE GENERAL MOTORS DELCO-HEAT

DON'T LET THE COAL SHORTAGE WORRY YOU! ONE DAY CHANGE OVER TO AUTOMATIC HEAT


We can convert your present boiler or furnace to carefree, economical oil burning in just a few hours—with no discomfort to you or your family. Don't delay enjoying the comfort, convenience and economy of automatic heat merely because cold weather is here.

### COMPARE THESE VALUE LEADER FEATURES:

- Designed to burn distillate or catalytic fuel oils with maximum efficiency.
- Powered by the Revolutionary new Delco Appliance Rigidframe motor for quiet vibrationless operation.
- Specially designed turbulator gives positive 19 to 1 air oil mixture—saves fuel.
- Built and backed by General Motors Delco-Heat.

**Easy Terms 30 Months to Pay**

CALL THE 'K' MAN FOR FREE HEATING SURVEY & ESTIMATE YOUR SERVICE!

AT 

## MAKE THE "ONE-DAY" CHANGE OVER TO AUTOMATIC HEAT NOW!

— AT LOW COST TO YOU —

# KELLER ENGINEERING CO.

RUTHERFORD 2-0060

LICK THE COAL SITUATION and SAVE MONEY!



## Mrs. Maskell To Sail Aboard SS New Amsterdam March 30

Joseph Di Ruggieros Plan Engagement Party;  
Dr. and Mrs. Reock Entertain At Dinner;  
Tim Monaghans Have Anniversary

Mrs. George Maskell of 112 Hornblower Avenue and her sister, Mrs. Richard Pough of North Arlington, are planning a four-month trip through England, Scotland and Wales. They will sail March 30 aboard the S. S. New Amsterdam. While in Wales the sisters will visit their father, William Thomas, who resides in Blackwood, and other members of the family living in the country. At Cardiff, they will attend a performance of the opera company, of which their sister, Blanche Thomas, is a member. Mrs. Maskell and Mrs. Pough will tour England and Scotland by auto, and plan a short stay in London. They will be guests of honor Friday at a New York theatre and dinner party given by their nieces, Miss Florence Athay and Mrs. McKensie of Newark.

Mr. and Mrs. Joseph Di Ruggiero of 324 Joramemon Street, will give a buffet supper March 11 in the home of Dr. and Mrs. Frank Di Ruggiero, 221 Holmes Street, in honor of their daughter, Marie, and her fiancé, Thomas Slater. Among the hundred guests will be Mr. and Mrs. Arthur Slater and family of Belleville, Diane and Judith Di Ruggiero, Mr. and Mrs. D. Van Over and Mr. and Mrs. E. Smith of East Stroudsburg, Pa.; the Misses Betty Di Sturcio and Rose D'Elia of Belleville, Mrs. M. Perri of Pittsburgh, Pa.; Mr. and Mrs. C. Buffardi and children of Newark, Mr. and Mrs. C. Kreautler of East Orange, Mr. and Mrs. Joseph Coscarelli and children, Miss Joyce Cofone and Mr. and Mrs. James Di Ruggiero of Belleville.

Dr. and Mrs. Ernest C. Reock, 367 Washington Avenue, entertained at a family dinner held Washington's Birthday, in honor of their son, Lt. (jg.) Ernest C. Reock Jr. Present were Mr. and Mrs. Lester McCandless and their daughter, Laura, of Sheephead Bay, New York; Mr. and Mrs. Robert Weber and their daughter, Martha, of Richmond Hill, Long Island, and Miss Eliza Reock of Belleville.

Mr. and Mrs. Tim Monaghan of 49 Van Houten Place recently celebrated their 10th wedding anniversary in the Mayfair. Mr. and Mrs. Maurice O'Connor of Belleville were present. After dinner, the couple attended a St. Valentine Dance held in the Forest Hill Field Club.

Mrs. William P. Adams of 34 Rossmore Place entertained the past presidents of the Belleville Woman's Club Tuesday afternoon in her home. Guests were Mrs. R. Clifford Whitfield, Mrs. Elmer S. Hyde, Mrs. Frank J. Ackerman, Mrs. J. Claude Powers and Mrs. Fred Idendon.

Mr. and Mrs. Leonard Miller of Meadville, Pa.; their son, Pfc. James Miller, and Pfc. Robert Prothro of Shreveport, La., were recent guests of Mrs. Miller's son, William Crafferty of Brighton Avenue.

### Nutley Groups To Present Belleville Variety Show

The Nutley Masonic Craftsmen Club and Nutley Chapter, Order of Eastern Star, will present a Variety Show Saturday, March 10, at 8 p.m., in the Belleville High School auditorium. The seventy-five member cast show, will be the second one sponsored by the organizations in Belleville. The groups have previously given successful productions in Nutley for fourteen years.

The show will be given for the benefit of Belleville Assembly No. 3, Order of Rainbow for girls, and Suburban Chapter, Order of De. Molay for boys. Tickets are \$1.00, including tax.

### Seek Bids On Water Main

Bids for a proposed 10 in. water main in the west side of Main Street at Mill Street are being sought by the public works department. All bids must comply with specifications on file in the department and must be in the hands of the town clerk not later than 8 p.m. on Tuesday, March 13.

## BELLEVILLE COUPLE BECOME ENGAGED

Betrothal Of Miss Marie Di  
Ruggiero To Thomas Slater  
Is Announced



Miss Marie Di Ruggiero

The engagement of Miss Marie Ann Di Ruggiero to Thomas Slater, son of Mr. and Mrs. Arthur Slater, 70 Tiona Avenue, has been announced by the bride elect's parents, Mr. and Mrs. Joseph Di Ruggiero of 324 Joramemon Street. The couple are graduates of Belleville High School. Miss Ruggiero is employed in the office of Federal Radio and Telephone Corporation of Clifton, and her fiancé is with the Fire Insurance Rating Organization of New Jersey, Newark.

### Youngster Alden Auxiliary To Hold March Card Party

The Youngster Alden Jr. Auxiliary will sponsor a Card Party March 30 for the benefit of the Local and V. F. W. Cancer Fund Drive. Mrs. Helen Patterson, chairman, will have as her committee, Mrs. Theresa Singer, Mrs. Elizabeth Greenwald, Mrs. Ann Adelhelm, Mrs. Jennie Holly, Mrs. Elsie Lundy, and Mrs. Mae McEntee, president.

The group will present an American Flag to the Auxiliary Police at their next regular meeting, March 12. Nomination of officers will take place March 14.

**GIRLS**  
\$56.00 TO START  
For 48 Hour Week  
WIRING and ASSEMBLY  
of  
COMMUNICATIONS  
EQUIPMENT  
For Work In Our Belleville  
Plant  
Previous Mechanical  
Experience Preferred  
LIGHT - CLEAN WORK  
Apply in Person at Personnel  
Dept., Monday through Satur-  
day from 9 a.m. to 4 p.m.  
FEDERAL TEL. LABS  
500 Washington Ave., Nutley

## PHYLLIS CONKLIN IS FUTURE BRIDE

Bride-Elect Of Pvt. Byron Le  
Roy Witt, Who Is With The  
Eighth Army In Korea



Miss Phyllis L. Conklin

Mr. and Mrs. Robert Conklin of 75 Preston Street, have announced the engagement of their daughter, Phyllis Lorraine, to Private Byron Le Roy Witt, son of Mr. and Mrs. Byron L. Witt of 16 Ridgedale Avenue, Morris- town.

A graduate of Belleville High School, Miss Conklin is with the Fidelity Union Trust Company, Newark. Private Witt graduated from East Orange High School, and served with the Army for three years during World War II. He is now with the Eighth Army in Korea.

### Don Duffy On Dean's List

Don Duffy, son of Mr. and Mrs. William J. Duffy, 103 Overlook Avenue, a Junior at Upsala College, is on the Dean's List for receiving high scholastic marks during the first semester. Mr. Duffy, a graduate of Belleville High School, is majoring in Business Administration.

## Bride



Mrs. Eugene Graffeo

## MARIE SPERA'S NUPTIALS HELD

Wed Saturday To Eugene  
Graffeo In Holy Family  
Church Ceremony

The wedding of Miss Marie Spera, daughter of Mr. and Mrs. Anthony Spera, 123 Chestnut Street, to Eugene Graffeo, son of Mr. and Mrs. Phil Graffeo of 93 Emmet Street, took place Saturday in Holy Family Church, Nutley. Rev. Francis Blake performed the ceremony. A reception followed in the North Newark Academy.

Maid-of-honor was Miss Jennie Amato of Belleville. The Misses Diane Molinari of Newark, and Jeanne Felczak of Arlington were bridesmaids. Mario Graffeo, brother of the bridegroom served, as best man, Daniel Spera, the bride's brother, and Anthony Graffeo, another brother of the bridegroom, were ushers. All the bridegroom's attendants were from Belleville.

The bride's crown was skinner satin and champaign lace. A half-crown of seed pearls held her

## MARY JANE WARD IS BETROTHED

She Will Be Future Bride Of  
Bloomfield College Alumna,  
Frederick W. Jackson Jr.



Miss Mary Jane Ward

Announcement has been made of the engagement of Miss Mary Jane Ward, daughter of Mrs. Charles F. Ward of 53 Overlook Avenue, and the late Mr. Ward,

finger tip veil and she carried a white orchid surrounded by white roses. Miss Amato was dressed in forest green faille taffeta with a matching crown headpiece. Her bouquet was composed of yellow roses with pea green strainers. The bridesmaids wore champagne colored faille taffeta gowns and matching headpieces. Their flowers were American beauty roses with red streamers.

The bride attended Belleville High School and is employed with the Liberty Mutual Insurance Company, Newark. Mr. Graffeo also attended Belleville High School and is with Meads and Miller Company, Nutley.

The couple will reside at the Emmet Street address following a one week trip through Virginia and Washington.

## Irrington Girl Affianced To Edward P. Redeker

Mr. and Mrs. Edward W. Schantz of 34 Greene Terrace, Irrington, have announced the engagement of their daughter, Caroline Justine, to Edward P. Redeker, son of Mr. and Mrs. Charles E. Redeker of 203 Holmes Street.

A member of the staff of Irrington General Hospital, Miss Schantz, is a graduate of Irrington High School and Middlesex General Hospital School of Nursing. Mr. Redeker is a graduate of Central High School, Newark, and served three years with the Navy. He is employed with the New Jersey Bell Telephone Company.

to Frederick W. Jackson Jr., son of Mr. and Mrs. Frederick W. Jackson, 143 Academy Street.

The couple are graduates of Belleville High School. Miss Ward is employed as a service representative by the New Jersey Bell Telephone Company. Her fiancé is a graduate of Bloomfield College and Seminary, and is an Army veteran.

## Josephine Lanno Is Engaged To Private Anthony Coppla

Mr. and Mrs. Jerry Lanno of 31 Elmwood Avenue, announced the engagement of their daughter, Josephine, to Private Anthony Coppla, son of Mrs. Mary Coppla of 132 Center Street, Nutley, and the late Mrs. Coppla, at a birthday party held Saturday in honor of the bride-elect's father.

Miss Lanno attended Belleville High School. Her fiancé, now stationed in Fort Dix, is a graduate of Belleville High School, and was formerly employed with Ronson Art Metal Works Incorporated, Newark.

## Clare Finnerty Prospective Bride Of Edward King, Jr.

The engagement of Miss Clare Margaret Finnerty to Edward E. King Jr., son of Mr. and Mrs. Edward King of 104 Overlook Avenue, has been announced by her parents, Mr. and Mrs. John Finnerty of 330 Hamilton Street, Harrison.

A graduate of Holy Cross High School, Miss Finnerty is employed in the classified department of The Newark News. Her fiancé is a graduate of Belleville High School and attends Seton Hall University College. Employed with

## Natalie Jantzen Future Bride Of Jack Hammell

Announcement has been made by Mr. and Mrs. Frederick N. Jantzen, 92 Bremond Street, of the engagement of their daughter, Natalie Ann, to Jack H. Hammell, son of Mr. and Mrs. Henry Hammell, 44 New Street. Both are graduates of Belleville High School. Miss Jantzen is attending the Washington School for Secretaries, Newark. Mr. Hammell attended Newark Preparatory School and is employed with Hammell and Sons Woodworking Company, of Belleville.

## Local Girls Co-Chairmen Of St. Barnabas' Dance

Co-chairmen of a "Prelude to Spring" dance which will be given by the graduate nurses of the Hospital of Saint Barnabas and for Women and Children, Newark, on March 2 at 8:30 p.m. in the Forest Hill Field Club, Bloomfield, are the Misses Arlene Eichorn of 274 DeWitt Avenue, Belleville, and Lucille Estabrook of 220 Greylock Parkway, Belleville.

the Public Service Electric and Gas Company, he is a veteran of two years service in the Navy.



GOT A DOLLAR?

That's enough to open a Special Checking Account. Over and above that, all you need is enough to cover the checks that you draw.

If you do not wish to maintain a sufficient balance to pay for its operation in a regular checking account, the Special Checking Account is the checking account for you.

### ADVANTAGES

- ... No monthly service charge.
- ... No charge for deposits.
- ... No minimum balance required.
- ... The only cost is \$2.00 for 25 checks.

Interest Paid on Savings Accounts at 1½%

## Peoples National Bank and Trust Company

237 WASHINGTON AVENUE Opposite the Post Office

Member Federal Deposit Insurance Corporation

Member Federal Reserve System

Private Parking Lot for Customers' Convenience While Banking Here

## PLUMBING BORMANN HEATING

Let Us Survey Your Home For

## GAS HEATING

COMPLETE UNITS -- CONVERSIONS

Convenient Payments Arranged

45 MERTZ AVENUE Phone BE 2-3247 BELLEVILLE 9, N. J.

Member National Association of Master Plumbers, Inc.

Member American Society of Sanitary Engineering

## FEDERAL DEPOSIT INSURANCE CORPORATION

WASHINGTON, D. C.

Whereby certifies that pursuant to the Federal Deposit Insurance Act of the Congress of the United States each depositor is provided maximum deposit insurance of \$10,000 in

In testimony whereof, assistant secretary and the seal of the Corporation this 21st day of September, 1948.

Interest Paid on Savings Accounts at 1½%

## Peoples National Bank and Trust Company

237 Washington Ave. Opposite the Post Office

Member Federal Deposit Insurance Corporation

Member Federal Reserve System

Private Parking Lot for Customers' Convenience

While Banking Here

## the family's choice for home FUN

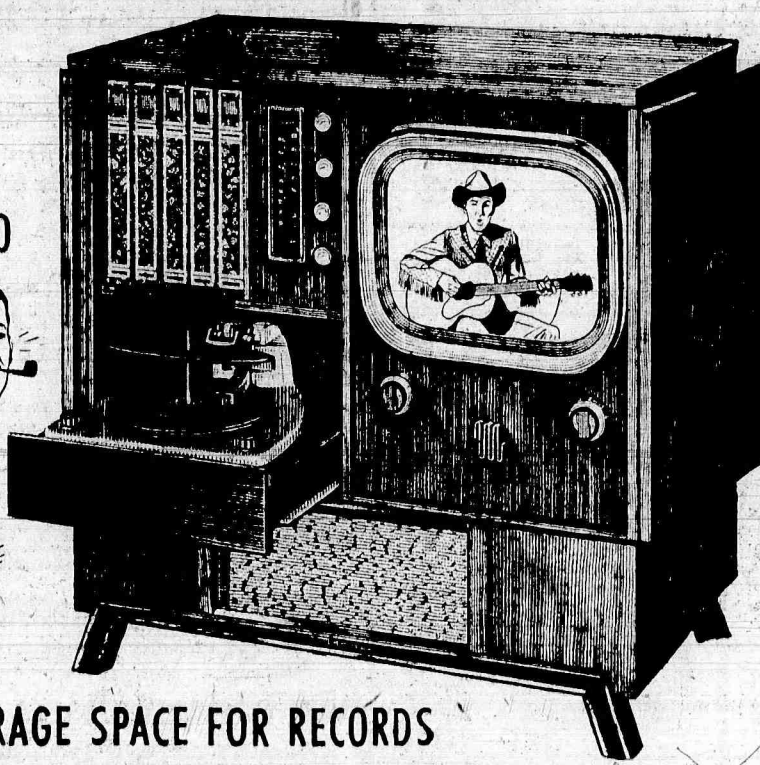
### BIG AS LIFE TV



### FM & AM RADIO

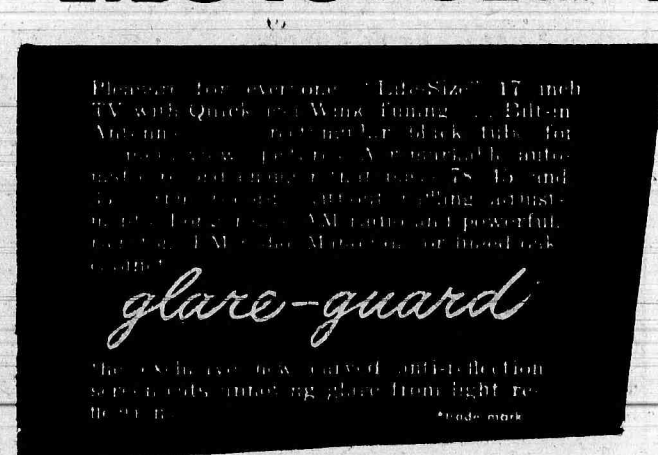


### 3 SPEED AUTOMATIC PHONO!



STORAGE SPACE FOR RECORDS

## Motorola TV



glare-guard

The glare-guard new curved anti-reflection screen cuts annoying glare from light re-

MODEL 17F6  
ONLY

529.95

65 Weeks to Pay

Liberal Allowance on Your Present Small Screen TV Set

## Jersey APPLIANCE CO.

529 WASHINGTON AVE.

BELLEVILLE, NEW JERSEY.

Serving Belleville for Our Fifteenth Year  
Parking In Rear Of Store - - - - - Open Evenings

BE 2-1330  
BE 2-1616



Times Classified Advertisements To Sell, Buy or Trade Telephone BELleville 2-3200

**Card of Thanks**

FINDLAY: Deeming it impossible to thank all in person, we take this means of expressing our heartfelt thanks to our relatives and friends for their expressions of sympathy at the recent loss of our beloved wife and mother, EUPH. EMIA O. FINDLAY. Special thanks to Rev. James K. Morse and Funeral Director George F. Kierman.

BEREAVED HUSBAND, SONS AND DAUGHTERS.

**For Sale-**

FOR QUICK SALE, odds and ends for a child; desk set; table; tricycle; scooter; junior chair; bench; saw, and other items; all for \$10.00. Telephone Krueger at Belleville 2-4982.

GARAGE WINDOWS, three, 5'x 4 1/2'; glass. 342 Washington Avenue, telephone Belleville 2-4988.

BOY'S BICYCLE, 26"; good condition. Telephone Belleville 2-3827-R or call after 6 p.m. at 168 Holmes Street.

REFRIGERATOR, Coldspot, 1941. 472 Washington Avenue or telephone Belleville 2-3310-J.

BOY'S WOOL SUIT, blue, size 9; girl's wool reversible coat and plaid wool jumpers, size 6. Telephone Belleville 2-5572-M.

A SINGER light weight electric portable, 6 months old, fully guaranteed, parts and service, \$59. A Singer, round bobbin, cabinet model, \$69.. Telephone Bloomfield 2-4258.

**Help Wanted - Male**

ASSEMBLERS - MACHINE

Familiar with fitting and assembly of machine parts

BLOOMFIELD TOOL CORP.

35 Farrand St., Bloomfield, N. J.

GRINDERS

Surface - Internal - External

BLOOMFIELD TOOL CORP.

35 Farrand St., Bloomfield, N. J.

JIG BORERS

BLOOMFIELD TOOL CORP.

35 Farrand St., Bloomfield, N. J.

**For Rent**

GARAGE TO LET on DeWitt Avenue between Belleville Avenue and Lloyd Place. Harvey B. Thompson, Realtor, 302 Washington Avenue, Telephone Belleville 2-2712.

**Furnished Rooms**

CLEAN SUNNY DOUBLE ROOM for one or two business gentlemen. Separate entrance. Private home. Near all transportation. 186 Holmes Street.

FURNISHED ROOM, next to bath. Private home. Convenient to buses. 22 Broadway Street or telephone Belleville 2-5148-M.

SLEEPING ROOM for a business gentleman. Large closet. Near all transportation. References exchanged. 161 Holmes Street, southwest corner of Prospect Street. Telephone Belleville 2-3407-R.

**Electricians**

ELECTRIC APPLIANCE HOSPITAL for vacuum cleaners; washing machines; electric, steam and traffic lights; lamps; toasters; fixtures, outlets installed. John Moyer, 29 Mertz Avenue or telephone Belleville 2-6511.

FIXTURES AND OUTLETS installed and repaired. No job too small. Prompt service on all electrical appliances. All work guaranteed. Telephone William Ellison at Belleville 2-1653.

**Furnace Cleaning**

FURNACES, CHIMNEYS vacuum cleaned; oil burner service; reasonable. Telephone Wilbur D. Perkins at Nutley 2-7247.

**For Sale**

THREE REAL REASONS WHY YOU SHOULD BUY A GOOD USED CAR NOW

(1) Prices are low at this time.

(2) A shortage of both new and used cars now exists.

(3) Proposed taxes mean higher prices.

BUICK 1946—Super sedan; fully equipped; excellent paint... \$1,050

BUICK 1949—Roadmaster sedan; dynamometer, an exceptional car 1,900

OLDSMOBILE 1946—60 sedan; hydramatic drive; a real good buy... 995

DODGE 1947—Sedan; maroon in color; Mechanically good; one owner... 995

LINCOLN 1948—Club coupe; over-drive, automatic windows; black in color... 1,195

MANY OTHERS

Trades Accepted

Easy G.I.A.C. Terms

Open Evenings Till 5:30 P.M.

Saturdays Till 1:30 P.M.

BELLEVILLE-NUTLEY BUICK COMPANY

66-68 Washington Avenue Nutley 2-0500

**Help Wanted - Female**

COUNTER GIRL, sandwich and salad experience. Short hours. Apply Mac's Bar-B-Q, 568 Washington Avenue.

GIRLS: Musically inclined for tuning musical parts; string instrument players preferred. Excellent working conditions. Good pay. Proil Products Co., 104 Verona Avenue, Newark.

GIRLS WANTED for light drill press work. Thor Ceramics, Inc., 225 Belleville Avenue, Bloomfield.

YOUNG LADY, about 18, refined and alert, for general office work, especially filing. Must be able to type accurately and willing to learn switchboard telephone operating for relief purposes. Fine opportunity, pleasant surroundings, generous vacation and free hospitalization, medical and surgical, after a period of probation. Ten paid holidays. Hours 9 to 5, five day week. Write stating salary to start and experience, if any. Sweeney Lithograph Company, Inc., 69 Academy Street.

**Help Wanted - Male**

YOUNG MAN, clerk-typist; purchasing, time and cost department work. Apply giving experience and salary desired to Box No. 853 Belleville Times-News.

**ENGINE LATHE OPERATORS**

BLOOMFIELD TOOL CORP.

35 Farrand St., Bloomfield, N. J.

HORIZONTAL BORING MILL OPERATORS

TURRET LATHE OPERATORS

BLOOMFIELD TOOL CORP.

35 Farrand St., Bloomfield, N. J.

**AMAZING OFFER**

\$59.00

Brand new 1951 electric sewing machine, Singer round bobbins, new back and forth, darning, in cabinet, 20-year guarantee. Can be seen at Broad Street Appliance, 160 Broad Street, Newark. Telephone Humboldt 5-9744.

WHEEL CHAIR, A-1 condition; \$20.00. Write to Box No. 857, Belleville Times-News.

BOYCYCLE, girl's, 28-inch; good condition; also Philco radio-phonograph. Telephone Belleville 2-3250-M after 5:30 p.m.

**MECHANICS**

Maintenance & Machine Repair

BLOOMFIELD TOOL CORP.

35 Farrand St., Bloomfield, N. J.

**TRUCK DRIVER**; small clean shop. Overtime; good working conditions. Telephone Belleville 2-1940.

UNIVERSAL SAIL FOOD MARKETS

595 BROAD ST., NEWARK  
OPEN WEDNESDAY NIGHT UNTIL 9

1020 BERGEN ST., NEWARK

250 CENTRAL AV., ORANGE

630 ST. GEORGE AVE., LINDEN  
6411 PARK AVE., WEST NEW YORK  
12 TUBE CONCOURSE, JERSEY CITY  
146 MAIN ST., HACKENSACK  
315 CLETON AVE., CLIFTON  
710 BERGEN AVE., JERSEY CITY

OPEN TONIGHT TILL 9

Open Friday 8 A. M. to 10 P. M.  
Other Days to 6 P. M.  
WE RESERVE THE RIGHT TO LIMIT QUANTITIES.

176 LINCOLN ST., E. Orange

FRELINGHUYSEN AVE.  
Opp. Durant Bldg., ELIZABETH

524 WASHINGTON AVE.  
BELLEVILLE

**LUX** TOILET SOAP reg. size 9c

Bath Size 2 for 25c

**LIFEBUOY** SOAP bath size 2 for 25c

reg. size 9c

**IVORY** SOAP 2 small size 19c

**SWAN** SOAP small 2 for 19c large 2 for 31c

**OXYDOL** large 32c giant 83c

**GOLD DUST** POWDER Large 25c Box

**LUX** FLAKES large 32c box

**SILVER DUST** Large Box 33c Giant Box 63c

**SPRY** PURE VEGETABLE SHORTENING 1-lb. 3-lb. 39c 1.09

**PARD** DOG FOOD 2 tall cans 27c

**RINSO** large 32c giant 61c

**SWIFTNING** 1-lb. 38c 3-lb. 1.05

**WOODBURY** FACIAL SOAP Reg. Size 9c 2 Bath Size 25c

**SWIFT'S** CHOPPED HAM 12-oz. can 51c

**SPIC AND SPAN** large box 83c

**PREM** 12-oz. can 49c

**SAVE BOTH WAYS**

**LOW PRICES EVERY DAY**

**Plus SUPER SPECIALS THURS. FRI. SAT.**

BREAST OF CHICKEN FANCY WHITE MEAT

Albacore Tuna Fish 1/2-lb. can 43c

SAYOIA RAVIOLI IN Tomato Sauce 1-lb. jar 19c

CHEF BOY-AR-DEE Spaghetti Dinner 1-lb. pkg 41c

SALAD BOWL Mayonnaise 1-lb. jar 45c

SALAD BOWL Salad Dressing 1-lb. jar 33c

BILGORE'S FLORIDA Orange Juice 46-oz. can 29c

DIPLOMAT Chicken Noodle Soup 13 1/2-oz. can 2 for 35c

DIPLOMAT CHICKEN Tomato Soup 13 1/2-oz. can 2 for 35c

Prune Juice 17-oz. jar 33c

Checker Tomatoes #2 can 23c

Applesauce 17-oz. jar 2 for 31c

ESSEX WHOLE Kernel Corn 17-oz. can 2 for 29c

SUNSHINE Krispy Crackers #1 pkg. 29c

SUNSHINE Creez-It 6-oz. pkg. 2 for 35c

**FRESH ROASTED COFFEE**

UNIVERSAL COFFEE 79c lb.

GLOBE COFFEE 77c lb.

**Frozen Foods**

BIRD EYE Cod Fillet 1-lb. pkg. 39c

HIGH LINER Haddock Fillet 12-oz. pkg. 29c

BIRDS EYE Perch Fillet 1-lb. pkg. 45c

FRESHLY FRIED FILLET OF Flounder Heat & Serve 8-oz. pkg. 19c

FLAMINGO Orange Juice 6-oz. can 19c

**UNIVERSAL for LOW COST MEATS TOP GRADE POULTRY**

FANCY MAPLECREST HEN TURKEYS 1-lb. 59c (Tender - Full Breasted)

FANCY JERSEY PORK LOINS rib end 1-lb. 39c

U. S. CHOICE PRIME SIRLOIN STEAKS 1-lb. 89c

FRESH KILLED FRYERS and BROILERS 1-lb. 43c

**Dairy Foods**

Kraft Velveeta Cheese 2-lb. box 99c

Globe Selected Large White Eggs doz 63c

Universal Extra Large Grade A Eggs doz 67c

Shelf Cured Cheddar Cheese White or Colored 1-lb. 79c

FLAG BRAND Holland Process Edam Cheese 6 portions to a pkg. 29c

Vita Sliced Lunch Herring 16-oz. jar 37c

Sante Cream Cheese 3-oz. pkgs. 29

**Fruits & Vegetables**

BOSTON MACKEREL 1-lb. 25c

FRESH SLICED COD STEAKS 1-lb. 29c

LARGE CANADIAN SMELTS 1-lb. 29c

**Delicious Seafood**

FANCY LAYER PACKED FIGS 6-oz. pkg. 2 for 15c

FANCY STRAWBERRY RHUBARB 1-lb. 19c

**1c SALE**

8 Tender Leaf TEA BALLS ONLY 1c... when you buy 16 at regular price.

24 TEA BALLS FOR ONLY 22c

**WE HAVE A "HONEY" OF A NEW CEREAL**

POST'S SUGAR CRISP 6-oz. pkg. 14c

**SPECIAL!!**

We Carry a Full Line of DIETETIC FRUITS AND VEGETABLES

**GREEN GIANT BRAND PEAS**

VITAMIN C GREEN GIANT ON THE LABEL

2 8-oz. cans 25c 19c



## Belleville Men in Service

Dieter Zimmermann, son of Mr. and Mrs. Herbert Zimmermann, Parsippany, formerly of Belleville, has enlisted in the Navy and is stationed in Newport, Rhode Island. Dieter attended Public School Number 10, Belleville High School, and Bloomfield Tech. A graduate of Bloomfield High School, he was employed by Cardinal Trucking Corporation of Whippany, before entering the service.

Lieutenant Junior Grade Ernest C. Reock Jr., United States Naval Reserve, son of Dr. and Mrs. Ernest C. Reock, 367 Washington Avenue, has been recalled to active duty and left Saturday night for San Diego, California.

A graduate of Belleville High School, Lieutenant Reock attended Rutgers University, and Swarthmore College under the V-12 Program during World War II. He was commissioned as an ensign at Columbia University and later served in Key West, Florida. He received his Master's degree from Rutgers and was employed by the university as Associate Director of Government Research.

Charles Zimmer, 21, son of Mr. and Mrs. C. Zimmer of 69 Baldwin Place, recently enlisted in the Navy and is now stationed in Newport, Rhode Island, for basic training. He is a graduate of Belleville High School, and was with Clark-Dodge, New York brokerage firm, for two-and-a-half years prior to his enlistment.

Robert Edwards, son of Mr. and Mrs. Clement Edwards of 345 Main Street, enlisted in the Marines and left Monday, February 18, for boot training at Parris Island, South Carolina. He attended Belleville High School and Essex County Vocational School.

Private Edward's brother, Clement Edwards Jr., is stationed at Mead, Nebraska as a radio operator for the Army Air Corps.

John C. Gilbert, son of Mr. and Mrs. Casper G. Gilbert of 6 Convent Avenue, was inducted into the Army Friday morning at Perth Amboy. A Belleville High School graduate, he was a member of the high school orchestra and band. Private Gilbert was formerly employed with the Atlantic and Pacific Tea Company, Belleville.

William T. Bocim, aviation chief machinist's mate, USN, husband of the former Katherine Simpson of 199 DeWitt Avenue, is a member of the staff of Carrier Air Group 102, based at the U. S. Naval Air Station, San Diego, Calif.

Carrier Air Group 102 is composed entirely of Naval Reserve squadrons ordered to active duty during the present emergency. Fighter and attack squadrons of the group are engaged in intensified training in order to keep personnel abreast of the latest developments in naval aviation and prepare them for assignment to an aircraft carrier.

## State Police Examination Scheduled For March 3

A written competitive examination for approximately 30 vacancies in the Division of State Police will be held March 3, Superintendent Charles H. Schoeffel announced recently. The test, open to all young men between the ages of 22 and 35, will be held at the National Guard Armory, Paterson; the Naval Militia Armory, Camden; and the Field Artillery Armory, Eggers Crossing, Lawrenceville, commencing at 10 a.m. Veterans of World War II will receive preference.

Detailed information as to qualifications and requirements may be obtained from any State Police Station or by writing the Personnel Section, State Police Headquarters, Trenton 7, N. J.

## Campus

Miss Phyllis J. Smith, Essex County Hospital, Belleville, N. J., a student at the Boston University college of physical education for women, is co-chairman and dance director of the Freshman Show, "Riot in Rhythm," to be presented Saturday evening, March 3, in the college gymnasium.

Edgar A. Bergmiller, of 278 DeWitt Avenue, Belleville, N. J., has been elected treasurer of Lambda Chi Alpha, national social fraternity at Lehigh University.

Miss Marie Lampman, daughter of Mr. and Mrs. J. K. Lampman, 75 Tappan Avenue, a Senior at Montclair State Teachers College, and student teacher in School No. 5, has received a high scholastic record for the first semester and is on the Dean's List. A graduate of Belleville High School, Miss Lampman is a member of the Rohic Club, College honor society.

William Alan King, son of Mr. and Mrs. William King of 38 Malone Avenue, Belleville, was inducted into the Theta Chi fraternity at Rutgers University last weekend as part of the second annual Greek Week celebration of the 22 Greek letter fraternities, chapters at the State University.

A graduate of Belleville High School, Mr. King is a freshman at the University. He is majoring in mathematics.

Students teaching in Belleville schools include: John D. Adams of Upper Montclair, Business Education major; Eleanor Bill, Glen Ridge, French major; Frieda Delcos of Nutley, Social Studies major; Paul Grammar of Montclair, Music major; Marie Lampman, of 75 Tappan Avenue, majoring in Social Studies and teaching at School Number 5; Edward Tarabochia, North Arlington, Science major; and Marie Zarbo of 15 Fairway Avenue, majoring in English.

Approximately 230 Montclair

## CATHOLIC CHARITY PROGRAM CITED

Archdiocesan Report Reveals Charitable Work Here For Less Fortunate

The report of Associated Catholic Charities and its work in behalf of residents of the town of Belleville, issued by the Archdiocesan Roman Catholic Charities, shows that 49 needy families comprising 66 adults and 90 children were aided. In this group of Belleville residents were 26 grave welfare and domestic problems, 5 unweaned, 5 aged, 5 adult delinquency problems, and 1 special service.

For Belleville residents, Catholic Charities continued or procured institutional care in hospitals or convalescent homes for two people for 64 days' care, for 5 aged persons 1,781 days' care or a total of 7 persons for 1,845 institutional days' care.

There were 43 Belleville families consisting of 68 adults and 71 children assisted as follows: 18 families were concerned with problems of placement of children out of their homes; 1 supervision of a juvenile delinquent in their own homes; 10 investigations and supervision of "Adoption Homes"; 14 investigations and supervision of "Foster Homes."

Catholic Children's Aid for Belleville children procured institutional or foster care in our child caring homes for 14 children for 3,514 days' care, 1 person at a training school for 345 correctional days' care, "Boarding Homes" for 6 children for 1,010 days' care. Adoption homes for 5 children for 1,396 days' care. Hospital care for 1 child, 365 days, a total of 27 Belleville children taken good care of for 6,650 days' care.

The all inclusive program for relief called Catholic Charities include 9 hospitals, 15 child caring institutions, 8 specialized institutions. The agencies operating under the names of Associated Catholic Charities consist of the N. J. Catholic Hospital Association, Mount Carmel Guild, Catholic Charities, Catholic Health Services, and Catholic Youth Organization.

Catholic churches of which residents of Belleville are parishioners comprises Immaculate Conception Church, Newark, which takes in one-half of Belleville for Italian people, Holy Family, Nutley, for Italian people of Belleville, has the other half. St. Valentine's of Bloomfield, takes care of Polish families, and Our Lady of Mt. Carmel Church, Nutley, St. Anthony's in the Silver Lake section of Belleville, also come under the Belleville Catholic Charities.

State Teachers College seniors have begun practice teaching in schools throughout the State, according to Dr. M. G. Fraser, head of the Integration Department at the college. Of this number 13 are graduate students.

## WILLIAM ALLEN DIES IN FLORIDA

New York Engineering and Supply Company President Succumbs February 21

Funeral services for William Allen Jr. of 340 DeWitt Avenue, were held Sunday night in the Irving Funeral Home, 276 Washington Avenue. Reverend Charles Mead of First Presbyterian and Trinity Church, South Orange, officiated, after which, St. John's Lodge conducted Masonic services. Interment took place in East Ridgewood Cemetery, Delaware. Mr. Allen died suddenly in Broward General Hospital, Fort Lauderdale, Florida, on Wednesday, February 21. He left his home about a month ago to vacation at the resort.

President of the Mack Engineering and Supply Company, New York for 25 years, he had been associated with the firm since 1923. Mr. Allen was a graduate of Brooklyn Polytechnic Institute and had been a resident of Belleville since 1925. He was born in Scotland 57 years ago and came to this country in 1917. A member of St. John's Lodge No. 1, F. & A. M. of Newark, the Forest Hill Field Club, Bloomfield, the New Jersey Consistory 32, Salaam Temple of Newark, and the Spring Lake Golf and Country Club, Mr. Allen was also a veteran of World War I.

He leaves his wife, Mrs. Florence Bell Allen; a son, William L. Allen of East Orange; a daughter, Miss Alicia Allen, at home; two sisters, Mrs. Jessie Robertson of Lake Worth, Florida, and Mrs. Isabella Walker of Bloomfield; and a brother, George Allen of Arlington, Massachusetts.

## St. Peter's Church Holds Cana Conference Sunday

The Fourth Cana Conference was held Sunday at 2:30 in the New Building of St. Peter's Parish. Rev. Francis Ignacius presided. The following couples attended:

Mr. and Mrs. John Connelly, Mr. and Mrs. Alanson Conklin, Mr. and Mrs. John Holland, Mr. and Mrs. Mickey Canning, Mr. and Mrs. Jim Cunningham, Mrs. and Mrs. Lewis Fink, Mr. and Mrs. Walter Denman, Mr. and Mrs. John Vallance, Mr. and Mrs. Michael Dacey, and Mr. and Mrs. Rudy Garbey.

Also Mr. and Mrs. Ray Stickle, Mr. and Mrs. John Cough, Mr. and Mrs. Jim Naso, Mr. and Mrs. John Cueman, Mr. and Mrs. Jack Kiernan.

Mr. and Mrs. Edward Weber, Mr. and Mrs. William O'Neill, Mr. and Mrs. William Long, Mr. and Mrs. Gene Kelly, and Mr. and Mrs. Raymond Michaud.

## STUDENTS SPEAK AT ROTARY CLUB

Current Topics Delivered By High School Group To Service Club

Four high school students, delivering addresses on current topics, were guests of the Belleville Rotary Club recently. Introduced by high school faculty instructor Raymond Smith, chairman of social studies, the students and their topics were:

Barbara Van Houten, "The Voice of America," Ann Titchard, "Is Big Business Bad?," James Cameron, "The Russian Air Force" and Ronald Kraus, "Controlling Subversive Activities in Communities."

Rotarian Larry Keenan expressed the club's appreciation to the four students, commending them for the planning and thought evidenced in the preparation.

## Services For Frederick E. Everman Held In Kearny

The funeral of Frederick E. Everman of 365 Main Street was held Monday morning from the John D. Crane and Sons' Funeral Home, 241 Kearny Avenue, Kearny. Reverend John A. Struyk of Belleville Reformed Church officiated at the services held in the home. Burial was in Mendham Cemetery.

Mr. Everman died Thursday in his home at the age of 62. Born in Hibernia, he moved to Belleville from Kearny 30 years ago. Employed as a gate-tender at the Erie Railroad, he had formerly been a painter. Mr. Everman was a member of the Union of Painters and Decorators, Local 303, in Kearny, and the Brotherhood of Railroad Trainmen.

He is survived by his wife, Mrs. Barbara Stadel Everman, and a half-sister, Mrs. Dora Deslaurer of Mendham.

## ADVERTISEMENT

BOARD OF EDUCATION  
BELLEVILLE, NEW JERSEY  
NOTICE TO BIDDERS

Public notice is hereby given that the Board of Education of the Town of Belleville, New Jersey, will meet at its office at School No. 8, located at 183 Union Avenue, Belleville, New Jersey, on March 19, 1951 at the hour of 8:15 P.M. Prevaling Time, and there will receive and open sealed proposals for:

PLAYGROUND SURFACING, INCLUDING CONCRETE RETAINING WALLS, WIRE FENCES AND DRAINAGE. At School No. 10 located at Belleville and Franklin Avenues, Belleville, N. J.

Proposals will be received for the entire work under one contract.

Terms of proposals and Sealed bids are fixed by the Specifications, Drawings and specifications, are obtainable at the office of Behe & Kugler, Architects, 27 Washington Street, Newark 2, New Jersey, upon deposit of a Certified Check, in the amount of \$10.00, which will be refunded if a proposal is submitted in accordance with the requirements.

The Board reserves the right to accept or reject any or all proposals, to waive informality and to award contracts for the whole or any part thereof at its discretion.

By the order of the Board of Education of the Town of Belleville in the County of Essex:

RUEL E. DANIELS,  
District Clerk.  
Fee: \$1.50

## BELLEVILLE PROPOSALS

Sealed proposals will be received by the Board of Commissioners of the Town of Belleville at its Meeting Place in the Town Hall, Belleville, N. J., on Tuesday, March 13, 1951, at 8 P.M. Eastern Standard Time, for the construction of 10' water main together with necessary appurtenances from the existing 12" cast iron water main in the west side of Main Street at Mill Street, easterly across Main Street and into the right of way, according to plans and specifications on file in the Office of Department of Public Works, Belleville, N. J.

Proposals are to be submitted according to the requirements of the specifications which will be furnished by the Department of Public Works and will be delivered to the Town Clerk on or before 8 P.M. Eastern Standard Time on March 13, 1951, at the Town Hall, Belleville, N. J. No bids will be received after that time. The Town reserves the right to reject any and all bids.

FLORENCE R. MOREY,  
Town Clerk.  
Fee: \$3.00

## TOWN ORDINANCE

PUBLIC NOTICE is hereby given that the following proposed ordinance was introduced and passed on first reading at a meeting of the Board of Commissioners of the Town of Belleville, held Tuesday evening, February 27, 1951, and further notice is hereby given that the second and third reading of said ordinance will be held at the Town Hall, Washington Avenue, Belleville, New Jersey, on Tuesday, March 13, 1951 at eight o'clock P.M. when all objections to the passing of the same will be heard and considered.

FLORENCE R. MOREY,  
Town Clerk.

to be held at the Town Hall, Washington Avenue and Belleville Avenue, Tuesday evening, March 13, 1951 at eight o'clock P.M. when all objections to the passing of the same will be heard and considered.

FLORENCE R. MOREY,  
Town Clerk.

AN ORDINANCE CREATING THE POSITION OF SPECIAL ACTIVITIES SUPERVISOR, RECREATION, PART TIME.

The Board of Commissioners of the Town of Belleville, in the County of Essex, do hereby:

Section 1. That the position of Special Activities Supervisor, Recreation, part time, be created in the Department of Parks and Public Property at a salary of \$1,000 a year.

Section 2. That the schedule of positions in the Department of Parks and Public Property set forth in "An Ordinance Pertaining to Civil Service Titles and Salary Ranges," adopted April 27, 1949, be amended by adding the position of Special Activities Supervisor, Recreation, part time, unclassified.

Section 3. That this ordinance shall take effect immediately upon final passage and publication in accordance with law.

Fee: \$5.00

## SURROGATE'S NOTICE

ESTATE OF GEORGE A. ST. JOHN, deceased.

Notice of Settlement  
The undersigned, Administrator of the estate of GEORGE A. ST. JOHN, deceased, will be audited and stated by the Surrogate and reported for settlement to the Essex County Court, Probate Division, on Tuesday, the 27th day of March next.

Dated: February 13, 1951.

ARTHUR A. WERTHMAN, Attorney.  
24 Union Avenue  
Livingston 11, N. J.  
Fee: \$8.00

## TOWN ORDINANCE

PUBLIC NOTICE is hereby given that the following proposed ordinance was introduced and passed on first reading at a meeting of the Board of Commissioners of the Town of Belleville, held Tuesday evening, February 27, 1951, and further notice is hereby given that the second and third reading of said ordinance will be held at the Town Hall, Washington Avenue, Belleville, New Jersey, on Tuesday, March 13, 1951 at eight o'clock P.M. when all objections to the passing of the same will be heard and considered.

FLORENCE R. MOREY,  
Town Clerk.

## TOWN ORDINANCE

PUBLIC NOTICE is hereby given that the following proposed ordinance was introduced and passed on first reading at a meeting of the Board of Commissioners of the Town of Belleville, held Tuesday evening, February 27, 1951, and further notice is hereby given that the second and third reading of said ordinance will be held at the Town Hall, Washington Avenue, Belleville, New Jersey, on Tuesday, March 13, 1951 at eight o'clock P.M. when all objections to the passing of the same will be heard and considered.

FLORENCE R. MOREY,  
Town Clerk.

struction and ramp at south end of stadium, and it is necessary that the following work at the Municipal Stadium, Belleville: Reconstruction of existing track, new construction of additional track, wooden track curbing, wooden steps, wooden track curbing, wooden construction and ramp at south end of stadium.

Section 1. That the additional sum of \$1,500, be appropriated to complete the following work at the Municipal Stadium, Belleville: Reconstruction of existing track, new construction of additional track, wooden track curbing, wooden steps, wooden track curbing, wooden construction and ramp at south end of stadium.

Section 2. It is hereby determined and declared that it is necessary that the Town of Belleville, in the County of Essex, shall raise money for the purpose of work to be done at the Municipal Stadium described above, and that the estimated amount of additional money necessary to be raised from all sources for said purpose is \$1,500.00, and that the estimated minimum amount of interest necessary to be issued for said purpose is \$1,425.00.

Section 3. To finance said purpose there shall be issued, pursuant to the Local Bond Act of the State of New Jersey, in anticipation of the issuance of bonds, bonds of the Town of Belleville, New Jersey, which shall not exceed in aggregate principal amount the sum of \$1,425. Said notes shall bear interest at a rate which shall not exceed six per centum (6%) per annum, and may be renewed from time to time pursuant to and within the limitations prescribed by said Act. All matters with respect to said notes and determined by this ordinance shall be determined by resolutions to be hereafter adopted.

Section 4. To finance said purpose there shall be issued, pursuant to the Local Bond Act of the State of New Jersey, in anticipation of the issuance of bonds, bonds of the Town of Belleville, New Jersey, which shall not exceed in aggregate principal amount the sum of \$1,425. Said notes shall bear interest at a rate which shall not exceed six per centum (6%) per annum, and may be renewed from time to time pursuant to and within the limitations prescribed by said Act. All matters with respect to said notes and determined by this ordinance shall be determined by resolutions to be hereafter adopted.

Section 5. Not more than \$500.00 of the sum to be raised by the issuance of said notes may be used to finance interest on obligations issued to finance said purpose, whether temporary or permanent, or to finance engineering or inspection costs and legal expenses, or to finance the cost of issuance of such obligations as provided in Section 1-55 of Revised Statutes of New Jersey.

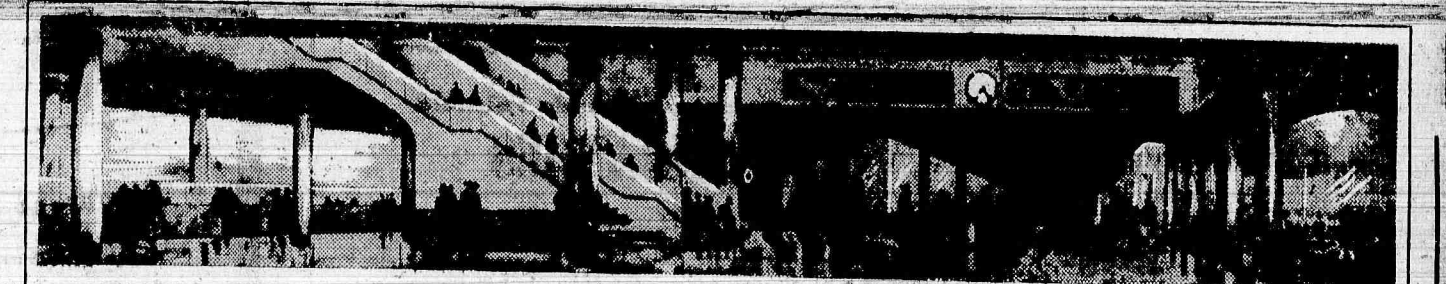
Section 6. It is hereby determined and declared that the period of usefulness of the purpose for the financing of which said notes are to be issued is a period of fifteen years computed from the date of said bonds.

Section 7. No part of the cost of making said improvement has been or is to be specially assessed against property specially benefited thereby.

Section 8. It is hereby determined and declared that the Supplemental Debt Statement required by said Local Bond Law has been duly made and filed in the Office of the Town Clerk of said Town, and that such statement so filed shows that the Town of Belleville, New Jersey, as defined in Section 40:1-5 of said Local Bond Law, is increased by this ordinance by \$1,425, and that the obligations authorized by this ordinance will be within all debt limitations prescribed by said Local Bond Law.

Section 9. This ordinance shall take effect twenty days after the first publication thereof after final passage.

Fee: \$15.00



MAIN CONCOURSE IN THE NEW PORT AUTHORITY BUS TERMINAL.

# NOW DeCAMP PASSENGERS

Enjoy the World's Finest Terminal Facilities

Near the heart of New York City—within easy reach of business, shopping and amusement centers—connections with all subways.

Never have passengers on any transportation system been given so many conveniences—such complete opportunities for last minute shopping—such modern facilities to refresh themselves and their costumes—such pleasant surroundings for dining or for waiting. De CAMP BUS LINES give you all this, plus quicker and more comfortable service than ever before, in and out of New York—the great New Port Authority Bus Terminal has actually cut bus schedules up to twenty minutes!

## Some of the many convenient Shops and Services

|                |                                      |                            |
|----------------|--------------------------------------|----------------------------|
| Baggage Room   | Hosiery Shop                         | Restaurants                |
| Bake Shop      | Information Center                   | Shoeshine Parlor           |
| Barber Shop    | Laundry Service                      | Shoe Repair & Hat Cleaning |
| Book Store     | Linens & Infant Wear                 | Snack Bar                  |
| Bowling Alleys | Men's Wear Shop                      | Stationery Store           |
| Candy Shop     | Music, Phonograph & Radio Shop       | Taxi Stands                |
| Cutlery Store  | Newstands                            | Telephones                 |
| Dentist        | Novelty Shop                         | Toy Store                  |
| Dry Cleaner    | Parcel Checking Lockers              | Travel Bureau              |
| Drugstore      | Physician                            | Valet Service              |
| Florist        | Print Shop                           | Women's Wear Shop          |
| Food Stores    | Rest Rooms, Dressing Rooms & Showers |                            |

NOTE: DeCAMP BUSES leave from PLATFORM 73

# DeCAMP BUS LINES

LIVINGSTON, NEW JERSEY

FOR TIMETABLE INFORMATION  
TELEPHONE

ORange 5-8660

NEW YORK PORT AUTHORITY TERMINAL

Eighth Avenue & 41st Street

Longacre 4-8484



SERVING NEW JERSEY RESIDENTS SINCE 1870

THE SUBURBAN CONCOURSE IS LINED WITH A WIDE VARIETY OF SMART SHOPS

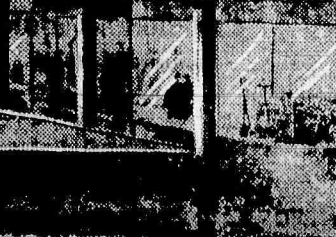


DINING FACILITIES

SUBWAY

WAITING ROOMS

FOR YOUR CONVENIENCE



## HANNAN'S Little PLUMBER



YOU'LL SEND FOR US IF YOU ARE WISE, AND IF YOU WOULD

## ECONOMIZE

James HANNAN, Jr.  
PLUMBING & HEATING  
Belleville 2-3759 • BELLEVILLE 2-3857  
48 Wilson Place

## Spring's Greatest Spectacle!

GRAND CENTRAL PALACE - NEW YORK CITY

35TH INTERNATIONAL

## FLOWER SHOW

6 DAYS ONLY

MARCH 5-10

OPENS NOON MONDAY - THEREAFTER 10:00 A. M.

TO 10:30 P. M. • ADMISSION \$1.50 • CHILDREN 75¢

(TAX INCLUDED)

362 WASHINGTON AVE. • BELLEVILLE •

PHONE - BELLEVILLE 2-1097

NOW PLAYING

'For Heaven's Sake' 'Walk Softly Stranger'

Friday, Saturday, Sunday, Monday, March 2-3-4-5

2-BIG HITS-2

WARNER BROS.

COOPER ROMAN

COCHRAN

MAJOR HITS

TARZAN AND THE SLAVE GIRL

STUART HEISLER

MAJOR HITS

Tuesday, Wednesday, Thursday, March 6-7-8

Joan FONTAINE Robert RYAN

Zachary SCOTT

'BORN TO BE BAD' 'HIT PARADE OF 1951'

JOHN CARROLL MARIE MACDONALD

ALWAYS KNOWN  
For Better Quality  
FINE WINES AND LIQUORS

## SIMON

Wine and Liquor Store

547 Washington Ave.

Belleville

Phone Belleville 2-4321

Phone Belleville 2-4321

Phone Belleville 2-4321

Phone Belleville 2-4321

Phone Belleville 2-4321

Phone Belleville 2-4321

Phone Belleville 2-4321

Phone Belleville 2-4321

Phone Belleville 2-4321

Phone Belleville 2-4321

Phone Belleville 2-4321





**Eight O'Clock** lb. 77c  
**Red Circle** lb. 79c  
**Bokar** lb. 81c

**Lux Flakes**  
 For your finest fabrics  
 large pkg. 32c

**Lux Toilet Soap**  
 For toilet and bath  
 regular cake 9c

**Swan Soap**  
 For dishes, laundry or bath  
 2 medium cakes 19c

**Swan Soap**  
 For dishes, laundry or bath  
 2 large cakes 31c

**Rinso**  
 For the laundry and dishes  
 large pkg. 32c

**Silver Dust**  
 Granulated white soap  
 large pkg. 33c

**Woodbury's Soap**  
 For toilet and bath  
 regular cake 9c 2 large cakes 25c

**Sweetheart Soap**  
 For toilet and bath  
 regular cake 9c

**Blu-White Flakes**  
 Blues while you work  
 2 2 1/2 oz. pkgs. 17c

**Chiffon Flakes**  
 For dishes, lingerie, etc.  
 large pkg. 32c

**Broadcast**  
 Corned Beef Hash  
 1 lb. can 37c

**Kirkman's**  
 Borax Soap  
 For the laundry 3 bars 25c

**Kirkman's Flakes**  
 For dishes and fine fabrics  
 large pkg. 32c

**Super Suds**  
 For dishes and duds  
 large pkg. 32c

**Colgate's Vel**  
 For silks, rayons, nylons, dishes, etc.  
 large pkg. 32c

**Colgate's Fab**  
 For the family wash and dishes  
 large pkg. 32c

**Palmolive Soap**  
 For toilet and bath  
 regular cake 9c

**Cashmere Bouquet**  
 Perfumed toilet soap  
 2 regular cakes 19c



## Customers' Corner

Not everybody has the same shopping problems.

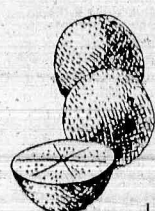
That is why it's so helpful to us when we hear from all the different kinds of people who shop at A&P.

Many thousands of men and women in all walks of life have written to the Customer Relations Department expressing their opinions of A&P stores, food and service.

We're pleased to learn that we have so many satisfied customers. And we're pleased, too, that we have received so many worthwhile suggestions for making A&P a better place to shop.

Remember, our loyal employees always give your comments their most earnest consideration. Please write:

CUSTOMER RELATIONS DEPT.  
 A&P Food Stores  
 420 Lexington Ave., New York 17, N. Y.



New Crop Florida Valencia

## ORANGES

5 lb. 39c

U. S. No. 1 grade—sweet, full of juice!

|                |                               |                     |
|----------------|-------------------------------|---------------------|
| Strawberries   | Florida                       | half box 29c        |
| String Beans   | Florida                       | lb. 17c             |
| Fresh Peas     | Western                       | lb. 15c             |
| Carrots        | Western                       | bunch 12c           |
| Table Celery   | White or Pascal               | stalk 15c           |
| Grapefruit     | U. S. No. 1 grade—medium size | 3 for 20c           |
| Anjou Pears    | Extra fancy                   | lb. 13c             |
| Maine Potatoes | U. S. No. 1 grade A size      | 10 lb. bag 37c      |
| Sweet Potatoes | U. S. No. 1 grade             | lb. 7c              |
| Pistachio Nuts | Regalo                        | 6 oz. cello bag 37c |

## Shelled Nuts

|                        |        |                     |
|------------------------|--------|---------------------|
| Almond Nut Meats       | Regalo | 6 oz. cello bag 35c |
| Mixed Salted Nut Meats | Regalo | 6 oz. cello bag 45c |
| Pecan Nut Meats        | Regalo | 6 oz. cello bag 55c |
| Walnut Nut Meats       | Regalo | 6 oz. cello bag 49c |
| Cashew Nut Meats       | Aster  | 8 oz. cello bag 31c |



## MARVEL BREAD

1-lb. Loaf 15c

Dated Fresh Daily!

## Jane Parker Treats!

|                   |                     |                |
|-------------------|---------------------|----------------|
| Sliced Rye        | With caraway seeds  | loaf 17c       |
| Donuts            | Cinnamon or sugared | pkg. of 12 23c |
| Hot Cross Buns    |                     | pkg. of 10 35c |
| Apple Pie         |                     | each 55c       |
| Turnovers         | Apple or Cherry     | pkg. of 3 25c  |
| Crumb Square      |                     | each 39c       |
| English Muffins   |                     | pkg. of 6 20c  |
| Blueberry Muffins |                     | pkg. of 6 31c  |
| Dundee Cake       |                     | whole size 98c |

## CANDY VALUES

|                        |                   |                |
|------------------------|-------------------|----------------|
| Warwick Thin Mints     | Chocolate covered | 1 lb. box 39c  |
| Choc. Covered Cherries | Warwick           | 1 lb. box 53c  |
| Bassett's Licorice     | All sorts         | 8 oz. pkg. 19c |
| Caramel Pecan Delights | Warwick           | 8 oz. pkg. 43c |

## 16 Pages That Shed Light on MAKING LAMP SHADES

See how easily a lovely lamp shade can be made with the help of the 16-page super-article in this issue of Woman's Day! It's fully illustrated with step-by-step directions.

March WOMAN'S DAY 5c at A&P

In Days Like These You'll Be Glad To Know...

# A&P Actually

# Triples

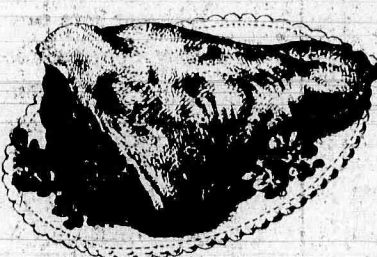
# Your Opportunities To SAVE!



There are more than 300 shopping days in the year, but an average of only 104 Fridays and Saturdays. So by offering you savings every day, instead of savings on week-ends only . . . A&P triples your opportunities to save money.

And here's something else you'll be glad to know: A&P guarantees all advertised prices (including those not subject to price ceilings) for a full week, even though market prices go up. Result? You can shop at A&P any day you choose . . . and save every day you shop. Why not start today?

**All prices shown here, not merely grocery prices, are guaranteed—Thursday, March 1st through Wednesday, March 7th.**



An Outstanding Value! Tender and Flavorful!

## "SUPER-RIGHT" Leg of Lamb

lb. 69c

Now is the time to enjoy lamb, and A&P is the place to get one of the tenderest, finest-tasting legs of lamb you ever ate . . . at a mighty attractive price. Serve it soon!

|                       |  |         |
|-----------------------|--|---------|
| Chickens              | Breasting and Frying—sized 2 1/2 to 3 1/2 lbs. | lb. 45c |
| Ducks                 | Long Island's finest                           | lb. 41c |
| Pork Chops            | Hip and shoulder cuts                          | lb. 43c |
| Loin Pork Chops       | Center cuts                                    | lb. 73c |
| Chopped Beef          | Freshly ground                                 | lb. 65c |
| Plate and Navel Beef  | Fresh for boiling                              | lb. 37c |
| Boneless Brisket Beef | Fresh or corned                                | lb. 89c |
| Corned Beef           | Plate and navel                                | lb. 39c |
| Boneless Soup Beef    |  | lb. 65c |
| Loin Lamb Chops       |  | lb. 99c |
| Shoulders of Lamb     | Cross-cut—whole                                | lb. 53c |
| Sliced Bacon          | Sunnyfield sugar cured                         | lb. 65c |
| Frankfurters          | Skinless                                       | lb. 65c |
| Fresh Hams            | Whole or either half                           | lb. 63c |
| Fresh Spare Ribs      |  | lb. 53c |
| Fresh Pork Shoulders  | Short cut                                      | lb. 47c |
| Leg or Rump of Veal   |  | lb. 79c |

|                       |                           |         |
|-----------------------|---------------------------|---------|
| Ready-To-Eat Hams     | Whole or either half      | lb. 65c |
| Smoked Pork Shoulders | Short cut                 | lb. 49c |
| Pork Sausage          | Link lb. 63c Meat lb. 53c |         |
| Beef Liver            | Specially selected        | lb. 75c |
| Breast of Lamb        |                           | lb. 29c |
| Beef Kidneys          |                           | lb. 29c |
| Stewing Veal          | Boneless                  | lb. 79c |
| Pressed Chopped Ham   |                           | lb. 89c |
| Liverwurst            | Braunschweiger sliced     | lb. 65c |
| Ox tails              | For soup or braising      | lb. 39c |



## FISH & SEAFOOD

|                    |                        |         |
|--------------------|------------------------|---------|
| Swordfish Steaks   |                        | lb. 49c |
| Smelts             | No. 1 size             | lb. 33c |
| Fresh Sea Scallops |                        | lb. 69c |
| Mackerel           | For frying or broiling | lb. 27c |

|                              |                                |                                  |
|------------------------------|--------------------------------|----------------------------------|
| Applesauce                   | A&P                            | 20 oz. can 2 for 29c             |
| Mott's Pom-elts              | Apple dessert                  | 17 oz. jar 22c                   |
| Libby's Fruit Cocktail       | 1/2 oz. can 25c 30 oz. can 39c |                                  |
| Del Monte Stewed Prunes      |                                | 29 oz. jar 35c                   |
| One Pie Blueberries          |                                | 15 oz. can 27c                   |
| Grapefruit Sections          | A&P fancy                      | 15 oz. can 2 for 35c             |
| Freestone Peaches            | Sultana                        | 29 oz. can 37c                   |
| Crushed Pineapple            | All brands                     | 20 oz. can 27c                   |
| Pineapple Chunks             | All brands                     | 20 oz. can 29c                   |
| Sunnyfield Pancake Flour     |                                | 20 oz. pkg. 13c                  |
| Ann Page Syrup               |                                | 12 oz. bot. 25c                  |
| H-O Oats                     | Quick and regular              | 16 oz. pkg. 16c                  |
| Cream of Wheat               |                                | 14 oz. pkg. 19c 28 oz. jar 31c   |
| Kretschmer's Wheat Germ      |                                | 12 oz. jar 29c                   |
| Nescafe                      | Dissolves instantly            | 4 oz. jar 53c 12 oz. 1.53        |
| Bosco                        | Milk Amplifier                 | 12 oz. jar 27c 24 oz. 47c        |
| Sultana Mint Jelly           | With Pectin                    | 12 oz. jar 17c                   |
| Henri Spaghetti Sauce        |                                | 8 oz. tin 15c                    |
| Uncle Ben's Rice             | Converted long grain           | 14 oz. pkg. 20c                  |
| Beardsley's Shredded Codfish |                                | 4 oz. pkg. 18c                   |
| Harris American Crabmeat     |                                | 6 1/2 oz. can 61c                |
| Gorton's Codfish Cakes       | Ready to fry                   | 10 oz. can 21c                   |
| Alaska Pink Salmon           | Cold Stream                    | 1 lb. can 59c                    |
| Medium Red Salmon            | Some Strike                    | 7 1/2 oz. can 41c                |
| Del Monte Sardines           | In tomato sauce                | 15 oz. can 21c                   |
| White Meat Tuna Fish         | Chicken of Sea                 | 7 oz. can 43c                    |
| V-8 Vegetable Juice          |                                | 12 oz. can 12c                   |
| Heinz Baked Beans            |                                | 7 oz. can 9c 1 lb. can 2 for 29c |
| Heinz Soup                   | Cream of Tomato                | can 10c                          |
| Sweet Potatoes               | A&P                            | 18 oz. can 23c                   |
| Angel Soft Facial Tissues    |                                | pkg. of 400 25c                  |
| Bright Sail Floor Wax        |                                | 1 lb. can 35c                    |
| Scouring Pads                | Bright Sail soap filled        | pkg. of 12 18c                   |
| Sweetheart Soap              | Bath size cake                 | 2 for 25c                        |
| Lux Toilet Soap              | Bath size cake                 | 2 for 25c                        |
| Lifebuoy Soap                | Bath size cake                 | 2 for 25c                        |



## Ann Page Food Values

Discover that five foods needn't be expensive by trying Ann Page Foods.

|                       |               |                         |
|-----------------------|---------------|-------------------------|
| Macaroni or Spaghetti |               | 1 lb. pkg. 17c          |
| Egg Noodles           |               | 1 lb. pkg. 27c          |
| Prepared Spaghetti    |               | 1 1/2 oz. can 2 for 25c |
| Peanut Butter         | Creamy smooth | 12 oz. jar 32c          |

## ROMANO CHEESE

Domestic lb. 89c

Perfect for Grating!

|                        |   |                |
|------------------------|---|----------------|
| Sharp Cheddar          | Carefully cured                               | lb. 65c        |
| Imported Swiss         | Switzerland                                   | 1/2 lb. 55c    |
| Imported Romano        | For grating                                   | 1/2 lb. 58c    |
| Imported Bleu          | Danish  | lb. 59c        |
| Baby Goudas            |   | each 49c       |
| Ched-O-Bit Cheese Food |   | 8 oz. pkg. 29c |
| Velveeta Cheese Food   |   | 8 oz. pkg. 37c |
| Cream Cheese           | Breakstone                                    | 4 oz. pkg. 21c |
| Kay Natural Cheddar    |   | 8 oz. pkg. 35c |
| Gold 'N Rich           | A dessert cheese                              | lb. 75c        |
| Fresh Milk             | Homog. 2 qt. conls. 47c Reg. 2 qt. conls. 45c |                |

## Frozen Foods

|                       |                         |                       |
|-----------------------|-------------------------|-----------------------|
| Blended Juice         | Minute Maid             | 6 oz. can 2 for 35c   |
| Green Peas            | Libby                   | 12 oz. pkg. 2 for 43c |
| Corn on Cob           | Libby—package of 2 ears | 2 pkgs. 45c           |
| French Fried Potatoes | Birds-eye               | 10 oz. pkg. 22c       |
| Ocean Perch Fillet    | Cap'n John              | 1 lb. pkg. 47c        |

## A&P's PRICE POLICY

- Storewide low prices on hundreds of items every day . . . instead of just a few "one-day" or "week-end" specials.
- All advertised prices (including those of items not subject to price ceilings) are guaranteed for one week, even though market prices go up.

We believe this policy helps our customers save more money.

- With the correct price marked on every item, plus an itemized cash register slip . . . you know what you save at A&P.

STORE HOURS  
 8 A.M. to 6 P.M.  
 Mon. thru Sat.

Copyright 1951—  
 The Great Atlantic  
 and Pacific Tea Co.

# A&P Super Markets

Prices Effective in Super Markets and Self-Service Stores Only.



# YOU'LL SAVE at ACME'S MARCH of VALUES!



## MEATS

Get acquainted with Acme's top-quality meats today!

**Pork Loins** (Rib End) lb. **43c**  
(Whole or Loin End) lb. 49c

**Chuck Roast** or Steak lb. **63c**  
Bone in. Economical, easily prepared! At all Acme's!

**Smoked Hams** (Shank Half) lb. **59c**  
(Whole or Butt Half) lb. 63c

**Center Cut Pork Chops** lb. 69c  
**Rib Roast of Beef** 7" CUT—1st 6 RIBS lb. 79c  
**Boneless Cross-Rib Pot Roast** lb. 95c  
**Smoked Beef Tongues** lb. 25c  
**Fresh or Corned Plate Beef**

All Prices Effective Thru Wednesday, March 7

## BAKERY

Acme bake goods are rushed oven fresh from our own modern bakery!

**Virginia Lee Brown-&-Serve Sticky Cinnamon Buns** Package of 8 **33c**  
Just pop into your oven for a super treat!

**Iced Cinnamon Buns** VIRGINIA LEE Package of 9 **35c**  
**Louisiana Crunch Ring** VIRGINIA LEE each **39c**  
**Supreme White Bread** large loaf **15c**  
**Brown-N-Serve Hot Cross Buns** Package of 12 **39c**  
**Hot Cross Buns** Package of 9 **15c**

## PRODUCE

**Juicy Florida Oranges** 5-lb. bag **39c**

Today's best orange value! Feature of the week! Freshly bagged!

|                                |           |        |
|--------------------------------|-----------|--------|
| Florida Seedless Grapefruit    | 3 for     | 25c    |
| Eastern Red Delicious Apples   | 3 lbs.    | 25c    |
| Luscious Florida Strawberries  | Pint Box  | 29c    |
| Guaranteed Grass Seed          | 5-lb. bag | \$1.89 |
| Tender Western Carrots         | 2 bunches | 25c    |
| Florida New Red Bliss Potatoes | 3 lbs.    | 19c    |

**U. S. No. 1 MAINE Potatoes** 25-lb. bag **79c**  
**Tomatoes** Fancy Selected Box **25c**

**OPEN FRIDAY UNTIL 9 P. M.**

Tune In! "Bargain Around With Boulton" find music interviews with outstanding personalities, news — 11 A. M. to Noon Monday thru Friday, WPAI—930 on your dial. Featuring such fine products as:

**RONZONI SPAGHETTI**  
**REDDI-WIP**  
**SHEPHERD MILK**  
**WESTON COOKIES**  
**ROYAL CROWN COLA**  
**CAROLINA RICE**  
**KIRKMAN GRANULATED**

**Heinz Baked Beans** 16-oz. can **13c**  
**Heinz Pickles** FRESH CUCUMBER 16-oz. jar **23c**  
**Green Giant Peas** 17-oz. can **17c**

|  |     |   |     |
|--|-----|---|-----|
| Heinz Ketchup 14-oz. bottle                      | 26c | Rock Lobster Deep Blue 5 1/2-oz. can              | 39c |
| Spaghetti HEINZ, in Tom. Sauce 2 15 1/4-oz. cans | 27c | Tuna Fish CHICKEN-OF-THE-SEA Light Meat 7-oz. can | 39c |
| Heinz Soup Condensed Vegetable 2 11-oz. cans     | 25c | Sardines In Oil 3 3 1/4-oz. cans                  | 19c |
| Sun Maid Raisins 15-oz. package                  | 29c | Sauer Kraut IDEAL Fancy 19-oz. can                | 10c |
| Ideal Apple Sauce 16-oz. can                     | 14c | Apple Juice IDEAL Fancy 44-oz. can                | 27c |
| Apple Sauce MUSSELMAN'S 8 1/2-oz. can            | 9c  | Mayonnaise HOM-DE-LITE pint jar                   | 39c |
| Apple Butter IDEAL Fancy 25-oz. jar              | 21c | Split Peas ROBFORD Fancy 16-oz. pkg.              | 11c |
| Ideal Tea Bags package of 30                     | 43c | Mueller's Macaroni Elbow 17-oz. lb. pkg.          | 17c |

**SUGAR** 5-lb. bag **44c** 10-lb. bag **87c**

|  |     |  |     |
|--|-----|--|-----|
| Tomato Juice Libby's 2 18-oz. cans               | 27c | Asco Tomatoes Our Finest 2 12-oz. cans | 21c |
| V-8 Cocktail Vegetable Juice 12-oz. can          | 12c | Stuffed Olives IDEAL 2-oz. jar         | 25c |
| Apricot Nectar Heart's 2 12-oz. cans             | 23c | Gravy Master 1 1/2-oz. bottle          | 15c |
| Orange Drink Nedick's 6-oz. Concentrate can      | 19c | Shredded Wheat NABISCO 12-oz. pkg.     | 18c |
| Fruit Cocktail Del Monte 30-oz. can              | 39c | Nabisco Graham's SUNSHINE 16-oz. pkg.  | 31c |
| Peaches Heart's Delight Yellow Halves 29-oz. can | 37c | Chocolate Nuggets WESTON 7-oz. pkg.    | 27c |
| Del Monte Prunes Stewed 17-oz. jar               | 25c | Banana Patties WESTON 9-oz. pkg.       | 21c |
| Preserves IDEAL Pure Strawberry 12-oz. jar       | 35c | Cocoanut Gems WESTON 9-oz. pkg.        | 27c |

**Heinz Tomato Soup** 11-oz. can **10c**  
**Del Monte Pineapple** SLICED 20-oz. can **25c**  
**Pineapple Juice** DEL MONTE 2 18-oz. cans **27c**

**CANDY DEPT. FEATURES!**

|  |     |  |     |
|--|-----|--|-----|
| Night & Day MIXTURE 8-oz. pkg.           | 19c | Asco Coffee "Heat-flo Roasted" 1-lb. bag | 79c |
| Delson Merri Mints 8-oz. pkg.            | 20c | MEDIUM BLEND. Ground fresh to order.     |     |
| Jelly Eggs Virginia Lee 12-oz. bag       | 19c | Wincrest Coffee 1-lb. bag                | 77c |
| Krispy Krunch LUMMIS 9-oz. can           | 29c | MILD BLEND. Heat-flo roasted.            |     |
| Orange Slices Virginia Lee 4 1/2-oz. can | 19c | Ideal Coffee Vacuum Packed pound can     | 85c |

**ACME COFFEE SERVICE!**  
RICHER BLEND. Vigorous flavor.

**INTRODUCTORY OFFER! SAVE UP TO 25c!**  
Coupon Worth 10c Attached to Each 4-oz. Jar  
**IDEAL Instant Coffee** 4-oz. jar **49c** (39c with Coupon)  
Hurry! Try this sensational new instant coffee during this introductory offer!

|  |     |  |     |
|--|-----|--|-----|
| Coffee Cake Mix HOYT'S 14-oz. pkg.                 | 24c | Cleanser KIRKMAN'S 2 13-oz. cans           | 19c |
| Wilson's MOR Beef 12-oz. can                       | 53c | Soap Powder KIRKMAN'S 40-oz. pkg.          | 26c |
| Wheat Puffs Gold Seal 2 5-oz. pkgs                 | 23c | Soap KIRKMAN'S COMPLEXION 3 cakes          | 22c |
| Crescent Peanuts SALTED 7-oz. can                  | 25c | Sweetheart Soap Regular cake               | 9c  |
| Bosco Chocolate Flavored Milk Amplifier 12-oz. jar | 27c | Sweetheart BATH SOAP 2 cakes               | 25c |
| Welch's Grapeland 16-oz. jar                       | 21c | Blu-White Blues White You Wash 2 3-oz. 17c |     |
| Shoe White WILBERT'S 6-oz. bot.                    | 15c | Woodbury FACIAL SOAP 3 Regular cakes       | 27c |
| Floor Wax WILBERT'S No-Rub 16-oz. bottle           | 35c | Woodbury BATH SOAP 2 Large cakes           | 25c |
| Polish WILBERT'S No-Rub Furniture 12-oz. can       | 17c | FELSO Large Size 18-oz. package            | 32c |

|                                   |     |   |  |     |
|-----------------------------------|-----|---|--|-----|
| Keebler's Saltines 16-oz. package | 29c | Homogenized Spry 1-lb. can 3 1/2-lb. \$1.09 | Doeskin Facial Tissues Package of 400 sheets | 35c |
| Lux Flakes 2 4-oz. packages       | 27c | IVORY SNOW 12 1/2-oz. package               | Lifebuoy Health Soap Regular cake            | 9c  |
| large 12 1/2-oz. package          | 32c | Giant Economy Size 83c                      | Bath Size 2 cakes                            | 25c |

ALL PRICES IN EVERY DEPT. EFFECTIVE THRU WED., MAR. 7

## FROZEN FOODS

**Seabrook Cut or Frenched Green Beans** Special! 10-oz. pkg. **19c**  
Regularly 22c! Each package equals 1 lb. fresh beans.

**Ideal Peas** 12-oz. package **21c** **Birdseye Peas** 12-oz. package **23c**  
**Farmdale Baby Lima Beans** 12-oz. package **19c**  
**Ideal Fordhook Lima Beans** 10-oz. package **27c**  
**Maxson French Fried Potatoes** 9-oz. package **19c**

**Orange Juice** Ideal Concentrated 6-oz. can **19c**  
Get Beautiful Decorated Glass Decanter for Only 19c When You Buy One Can of Ideal Orange Juice at 19c!

**Strawberries** Ideal Whole, 15-oz. pkg. or Seabrook Sliced, 12-oz. pkg. **39c**  
Luscious, finest red ripe strawberries! Regularly 43c. Try them at this special low price!

**Serve Acme Fresh Frosted Fish!**

Be modern! Acme frosted fish is ready cleaned, all food, no waste—so convenient, fits right into your refrigerator freezing unit. Over 15 varieties to choose from! Featured at all Acme's!

**Frosted Perch Fillet** lb. **41c**  
**Tasty Smelts** pkg. **45c**  
**Fan Tail Shrimp** pkg. **69c**

## DAIRY

**Special Prices On Famous Louella Butter!**

**Louella BUTTER** 76c  
Solids, lb. carton **76c** Louella 1/4's lb. carton **77c**  
Get acquainted with Louella—America's greatest prize winning butter at these low prices!

**Richland Butter** Special! lb. Print **75c**

**Sharp White Coon Cheese** N. Y. State lb. **79c**  
**Glendale Club Cheese Food** 2-lb. loaf **99c**  
**American Loaf Cheese** Sliced Colored lb. **57c**  
**Gold-N-Rich** lb. **75c** **Velveeta** KRAFT 8-oz. pkg. **37c**  
**Pabst-ett** Standard 5 1/2-oz. pkg. **27c** **Swiss** Domestic Cheese 1/2-lb. **35c**  
**Snappy** Shefford Cheese, 3-oz. **20c** **Provolone** lb. **59c**

**Buy a Case and Save More!**

**Ideal Pork & Beans** Case of 48 cans \$4.98 dozen **\$1.29 2 16-oz. cans 23c**  
**Farmdale Yellow Cream Corn** Case of 24 cans \$3.29 doz. **\$1.69 2 15 1/2-oz. cans 29c**  
**Farmdale Large Peas** Case of 24 cans \$3.49 dozen **\$1.79 2 17-oz. cans 31c**

**Acme Markets**

Owned and Operated By The American Stores Company

|   |  |   |  |  |  |  |   |
|---|--|---|--|--|--|--|---|
| <b>Lux Toilet Soap</b> Regular cake 9c<br>F. 1st SIZE LUX SOAP 2 cakes <b>25c</b> | <b>Kirkman's Granulated</b> Instant Rich Soups 10-oz. package <b>33c</b><br>With Ladies' Colored Ties! | <b>Kirkman's Borax Soap</b> 3 7-oz. bars <b>25c</b> | <b>Kirkman's Flakes</b> large package <b>32c</b><br>Cup and saucer yours for 4 top of Kirkman premium cereal | <b>Hershey COCOA BUTTER Toilet Soap</b> 5-oz. 1-lb. Tole Pack 4 cakes <b>30c</b> | <b>Swan Soap</b> 2 medium cakes <b>19c</b><br>2 large cakes <b>31c</b> | <b>3 Little Kittens CAT FOOD</b> 3 8-oz. cans <b>25c</b> | <b>3 Little Kittens Cat Food</b> 2 15-oz. cans <b>21c</b> |
|---|--|---|--|--|--|--|---|



**The Belleville Times**  
Published every Thursday by The Belleville News Corporation, Belleville, N. J.  
ADVERTISING, NEWS AND BUSINESS OFFICE  
228 WASHINGTON AVENUE  
Telephone BELleville 2-3206  
RALPH E. HEINZEN, EDITOR AND PUBLISHER

**A Chance to Rally All Republicans**

Two decisions involving the U. S. Constitution, this week, should stimulate Republican leadership to early action in its pronounced determination to unseat the Truman "Fair Deal" administration in 1952 and on a more local level should guide the hand of Clean Government in framing its Primary ticket next week in such a way as to rally the support of all Republicans here and throughout the Essex districts, regardless of Clean Government affiliation.

The enactment of the 22nd Constitutional amendment limiting a President to two elected terms is timely. It is hard to believe that even though the letter of the law excludes present company, President Truman would dare to violate the spirit of the law by seeking a second elected term. Morally, the nation has served notice that it is opposed to the establishment of dynasties in the White House. If he did run again and was elected, Truman would have 12 years as President and that is exactly what the amendment wants to prevent.

The split decision of the United States Supreme Court upsetting Wisconsin's utilities anti-strike law may render cadent New Jersey's own anti-strike statute. The decision, to which Justices Frankfurter, Burton and Minton dissented, was clearly a "Fair Deal" ruling of which Chief Justice Fred Vinson was the principal artisan. Like so much recent Fair Deal legislation and so

many recent Supreme Court decisions, the ruling warps our Constitution to such an extent that it threatens to deprive the states of the last semblance of home rule.

The three dissenting justices opposed the court's decision on the grounds that the Taft-Hartley law apply to relations of labor and management on a national or interstate level, leaving purely intrastate strike emergencies to state legislation. That was the intention when New Jersey wrote the utilities anti-strike statute on its books. It was to prevent strikes in specific utilities within the state that are essential to the public—water, heat, light, power, sanitation, police, transportation and telephones. There was no intention

to prevent strikes on interstate utilities. It is disputable whether the Fair Deal decision of the Supreme Court in the Wisconsin anti-strike case invalidates the New Jersey statute simultaneously. It may be necessary to test our own statute, particularly because, unlike the Wisconsin statute, our law does not require compulsory arbitration in violation of the Taft-Hartley law.

Republicans have an opportunity to squash the Fair Deal by rallying their full strength behind a strong ticket in this year's interim elections and in the 1952 national elections. It will be possible here in Essex County to revive the traditional Republican majorities if Clean Government provides the kind of leadership and ticket that all independent Republicans can follow.

Within a week, the Clean Government Primary ticket must be filed. Six new nominees must replace six outgoing Assemblymen in Essex County. Three nominees for the Freeholders' Board must be named. Upon the choice depends the ability of the mass of independent Republican voters to tag along with Clean Government. If that can be done this year, the task of rallying a powerful Republican vote in 1952 will be all the easier.

**ONE MAN'S OPINION . . .**  
**A Meeting of the Big Four Would Lead Nowhere Except to Further Wrangling Unless It Can Lead to the Dissolution of the Cominform**  
By RALPH E. HEINZEN

The spate of bellicose news dispatches on the front page this week are a sign of the times. Diplomats are getting ready to talk "peace" and apparently the best backdrop for "peace" talks is a front page splashed with reports of new armament.

A new Four-Power conference is in the making if Moscow and the West ever can agree on its agenda. Instead of waiting to wrangle at the conference table, the diplomats have been wrangling since last November over what they will wrangle about when they start talking "peace." The latest proposal, coming from the West, is that the deputies of the four Foreign Ministers meet in Paris on March 5 to draw up the agenda. The West insists upon a broad discussion of all the basic problems which provoke the world's moral unrest; the Kremlin wants only to speak about "American imperialism," our "aggression in Korea" and the violation of the Potsdam agreement contained in the Western Powers desire to re-arm Western Germany.

If a Four-Power conference is really to accomplish anything, the agenda must allow a discussion of the lack of balance between Russia's undeveloped armed forces and the West's defensive forces, of German unification, of peace treaties for Austria and Hungary, of Soviet sabotage of the UN, of Soviet subversion and infiltration in Tibet, China, Indochina, Korea and Greece and, finally, Soviet subjugation and rearming of her Balkan allies, Rumania and Bulgaria, in violation of treaty engagements to a point where they threaten to set off the infamous Balkan powder barrel by hostile acts towards their western neighbor, Tito.

Waste of Time  
Moscow has made it clear that it expects the Big Four meeting to concern itself primarily with problems affecting Germany. The Kremlin has its way that discussion will concern specifically the intentions of the West to arm Western Germany. The Kremlin will try to avoid any discussion of the arming of Eastern Germany or its East European satellites.

Identical answers to Moscow, the three Western powers have made it clear that the agenda must be much wider to allow for a deep inquiry into many causes of the world's fear of impending war. There have been many such meetings of the four master minds in the past, but they got nowhere except into inextricable knots until, finally, General George C. Marshall, when he was Secretary of State, called them off three years ago.

By strict observance of the niceties of diplomacy, this next Big Four meeting should take place in Washington, but Stalin does not want to be put in a position of sending Vishinsky to the hated capitalist capital. He wants the meeting in some European capital, preferably Moscow, and such is our desire to get Russia across from us at a conference table for a frank talk about our common problems that our government is willing to make the trip to Moscow once again. When your cause is right, you need not weigh the angle of

Well Armed Cops  
It is the Soviet intention to give the Bereitschaften actual field training with its new Russian weapons in the spring alongside the Red Army in maneuvers in Eastern Germany. Where else in the world has a police force taken part in intensive war games?

In the meantime, a "World Peace Council" was convoked in Berlin this week by the Communists dedicated to "a united, peaceful, demilitarized Germany." The delegates to the "Peace Council" are drafting a formal protest against "American imperialist war aims" and against our announced intention of arming Western Germany.

To an intelligent Western mind, such sham seems childish, yet it must pay off because from year to year Russia adds millions of dupes to her supporting satellites. But when we discuss an agenda for a "peace" conference, how can we really hope for any concrete results when the Russians are engaged in such horseplay?

Soviet Duplicity  
In this "One Man's Opinion" another Big Four meeting, right now, would be a flop. Stalin's sincerity can be tested in other ways. Very significant is his latest maneuver as it concerns Germany. His latest notes to the Western powers have concerned an alleged violation of the Potsdam agreement in our announced intention of arming the Germans in our zone and incorporating them in the forces of the Atlantic Treaty powers.

Yet, while Stalin protests what we announce we intend some day to do, he is proceeding with the actual arming of East Germany. We are frank enough to say that we are desirous of building a German army. Stalin reports to the subterfuge of calling his army the "People's Police," yet Frankfurt dispatches this week told us that the "People's Police" has been equipped with Russian T-34 tanks, field artillery, anti-tank weapons and anti-aircraft guns. Isn't the pretense flimsy? What police force in the world protects its citizens against air attack? Even the German name of the "Police" is significant: Bereitschaften, which can best be translated as "alertness units."

Purge, Going On  
A great deal of importance must be attached to a Communist purge that has been in progress in East Germany since a fortnight and which has already claimed one victim of mark—Gerhard Eisler, the ex-vice who fled our shores to become the top man of German Communism. The skids were well buttered for him in this purge.

By its purge, Russia wants to separate the sheep from the goats in German Communism. To be retained as good Communists are those Germans who shed all independence of mind and agree to obey Russian commands. To be purged are the German "Titoists" who may have the normal amount of Communist dynamism but refuse subservience to Moscow.

These include many of the best-known "old revolutionaries" who fought Hitler and his Brown Shirts openly at Hamburg and elsewhere in the early days and then waged underground war and took terrible losses. What is happening today in Germany is true to the Communist pattern. Soviet diplomacy prepares the way for penetration, peaceful if possible. The Red Army or its high command moves in next to consolidate the native military force, and then the political commissars take over.

Under such conditions, in this "One Man's Opinion," a four-power conference is merely grist in Stalin's propaganda mill. No true peace can ever come out of anything in which Stalin is concerned except a terrific beating and each day gained sees us better able to administer it.

Today's purge and militarization in East Germany were yesterday's methods in Czechoslovakia, in Poland and Hungary and Rumania and Bulgaria. Once the Communists are established, they purge all elements except those faithful to the Politburo. Stalin is interested in no Communists except pro-Russian, pro-Stalin Communists.

Could anyone doubt now that Red Russia has designs on the whole of the world? Could anyone doubt that in mouthing the word "peace," as he is doing today, Stalin is arming his proteges and satellites? Could anyone doubt that Stalin is intent only on hugging us into a pacific somnolence while he makes ready for war? Could anyone doubt that if we ever again allow ourselves to reach the degree of weakness that we knew one year ago, Stalin will strike?

Pattern of Penetration  
Today's purge and militarization in East Germany were yesterday's methods in Czechoslovakia, in Poland and Hungary and Rumania and Bulgaria. Once the Communists are established, they purge all elements except those faithful to the Politburo. Stalin is interested in no Communists except pro-Russian, pro-Stalin Communists.

Under such conditions, in this "One Man's Opinion," a four-power conference is merely grist in Stalin's propaganda mill. No true peace can ever come out of anything in which Stalin is concerned except a terrific beating and each day gained sees us better able to administer it.

Under such conditions, in this "One Man's Opinion," a four-power conference is merely grist in Stalin's propaganda mill. No true peace can ever come out of anything in which Stalin is concerned except a terrific beating and each day gained sees us better able to administer it.

Under such conditions, in this "One Man's Opinion," a four-power conference is merely grist in Stalin's propaganda mill. No true peace can ever come out of anything in which Stalin is concerned except a terrific beating and each day gained sees us better able to administer it.

Under such conditions, in this "One Man's Opinion," a four-power conference is merely grist in Stalin's propaganda mill. No true peace can ever come out of anything in which Stalin is concerned except a terrific beating and each day gained sees us better able to administer it.

Under such conditions, in this "One Man's Opinion," a four-power conference is merely grist in Stalin's propaganda mill. No true peace can ever come out of anything in which Stalin is concerned except a terrific beating and each day gained sees us better able to administer it.

Under such conditions, in this "One Man's Opinion," a four-power conference is merely grist in Stalin's propaganda mill. No true peace can ever come out of anything in which Stalin is concerned except a terrific beating and each day gained sees us better able to administer it.

Under such conditions, in this "One Man's Opinion," a four-power conference is merely grist in Stalin's propaganda mill. No true peace can ever come out of anything in which Stalin is concerned except a terrific beating and each day gained sees us better able to administer it.

Under such conditions, in this "One Man's Opinion," a four-power conference is merely grist in Stalin's propaganda mill. No true peace can ever come out of anything in which Stalin is concerned except a terrific beating and each day gained sees us better able to administer it.

Under such conditions, in this "One Man's Opinion," a four-power conference is merely grist in Stalin's propaganda mill. No true peace can ever come out of anything in which Stalin is concerned except a terrific beating and each day gained sees us better able to administer it.

Under such conditions, in this "One Man's Opinion," a four-power conference is merely grist in Stalin's propaganda mill. No true peace can ever come out of anything in which Stalin is concerned except a terrific beating and each day gained sees us better able to administer it.

Under such conditions, in this "One Man's Opinion," a four-power conference is merely grist in Stalin's propaganda mill. No true peace can ever come out of anything in which Stalin is concerned except a terrific beating and each day gained sees us better able to administer it.

Under such conditions, in this "One Man's Opinion," a four-power conference is merely grist in Stalin's propaganda mill. No true peace can ever come out of anything in which Stalin is concerned except a terrific beating and each day gained sees us better able to administer it.

Under such conditions, in this "One Man's Opinion," a four-power conference is merely grist in Stalin's propaganda mill. No true peace can ever come out of anything in which Stalin is concerned except a terrific beating and each day gained sees us better able to administer it.

Under such conditions, in this "One Man's Opinion," a four-power conference is merely grist in Stalin's propaganda mill. No true peace can ever come out of anything in which Stalin is concerned except a terrific beating and each day gained sees us better able to administer it.

Under such conditions, in this "One Man's Opinion," a four-power conference is merely grist in Stalin's propaganda mill. No true peace can ever come out of anything in which Stalin is concerned except a terrific beating and each day gained sees us better able to administer it.

Under such conditions, in this "One Man's Opinion," a four-power conference is merely grist in Stalin's propaganda mill. No true peace can ever come out of anything in which Stalin is concerned except a terrific beating and each day gained sees us better able to administer it.

Under such conditions, in this "One Man's Opinion," a four-power conference is merely grist in Stalin's propaganda mill. No true peace can ever come out of anything in which Stalin is concerned except a terrific beating and each day gained sees us better able to administer it.

Under such conditions, in this "One Man's Opinion," a four-power conference is merely grist in Stalin's propaganda mill. No true peace can ever come out of anything in which Stalin is concerned except a terrific beating and each day gained sees us better able to administer it.

Under such conditions, in this "One Man's Opinion," a four-power conference is merely grist in Stalin's propaganda mill. No true peace can ever come out of anything in which Stalin is concerned except a terrific beating and each day gained sees us better able to administer it.

Under such conditions, in this "One Man's Opinion," a four-power conference is merely grist in Stalin's propaganda mill. No true peace can ever come out of anything in which Stalin is concerned except a terrific beating and each day gained sees us better able to administer it.

Under such conditions, in this "One Man's Opinion," a four-power conference is merely grist in Stalin's propaganda mill. No true peace can ever come out of anything in which Stalin is concerned except a terrific beating and each day gained sees us better able to administer it.

Under such conditions, in this "One Man's Opinion," a four-power conference is merely grist in Stalin's propaganda mill. No true peace can ever come out of anything in which Stalin is concerned except a terrific beating and each day gained sees us better able to administer it.

Under such conditions, in this "One Man's Opinion," a four-power conference is merely grist in Stalin's propaganda mill. No true peace can ever come out of anything in which Stalin is concerned except a terrific beating and each day gained sees us better able to administer it.

Under such conditions, in this "One Man's Opinion," a four-power conference is merely grist in Stalin's propaganda mill. No true peace can ever come out of anything in which Stalin is concerned except a terrific beating and each day gained sees us better able to administer it.

**HADASSAH GROUP GIVES COMEDY**  
**Belleville-Nutley Chapter To Presented Original Play, 'Don't Worry Sarah'**

The Annual Paid-Up Membership Party of the Belleville-Nutley Chapter of Hadassah was held Tuesday evening, at 8:30, in Temple B'nai Israel, 192 Centre Street, Nutley. A comedy-farce entitled "Don't Worry Sarah" was presented. This play with music, which was under the direction of Debby Cohen, came from an original idea by Sarah Fellman, president of the chapter. The dialogue and lyrics were written by Debby Cohen and Anne Cohen.

The large cast of Hadassah members from both towns included Carol Yudin, Kitty Kobrin, Elaine Schnell, Estelle Stein, Lilian Bretnier, Rheita Fuchs, Claire Newirth, Ethel Fischell, Lila Chapin, Loretta Lewis, Doris Zadickoff, Sylvia Hoch, Mildred Helling, and Rose Katowitz. Refreshments will be served during the social period following the performance.

**EAST NUTLEY GARAGE**  
C. A. FANELLI, Prop.  
Body and Fender Repairing  
Expert Auto Repairing  
Welding and Painting  
Phone: NUTLEY 2-6668  
55 Washington Avenue, Nutley, N. J.

**Clarifies Status Of College Grads On Selective Service**

Clarifying recent orders which directed that the statutory induction postponement of mid-term college and university graduates be continued for an additional 30 days after graduation, Colonel E. N. Bloomer, New Jersey Director of Selective Service, emphasized recently that there will be no "wholesale deferment" of these mid-term graduates.

"Considerable misunderstanding seems to have arisen," Colonel Bloomer said, "since the postponement announcement from the National Director was received, and the idea is abroad in some quarters that the bulk of these mid-term graduates—or at least very large numbers—would automatically receive deferments merely on the basis of their degree, or at least because they had a job almost any kind of a job."

Need Technicians  
Colonel Bloomer explained that "expanding defense program vitally needs a relatively few of these graduates—men who can qualify to hold highly technical positions," but he reiterated that relatively few would qualify. Procedure was outlined as follows:

If the graduate obtains employment in a defense industry activity "essential to the national health, safety or interest" within the 30 day period after mid-term graduation he submits the evidence to his local board, which will, if it considers the evidence warrants, reopen his classification to determine whether he meets the criteria for occupational deferment established in the Selective Service Regulations.

Deferment Reasons  
To qualify for occupational deferment under Selective Service Regulations, a registrant must meet these conditions:  
1. The registrant is engaged in an actively essential to the national health, safety or interest.  
2. The registrant is, but for seasonal or temporary interruptions, engaged full time in such activity.  
3. The registrant cannot be replaced because of a shortage of persons with his qualifications or skill in such activity; and  
4. The removal of the registrant would cause a material loss of effectiveness in such activity.

The Selective Service Act of 1948 provides that "any person who, while satisfactorily pursuing a full-time course of instruction at a college, university, or similar institution of learning is ordered to report for induction . . . shall, upon the facts being presented to the local board, have his induction . . . postponed (A) until the end of such academic year or (B) until he ceases satisfactorily to pursue such course of instruction, whichever is the earlier."

When a student ordered to report for induction graduates and leaves school the statutory reason for continuance of the postponement ceases to exist. Colonel Bloomer explained, "The 30-day postponement order simply continues that postponement another 30 days."

**Helen V. Davis Circle to Meet**  
The next meeting of the Helen V. Davis Circle of Grace Baptist Church will be held in the home of Mrs. Edward Puckhaber, 66 Malone Avenue. Mrs. Anne Allen and Mrs. Marjorie Davis will serve as co-hostesses. Mrs. Howard Rayer will be in charge of the group's Love Gift Program.

**First Quarter Dividend Declared By Public Service**  
The Board of Directors of Public Service Electric and Gas Company last week declared a dividend of 40 cents per share on the common stock for the first quarter of this year, payable on or before March 31, 1951 to stockholders of record March 2, 1951.

William H. Blake, vice-president and general solicitor, was elected a director to succeed Joseph T. Foster, vice-president, who died November 21, 1950.

**CENTER PLAYERS TO GIVE DRAMA**

Newark Jewish Community Center Performers To Present "The Man"

Giving variety to their series of plays, The Center Players of the Newark Jewish Community Center will offer a suspense drama "The Man" by Mel Dinelli as their next production. The two act thriller will be presented this Sunday at 8:30 p.m. in Fuld Hall at High and Kinney Streets, Newark.

Ruth Zalkin, of Kearny, N. J., a newcomer to the ranks of the Center Players, and Angelo Vitaranzo who has appeared in many outstanding Center productions during the past ten years will be in the starring roles. Supporting them will be Rosalie Levine, Dorri Irwin, Carl Hantz, Neil Fisher, and Harold Wolf. The play has been directed by Abe Irwin and the production is under the supervision of George H. Kahn.

Dancing will follow the performance with Paul Manning and his orchestra. The Doris Schary award committee of judges; Dr. Ralph Shapiro, Mrs. Joel V. Moppes, Laurence Light, and David Steinberg will attend the performance.

**Requiem Mass Held Friday For Mrs. Henry F. Devine**  
A solemn high mass of requiem was offered Friday morning in St. Mary's Church, Nutley, for Mrs. Susan Theresa Warner Devine of 26 Beech Street, who died Tuesday in St. Mary's Hospital, Passaic, after a long illness. The funeral was from the McDonough Funeral Home, 637 Broadway, Newark. Burial was in Gate of Heaven Cemetery.

A member of the Rosary Society of St. Mary's Church, Nutley, and the Independent Order of Foresters, Companion Court, Newark, Mrs. Devine was born in Philadelphia 67 years ago and lived in Newark before coming to Belleville in 1926.

She leaves her husband, Henry F. Devine; two daughters Mrs. William Connolly of Jersey City and Mrs. Robert Jackson of Newark; a brother, John Warner of East Orange; a sister, Miss Dora Warner of Linden, and four grandchildren.

**Tickets Still Available For Annual PBA Show March 31**  
Early purchase of tickets for the Belleville Patrolman's Benevolent Association show was urged this week, as time draws near for the affair scheduled at the high school on March 31. The PBA will hold a Broadway show this year, featuring top talent from radio and television.

In former years, the PBA has held a dance to raise funds for the organization but decided on the show this year. Tickets may be procured from members of the department.

**VEW Dollar Night Saturday**  
The Younger-Alten Post of the VEW will stage another of its popular Dollar Nights on Saturday at the Veteran's Hall on Belleville Avenue and Stephens Street. There will be dancing with music furnished by Andy Leonard's orchestra and refreshments will be served.

**Delaporte & Mac Kinnon**  
PLUMBING - HEATING  
TINNING  
70 Belleville Avenue  
Belleville, N. J.  
Phone BELleville 2-4323

**You'd be rich now**  
**If every time**  
**You'd earned a dollar,**  
**You'd saved a dime!**

**\* Moral:**  
Start right now. Saving is easy at this friendly institution! You can save any amount at any time, or save systematically. Your account, large or small, will be welcomed.

**Latest Dividend 2 1/2% per annum**

**DE WITT Savings**  
AND LOAN ASSOCIATION  
280 Washington Avenue, Belleville 9, N. J.  
Open Daily, 9 to 4; Monday Evenings, 6:30 to 8.

**SAVINGS INSURED UP TO \$10,000**



**Your thrifty one for '51**  
**...and for years to come!**

**Top value of the top 4 lowest price cars!**

**1951 STUDEBAKER CHAMPION**

**Champion of its price field every way!**  
**Stand-out styling and engineering!**  
**Truly amazing gasoline mileage!**  
**Studebaker quality throughout!**  
**The car to buy for real savings!**

**Lowest priced new type V-8!**  
**'51 STUDEBAKER COMMANDER V-8**  
**New pep and new power!**  
**Needs no premium fuel!**

**FORT MOTORS CO. OF N. J., INC.**  
**25 WASHINGTON AVE., BELLEVILLE, N. J.**

**WE are the RED CROSS**

The Red Cross belongs to us all. It is supported by voluntary contributions. It could not carry on its work, its great work, of giving and serving and sharing but for our continuing support.

A staff must be maintained, ready to furnish emergency aid. Equipment must be kept in order. Supplies of many kinds must be on hand. Once a year the Red Cross asks for funds. It is our Red Cross. It needs our help. It counts on us.

**Mobilize for Defense—Give NOW!**

Space taken by PUBLIC SERVICE



## ALUMNAE OF NJC HEAR SPEAKER

Dr. Norman Fletcher Will Address Group On Current Broadway Productions

The February meeting of the Essex County Alumnae Association of N. J. C. was held Wednesday evening at 8:00 in the East Orange Junior Women's Club. Dr. Norman Fletcher, minister of Unity Church, Montclair, N. J. gave "Comments on Current Plays" including "Black Chiffon," "The Cocktail Party," "The Golden State," "The Lady's Not for Burning," "Bill, Book and Candle," "King Lear," "The Country Girl," "An Enemy of the People" and "Second Threshold."

In 1948 Dr. Fletcher received first award of merit from Franklin D. Roosevelt Association of Montclair as the man who has done the most in that town for the advancement of the negro. He was Co-author with Clara Olsen of "Learn and Live," a book on the experiments in gearing education to the living needs of low-income groups in Kentucky, Florida, and Maine, promoted by the Alfred P. Sloan Foundation. In 1937 he collaborated with Prof. James Alexander of Princeton University, Leane Zugsmith, novelist, and Rockwell Kent, artist, in publicizing a pamphlet "On the Denial of Labor and Civil Rights in Hudson County, New Jersey," based on first-hand investigation of Mayor Hague's bailiwick. Dr. Fletcher received his B.A. at St. Lawrence University, Phi Beta Kappa, B.D., Canton Theological School, and D.D. from St. Lawrence University. He was formerly teacher of Biblical Literature at Bradford Junior College, Bradford, Mass. In an article in the New York Herald Tribune on the first year of "Death of a Salesman," Dr. Fletcher was cited as a minister who had preached a sermon on the play. He frequently speaks and preaches on plays.

## WOMAN'S CLUB TO GIVE ART AWARDS

Dessert Bridge Monday. Mrs. Diehl Wins Mad Hat Revue Prize

The art department of the Belleville Woman's Club under the direction of Mrs. W. Douglas Clark, chairman, will sponsor an art exhibition featuring work of local high school students, this Saturday from two until six, and Sunday from two until nine, at the clubhouse. The picture judged best in show will be sent to the Spring Art Exhibit of the Eighth Club District to be held in April. Ribbons will be awarded for various mediums, oils, water colors, black and white, and show card colors.

The St. Patrick's Day bridge will be held this Monday at 1:30 p.m. in the clubhouse. Proceeds will be used to fulfill the club's pledge to the Lutheran Hospital Fund. Mrs. Marvin Wallace is chairman of the event. On the committee are Mrs. William Allen Jr., Mrs. John Carrough, Mrs. Charles Gowie, Mrs. William Irvine Sr., Mrs. Charles Maise, Mrs. F. Kenneth Mase, Mrs. Louis Noll, Mrs. Clifton Smith, Mrs. Theodore Woelter, Mrs. Samuel Shaw and Mrs. Herbert Niles.

A Mad Hat Revue was staged by fifteen members following the covered dish supper on Washington's Birthday. Showing what husbands might expect if women designed their own hats were Mrs. Webster Diehl, who won the prize for her fabulous Panache Hat, Mrs. William C. North, Mrs. G. C. Miller, Mrs. Arthur E. Mayer, Mrs. John De Niro, Mrs. Arthur Clarke, Mrs. Frank Bridge, Mrs. Arthur G. White, Mrs. William Herb, Mrs. William D. Cornish, Mrs. Willard Strange and Mrs. James R. Reynolds. William Chapman announced the entrées, and the men in the audience acted as judges.

## Firemen Quell Blaze Discovered By Boy In Uncle's Home

Firemen quelled a blaze in the home of Victor Hart of 116 Crest Drive recently. According to the fire department, the fire started in the bedroom, where it was discovered by Tommy Hart, son of Mr. and Mrs. Wilbur Hart of 112 Floyd Street. He summoned his parents who immediately called firemen, who quickly brought the flames under control.

## Cenacle Card Party To Be Held In Waldorf-Astoria

Plans are being made for a card party to be held May 19, in the Starlight Roof of the Waldorf-Astoria, New York City, for the benefit of the Religious of the Cenacle, New Brunswick, New Jersey.

For further information contact The Cenacle, River Road, New Brunswick, or Miss Catherine Miller, ticket chairman, 15 Washington Street, 6th floor, Newark.

## Hospital Accepts Check From Kidde Workers



Harry Trotter, left, Lutheran Memorial Hospital trustee president, is shown accepting \$8,702 check from Thomas Perrota, employees' representative, with Stuart Grant of Walter Kidde Company looking on. The money was contributed to the hospital building fund by Kidde workers and represented overtime wages earned on a recent Saturday.

Lutheran Memorial Hospital's building fund yesterday was enriched by a check for \$8,702, donated by nearly a thousand employees of Walter Kidde & Co., Inc., Belleville, from overtime pay they earned by working on what would have been a Saturday off.

The Kidde employees worked on February 10, but final tabulation of salary statistics, plus individual donations, was not completed until this week. The check was turned over to Harry Trotter, president of the hospital board of trustees, by Thomas Perrota of Local 146, UAW-CIO, and Stuart Grant, Kidde advertising manager.

### Grateful Acceptance

In accepting the check on behalf of John F. Kidde, hospital campaign chairman who is away on a business trip, Mr. Trotter said the donation is "gratifying proof that working men and women in this area are aware of their responsibilities to others."

"Now we know that industrial employees in the region to be served by our new hospital will cooperate in the project," Mr. Trotter said. "This donation is a splendid example of the golden rule in action and with this action to serve as an example to other industrial workers, we are confident that our building fund will continue to grow."

Lutheran Memorial is seeking to raise \$2,800,000 for the erection of a 200-bed hospital overlooking Branch Brook Park at the Belleville-Newark boundary. It will serve an area of 125,000 residents and workers who are now lacking in hospital facilities.

### Others Plan Program

Plans for extension of the overtime pay formula to other industries in the area, were discussed at a meeting of the campaign's labor committee Tuesday night in the Fort-Hills Restaurant. Mr. Perrota, chairman of the group, reported that plans for donations by employees of L. Sonenborn & Sons and Westinghouse in Belleville, Westinghouse in Bloomfield, and the Bloomfield General Motors plant are now in the final stages.

The labor committee, made up of more than a score of union leaders in the Newark-Belleville-Bloomfield-Nutley area, has accepted a \$200,000 quota. The overtime pay plan has been officially sanctioned by various organized groups.

## Clergyman Appointed County Chairman For Cancer Drive

Appointment of Dr. Lloyd Ellis Foster, pastor of the historic Old First Presbyterian Church of Newark, as Essex County chairman of the 1951 cancer appeal was made this week. Alfred J. Peer, president of the Essex County Chapter of the American Cancer Society, made the announcement.

The annual campaign for cancer funds will be staged in April and the county quota has been established at \$186,500.

## J. K. GRIFFITH

WINDOW SHADE MANUFACTURER VENETIAN BLINDS

Table Pads - Traverse Rods  
308 Washington Ave.  
Nutley  
NU 2-1474  
Open Friday Evenings

## Zone Strategy Board Plan Offered By Civil Defense

### First Of Two Releases On Establishing Medical Stations, Personnel

(As a public service, The Times-News is printing herewith the first of two articles formulating a Zone Strategy Board under Emergency Medical Services for Civilian Defense. The plan has been devised by co-director Isadore J. Padula.)

**Zone, Strategy Boards and Board Responsibilities**  
Isadore J. Padula, Co-Director  
Emergency Medical Services  
Belleville Civil Defense Council

As Co-Director of Emergency Medical Services, I am firmly convinced that by operating our Civil Defense program through the Zone Strategy Board system we will be able to realize a highly co-ordinated program for the maximum of efficiency. For the benefit of the general public, I believe it is important that each citizen know how these zones will operate, and the responsibilities delegated to the members by the Civil Defense Council.

### Zone One

Zone One extends from Main Street to Union Avenue, and from Second River to Joralemon Street. Within this area we have the following important buildings: Town Hall, which contains the vital documents of the municipality, the Telephone Building so necessary to communications, the Public Library, two banks, six churches, three large schools, the Post Office, most of the business establishments and retail stores. Therefore this zone constitutes the core of our community life, and will need a strong Strategy Board with representation thereon of all interests centered in the zone. Initial membership to be enlarged.

### Initial Membership Zone One Strategy Board

Rev. John A. Struyk, Rev. Frederick Hubock, Rt. Rev. Joseph Kelly, Rabbi J. M. Swartz, Rev. H. E. Goldston, Dr. A. R. Caputo, Dr. D. Brown, Mrs. William Post, Mrs. Esther Rubin, Mrs. Irene Wieners, Mrs. Francis H. Saunders, Miss Margaret McLaughlin, Miss Lenore Rovell, W. C. Chapman, H. D. Kittle. One representative from each of the following: From each bank, from Chamber of Commerce, the Merchants' Association, each factory, each drug store, the Red Cross, Police, Firemen and Veterans' organization in Zone One and from the R.T.A.

Zone One Emergency Hospital, First Aid Stations, Ambulance Positions and Child Care Centers

### Emergency Hospital

## FARM POULTRY FRESH CENTER

378 CENTRE ST. NUTLEY 2-0081

At the Center

SPECIALIZING IN THE FINEST FARM FRESH EGGS — CUT UP, DRESSED AND BARBEQUED CHICKENS

Are Now Cooking Those Tender, Tasty, Natural Flavored

### BAR-B-Q CHICKENS

3 LBS. DRESSED 1.89 4 LBS. DRESSED 2.45

PLEASE PLACE YOUR ORDER AT LEAST 1½ HOURS IN ADVANCE

OPEN SUNDAYS 8 A. M. - 6 P. M.

## WARNING! to HOMEOWNERS



Your HOME Repairs Must Be Taken Care Of NOW While Materials

Are Available.

Special LOW off-season prices now in effect

- New Garages
- Attic Conversions
- Roofing & Siding
- Painting & Paperhanging
- Kitchen & Basement Remodeling

Direct Dealing With the Contractor Will Save Middle Man's Profit

Financing Arranged — Attractive Monthly Terms

## Cooperative Construction Corp.

44 PARK AVE. NUTLEY 2-9000 (Open Evenings) NUTLEY 2-5555

and one from each P.T.A. Emergency Hospital No. 2—

### Zone Two

At Public School No. 9.

### First Aid Stations

No. 1 at Christ Episcopal Church; No. 2 at Public School No. 3; No. 3 at Fewsmith Presbyterian Church; No. 4 at a location in Sector 9.

### Zone Headquarters

At Grace Baptist Church.

### Ambulance Stations

Washington Avenue at Greylock; Ralph Street at Bella Vista; and Little Street at Linden Avenue.

### Zone Number Three

Zone Number Three has two schools, one church, and the Municipal Stadium.

### Strategy Board Zone Three (Initial)

Mrs. Media Morse, Mrs. Mabel Cummins, Miss Marcherita Di Lorenzo, Miss Gloria Di Lorenzo, Mrs. W. H. Orth, Miss Mary Miller, Dr. Michael J. O'Grady, Mrs. John DeNike, Dr. Gerald J. Pischerchio, Dr. E. B. Failing, School Principals, P.T.A. representatives, and all other representation listed in other zones.

### Emergency Hospital No. 3

At Public School No. 5.

### First Aid Stations Zone Three

No. 1 at Public School 7. No. 2 at Chestnut Street near Franklin Avenue. No. 3 at Passaic Avenue at Mitchell Street. No. 4 at Luthran Church. No. 5 at Stadium.

### Zone Headquarters

At Public School No. 7.

(Balance of the plan will be concluded next week in The Times-News.)

## Mrs. John D. Lillenthal Dies After Long Illness

Funeral services for Mrs. Sadie May Boomer Lillenthal, 41 King Street, were held Saturday afternoon at the Irving Funeral Home, 276 Washington Avenue. Rev. John Struyk of Belleville Reformed Church officiated. Burial was in Crest Haven Cemetery, Clifton. Mrs. Lillenthal died Thursday at her home after a long illness.

A member of the Belleville Republican Club and the women's auxiliary of the Belleville Post, American Legion, she resided in Belleville for 28 years. Mrs. Lillenthal was born in Yonkers, New York, 59 years ago.

She is survived by her husband, John, two daughters, Mrs. Chester Daves of Clifton and Mrs. Marshall Hicks of Laurence Harbor; a son John H. of Newark; a sister, Mrs. I. Trommel of Belleville, and four grandchildren.

## Installation Of Officers Planned By 29th Division

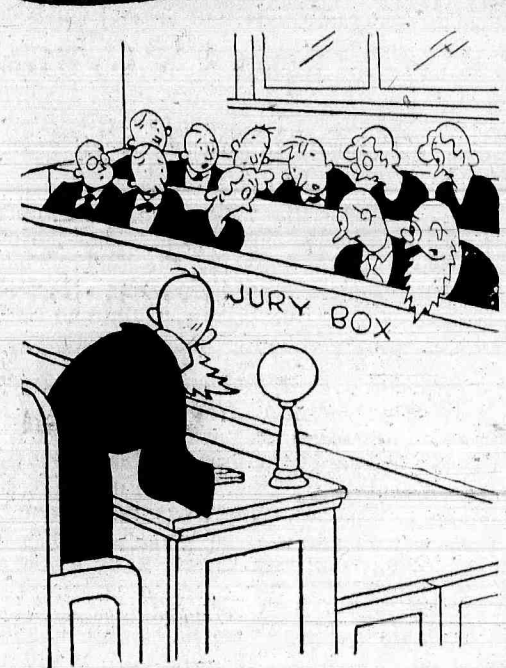
Installation of officers at an entertainment and dance will be held March 10 at the Hotel Douglas, it was announced this week by the Bois d'Ormont Post No. 57 of the 29th Division Association. William Konrad of Belleville is the outgoing commander. National Commander Charles R. Bryan of Virginia is expected to be on hand for the installation.

IT'S YOUR

RED CROSS

KEEP IT GOING

## Where's Elmer?!



## At FRANKLIN CASINO

... testifying to the deliciousness of the food we serve. Come in soon and "judge" for yourself!

## BUSINESS MEN'S LUNCHEON

SERVED DAILY 85c

## FRANKLIN CASINO BAR-RESTAURANT

338 FRANKLIN AVE. BETWEEN JORALEMON ST. AND BELLEVILLE AVE. BE-2-2111

## INCOME TAX

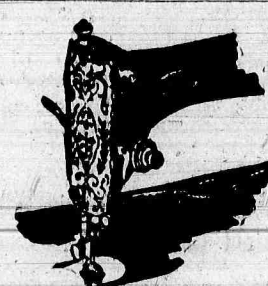
FINAL AND POSSIBLE ESTIMATED RETURN DUE BY MARCH 15TH

COMPETENT ASSISTANCE RENDERED IN PREPARATION OF INDIVIDUAL AND SMALL BUSINESS TAX RETURNS

Kindly Make Appointments Early

## GEO. S. MARK

81 BELL STREET BELLEVILLE, N. J. Tel. Belleville 2-5204



## PLAY SAFE!

To be sure of warranted

SINGER\* parts and guaranteed SINGER repairs...

call a SINGER expert when your sewing machine needs repairs.

Written estimate furnished in advance for your approval.

U.S. Pat. Off. by the SINGER Sewing Machine Co.

## SINGER SEWING CENTER

151 WASHINGTON AVENUE

BELLEVILLE 2-1255

BELLEVILLE

## MORTGAGE LOANS

on

Very Attractive Terms

PROMPT SERVICE

NORTH BELLEVILLE SAVINGS & LOAN ASSOCIATION

500 WASHINGTON AVENUE

BELLEVILLE 9, N. J.

Savings Insured Up to \$10,000 Federal Savings & Loan Insurance Corp.

## STORM DAMAGE

Promptly Attended to

All Roof -- Chimney Repairs

Leaders -- Gutters

## HAROLD HARRISON

313 CHESTNUT STREET KEARNY

KE 2-5497

## THERE IS GLAMOUR IN WELL-KEPT HAIR

TRY OUR

### PERMANENTS

Cold-Wave . . . . \$8.50 and up

Machine . . . . . \$7.50 and up

Open Every Friday Night

Phone for Appointments

Belleville 2-3528

## GLAMOUR

BEAUTY SALON

323½ UNION AVENUE

Corner Joralemon Street

Special This Week: Best Quality Nylons





# SPOTLIGHT

## on SPORTS

by Warren Knight

### Bellboys Brilliant With Triumph Over Montclair

Travers, McConnell Shine In 45-40 Tourney Victory Over Rugged Foe

Saints Grammar School Five Wins CYO County Title

Looking every bit like the champions they are, Belleville conquered a dogged Montclair five in a quarterfinal game last Friday to gain a semi-final berth in the Essex County Basketball Tournament. As predicted here last week, the Mounties carried the Bellboys right to the wire before succumbing to a Belleville rally in the final period, the score being 45-40.

Primarily, it was a team victory for the Bellboys, but the spark was supplied by Charlie Travers and Jim McConnell. Travers, in this writer's opinion, came up with one of the most brilliant efforts seen in many a moon. His floor play kept the team together when things looked black and his shooting and dribbling were spectacular.

#### Ties Up Star

McConnell, although exhausted to the point of collapse, did a tremendous job the second half holding the Montclair star, Wally Choice, scoreless, after Choice had racked up 15 points in the first two periods. Choice, riled by McConnell's tight guarding, started playing round near the end, ramming an elbow in McConnell's teeth and drawing a warning from the officials, plus a lusty hoot from the packed gymnasium.

Both teams gave an amazing exhibition of foul shooting. The Bellboys earned 13 out of 15 and it paid off. Even the Mounties had a good average, dunking 14 of 21 attempts. The officials, Earl Hoagland and Frank Jones, handled the game well, considering its tenseness and often rugged play.

#### Freeze Works

It was a thriller from start to finish. A great comeback by Belleville in the last eight-minute session wiped out a four-point deficit and then, with the minutes ticking away, the Bellboys staged a deep freeze, waived five fouls that saw two Mounties retired on personals and held on to the sphere until the final whistle. In this action-packed contest, McConnell rimmed two fifty hooks after faking Dick Emery out of position.

Travers, on several sorties, found holes in the Montclair defensive alignment and drove through for beautiful layups. Once he came the length of the court and another time flashed underneath the basket, couldn't get his shot away but kept dribbling toward the sideline, then whirled and flipped in a one-hander.

#### Choice Gets Hot

Playing clever basketball, the Bellboys moved well out front in the first period and had upped the lead at one point early in the second session to 19-11. Choice then went on a rampage. Fed looping passes by Royce Flippen, Jack Burke and Emery, the lanky center canned four field goals and as many fouls, and his last bucket, with five seconds left in the half, put Montclair out front, 22-20.

Defensively, the Bellboys were hampered during the Mountie surge by the absence of Bob Dilworth. Coach Wische's tallest per-

St. Peter's won the championship in Division I of the Grammar School Boys Basketball League last Sunday when it eked out a two-point, 23-21, decision over Our Lady of Good Counsel, Newark. The win, the second for St. Peter's in the elimination round, left the local quintet with an 8-0 record.

St. Peter's now will play the victor in Division II with the city championship at stake.

Another local representative in the loop, St. Anthony's, finished last after six straight losses.

former had to be pulled when he piled up four personals. That threw the burden on McConnell, who although topped by Choice in height and weight, tied the Montclair star in a knot with a blanket of arms and hands in Choice's pass.

#### Mark Of Champion

If Dean Hatcher had better luck on some of his layup tries, the outcome would have been settled earlier. But despite this, the young sophomore looked great. Twice, during the freeze that stiffened Montclair, Hatcher came from nowhere to save errant passes that appeared headed for the sidelines. And it was Hatcher that shook loose in the last 30 seconds to go in for a layup that completed the evening's festivities in glorious style.

Poise and the refusal to give up, a true mark of a titlist, contributed to the victory. Dick Godfrey and Freddy Engel, although not scoring prolifically, fitted in with the ball-handling scheme of things that proved important at the end.

Travers, with seven buckets and the same number of fouls, took scoring honors with 21 points. McConnell, getting his when they counted the most, netted 11. Emery, Mountie football and baseball whiz, pitched in five two-pointers and seven charity tosses for 17, while Choice's 15 gained runner-up honors.

#### The line-up:

|         | g  | f  | p  | Belleville | g  | f  | p  | Montclair |
|---------|----|----|----|------------|----|----|----|-----------|
| Flippen | 1  | 1  | 3  | McConnell  | 4  | 3  | 11 |           |
| Emery   | 5  | 7  | 17 | Travers    | 7  | 7  | 21 |           |
| Edwards | 0  | 0  | 0  | Dilworth   | 1  | 0  | 0  |           |
| Rose    | 0  | 0  | 0  | Benz       | 0  | 0  | 0  |           |
| Choice  | 5  | 5  | 15 | Godfrey    | 1  | 1  | 3  |           |
| Engel   | 0  | 1  | 1  | Hatcher    | 2  | 2  | 6  |           |
| Burke   | 1  | 0  | 3  | Engel      | 1  | 0  | 2  |           |
| Hubbard | 1  | 0  | 2  |            |    |    |    |           |
| Totals  | 13 | 14 | 40 | Totals     | 16 | 13 | 45 |           |

|            |   |    |    |       |
|------------|---|----|----|-------|
| Montclair  | 4 | 18 | 14 | 4-40  |
| Belleville | 7 | 13 | 12 | 18-45 |

Rebounds: Montclair 26, Belleville 23.  
Officials: Hoagland, Jones.

**24 HOUR SERVICE**  
BE. 2-2000  
**Belleville Yellow Cab**  
137 Washington Avenue  
At Belleville Avenue

### INCOME TAX SERVICE

Assistance in preparing 1950 Federal Income Tax returns. Capital gains and losses, rented property, sale of residence, fully covered.

CALL FOR APPOINTMENT

MR. RICHARD T. McMANUS

HUMBOLDT 5-6198

NEWARK

Belleville 2-1497

EYES EXAMINED

Dr. M. Roachvarg

OPTOMETRIST

Daily 10-12 — 2-6  
Evenings: Mon. to 8  
And by Appointment  
Wednesday to noon

132 Washington Avenue  
Belleville

GIVE TO THE RED CROSS

S. ROSE

EXCAVATING

CELLARS - SEWERS - ROADS  
GRADING - WATER LINES  
TRUCKING

324 NUTLEY AVENUE

NUTLEY, N. J.

Phone NU 2-2853

FOR APPOINTMENT PHONE NUTLEY 2-2853  
OFFICE HOURS: 9:00 A. M. TO 12 NOON  
EVENINGS: 7 TO 8 ON MON., WED., & FRI.

Harold J. Wolff, O.D.

EYE EXAMINATIONS

375 FRANKLIN AVE.  
Opposite Post Office  
NUTLEY, N. J.

"FREE PARKING IN REAR"

### BELLBOY COURT TEAM TO BE FETED BY VARSITY CLUB

Dinner March 27 Planned For Robin Hood; Les Armour Named Chairman

Preparations are under way for the annual banquet for the Belleville Varsity basketball team and coaches, sponsored by the Belleville Varsity Club. The affair honoring the schoolboys will be held March 27 at the Robin Hood Inn. Awards will be made to senior members of the squad.

Leslie Armour is chairman arranging the dinner and is being assisted by Vincent Baccarella, Arthur Bloemke, Ralph Casale and Frank Remis. Bloemke is president of the Varsity Club.

Tickets may be procured from any member of the club or at Belleville High School, Belleville Junior and Anderson and Fotherly's service station at Washington Avenue and Greylock Parkway.

#### Intermediate American

|           | g  | f  | p  | Belleville | g  | f | p  | Montclair |
|-----------|----|----|----|------------|----|---|----|-----------|
| Nelson    | 3  | 2  | 13 | Travers    | 4  | 4 | 19 |           |
| Davis     | 7  | 0  | 11 | Gashlin    | 4  | 2 | 10 |           |
| Cavanaugh | 4  | 4  | 11 | Johnson    | 4  | 1 | 9  |           |
| Johnson   | 2  | 6  | 10 | McConnell  | 2  | 0 | 5  |           |
| Wolfe     | 0  | 2  | 2  | Moore      | 1  | 2 | 4  |           |
| Del Santo | 1  | 1  | 3  |            |    |   |    |           |
| Totals    | 19 | 14 | 40 | Totals     | 16 | 9 | 41 |           |

|             | g  | f | p  | Belleville | g  | f | p  | Montclair |
|-------------|----|---|----|------------|----|---|----|-----------|
| St. Peter's | 3  | 0 | 6  | Vigilantes | 3  | 0 | 6  |           |
| DePiro      | 3  | 0 | 6  | Johnson    | 3  | 0 | 6  |           |
| Clavio      | 3  | 0 | 6  | Antonio    | 3  | 0 | 6  |           |
| McCluskey   | 4  | 2 | 10 | Thompson   | 4  | 3 | 11 |           |
| McManus     | 0  | 1 | 1  | Christy    | 0  | 0 | 0  |           |
| Gross       | 1  | 1 | 0  | Travers    | 1  | 1 | 0  |           |
| Murphy      | 1  | 0 | 2  | Pizzaglia  | 2  | 1 | 5  |           |
| Totals      | 13 | 5 | 31 | Totals     | 12 | 5 | 29 |           |

|              | g | f  | p  | Belleville | g  | f | p  | Montclair |
|--------------|---|----|----|------------|----|---|----|-----------|
| Boy's Sports | 2 | 5  | 9  | Cavaliers  | 2  | 5 | 9  |           |
| Zindel       | 2 | 5  | 9  | Lowrey     | 2  | 5 | 9  |           |
| Haneke       | 2 | 3  | 7  | Bridge     | 1  | 0 | 2  |           |
| Miller       | 1 | 1  | 3  | Partino    | 0  | 0 | 0  |           |
| Miller       | 1 | 0  | 0  | Fortunato  | 1  | 1 | 3  |           |
| Bloss        | 3 | 5  | 11 | Anderson   | 7  | 3 | 17 |           |
| Weston       | 1 | 1  | 3  | Alford     | 0  | 0 | 1  |           |
| Totals       | 9 | 15 | 33 | Totals     | 14 | 6 | 34 |           |

#### Senior "A" League

|          | g  | f | p  | Belleville    | g  | f | p  | Montclair |
|----------|----|---|----|---------------|----|---|----|-----------|
| Strate   | 3  | 0 | 6  | Phillips      | 9  | 3 | 21 |           |
| DePiro   | 11 | 2 | 24 | Carpele       | 4  | 0 | 8  |           |
| Smith    | 6  | 4 | 13 | LaCoppa       | 4  | 5 | 12 |           |
| Campbell | 3  | 3 | 8  | P.K. Leberman | 1  | 1 | 3  |           |
| O'Hare   | 3  | 2 | 10 | H.K. Leberman | 2  | 0 | 4  |           |
| Totals   | 29 | 9 | 66 | Totals        | 20 | 9 | 49 |           |

|           | g  | f  | p  | Belleville  | g  | f | p  | Montclair |
|-----------|----|----|----|-------------|----|---|----|-----------|
| Beneals   | 4  | 0  | 8  | Templeman   | 3  | 1 | 7  |           |
| R. Purdie | 4  | 0  | 8  | Groves      | 3  | 1 | 7  |           |
| R. Purdie | 1  | 1  | 3  | Vanzetti    | 3  | 1 | 7  |           |
| Lewis     | 4  | 0  | 8  | Gemmi       | 0  | 0 | 0  |           |
| O'Connor  | 3  | 1  | 11 | Griffin     | 3  | 1 | 7  |           |
| Kanase    | 1  | 0  | 2  | Naturale    | 6  | 2 | 14 |           |
| Jocko     | 1  | 0  | 2  | Cancellieri | 2  | 0 | 4  |           |
| Totals    | 12 | 10 | 34 | Totals      | 22 | 5 | 49 |           |

### Rider Strategy Backfires

West Side's Possession Tactics Eats Up Time as Poised Bellboys Play Own Game Backed By Sharpshooting Exhibition

With the form chart holding sway and fighting off the efforts of Old Man Upset, Belleville, seeded No. 1 in the Essex County tournament on the strength of a 15-1 record over the regular season, moved into the finals of the tourney Monday night at Seton Hall University. The Bellboys trampled a game West Side into defeat, 41-29, after letting the Rough Riders get a smell of victory and suddenly taking over to make the issue a certainty in the final stanza of the ball game.

Seton Hall, No. 2 in the tourney, gained the final with Belleville by plastering Central with a 53-40 setback. The Pony Pirates are seeded No. 2 in the draw.

#### Possession But No Points

West Side tried another tactic in the battle of strategy between opposing coaches but it didn't work. Coach Walt Bakum ordered his charges to play possession basketball and they followed his instructions to the letter. But they couldn't cope with the persistently tight defensive screen thrown up by the zone-aligned Golden Boys and without resorting to set shots as they should have, the Rough Riders pitched away their chances.

It was close enough, for a while. Jerry De Fabrizio, bushy-haired forward, did some fancy shooting, along with lanky Ernie Garratt and they kept the Riders in there the first half. Meanwhile, Jim McConnell and Charlie Travers were dipping in buckets every time the West Siders threatened to wrest the lead. After the score was tied five times the first two periods, the Golden Boys took a 20-18 edge on McConnell's push shot.

#### Sensational Shot

With only three seconds remaining in the half, Garratt drew a foul. Surprisingly, Bakum ordered the shot waived and the ball was passed in to Garratt, who made an amazing one-handed jump shot to tie the score, the ball going through the net as the buzzer sounded, making it 20-20.

After that, the Green fans had little to cheer about. They took their only lead in the ball game a minute after the third period began when De Fabrizio dunked a

### Petrean Pinners Pummeled In CYO Kegling League

St. Peter's fell to the bottom with a crash last Sunday when it lost three games to Blessed Sacrament, Newark, in the Intermediate Boys' CYO Bowling League. The Petreans now have lost six games in a row in the second half and have been written off as a titular contender.

Making last Sunday's defeats that much harder to swallow was the fact that Blessed Sacrament

foul, but Dick Godfrey canned a beautiful shot on a fast break and from there on the Bellboys gradually increased the spread and won going away.

In the last session, a modified freeze via a weaving pass attack ate up the time and shook loose McConnell and Travers for layups. Belleville gave the ball up only once in the last three minutes as the frantic Rough Riders, who were bigger and beefier, chased to no avail.

McConnell's 15 credits took scoring honors, with Travers collecting 11. It was another team victory, however, as the poised and cagey Bellboys played heads-up basketball.

#### The line-up:

|            | g  | f | p  | Belleville | g  | f | p  | Montclair |
|------------|----|---|----|------------|----|---|----|-----------|
| Garratt    | 4  | 4 | 12 | Travers    | 4  | 3 | 11 |           |
| Shiel      | 0  | 0 | 0  | McConnell  | 7  | 1 | 15 |           |
| Leinhart   | 0  | 0 | 0  | Dilworth   | 1  | 3 | 5  |           |
| Boland     | 2  | 0 | 4  | Godfrey    | 2  | 1 | 5  |           |
| Florezak   | 1  | 0 | 2  | Hatcher    | 1  | 0 | 2  |           |
| Cheney     | 1  | 0 | 2  | Engel      | 1  | 1 | 3  |           |
| DeFabrizio | 1  | 0 | 0  |            |    |   |    |           |
| McDermitt  | 0  | 0 | 0  |            |    |   |    |           |
| Totals     | 12 | 5 | 29 | Totals     | 18 | 9 | 41 |           |

|            |    |    |    |    |
|------------|----|----|----|----|
| Belleville | 11 | 9  | 12 | 41 |
| West Side  | 7  | 13 | 4  | 29 |

Rebounds: West Side 20, Belleville 23.  
Officials: West, Manfredi.

**JOHN G. YOUNG**

Plumbing - Heating - Oil & Gas Burners  
Kitchens Remodeled, Custom Built Cabinets  
Leader and Gutter Work  
Furnaces Vacuumed Cleaned

Use Our Budget Plan For Payment

14 New Street

Belleville 2-1476

# GIVE ME THIS '51 DODGE

## for long life...dependability



"I've driven Dodge cars for years...know from experience that you just can't beat a Dodge for DEPENDABILITY"

—Says Don B. Alford, Chicago, Ill.

Here's why Dodge delivers more miles per dollar

EVERYTHING about this great new '51 Dodge—the way it looks, feels, rides and handles—tells you that here's a car that's built to last. It's a car that's stunning to look at, with plenty of head, leg and shoulder room—a car that's engineered from bumper to bumper to last longer, go farther and deliver more miles per dollar over the years to come.

#### Spend Five Minutes With Us

Five short minutes behind the wheel will tell you why this is the car for you—for the years ahead.

You'll find that the new Off-Flow Shock Absorbers not only give you a truly new kind of ride—but the resulting smoothness and freedom from wheel "hop" and "bounce" mean less car wear, prolong car life. Driving is easier, safer, tension free.

Famous Dodge Fluid Drive, with its smoother starts and stops, "cushions" all moving parts from engine to the rear wheels—adds to the life of your Dodge, helps give better tire mileage, lowers maintenance costs.

#### Come In Today

See how you could pay \$1,000 more for a car and still not get all the extra room, handling ease, rugged dependability of this new '51 Dodge.

The 1951 Dependable  
**DODGE**

Just a few dollars more than the lowest-priced cars

**IGOE MOTORS, INC.**

73 Washington Avenue

Belleville, N. J.

### Local Runners CYO Threat

St. Peter's Grammar Team Has Record Entry In Saturday Chase; Flynn Tabbed as Repeat Winner in Upper Group

With a record entry of 40 boys in the grammar school division, St. Peter's is expected to make a determined bid to topple Sacred Heart, Vailsburg, from its titular perch at the fifth annual Essex County CYO track meet in the Newark Armory on Saturday.

In the past St. Peter's has been easily outdistanced by Sacred Heart, which has taken team titles in all three CYO divisions—grammar school, junior and intermediate—for the last four years. The Petreans are concentrating on the relay events, where Sacred Heart's strength lies, and has hopes of cutting the Red and White down to size.

#### DiMeo, Grausam Threats

Almost certain point winners are Phil DiMeo and John Grausam in the 90-pound class, where they will compete in the 60-yard dash and the 2-lap relay. The pair scored in their divisions last year. Another likely prospect is Joe Orlando, who placed first in last year's dash for 90-pounders. On Saturday he will be going in the 60-yard dash for 105-pounders and will also compete on the 2-lap relay team.

St. Peter's has relay teams in all five weight divisions and is concentrating on the 90 and 105-pound relays where two teams will compete. At least four men are entered in all the sprints except in the 120-pound class.

where Frank Costenbader will go it alone, and the unlimited division.

#### Flynn Set Record

As they did last year the Petreans are ignoring the intermediate and junior CYO runs except for one entry. But that entry should be enough to bring one title home to the local parish. The entry is Jim Flynn who will perform in the 440-yard run for intermediate CYO members.

Last year he was in the junior class and took that chase easily as he set a new meet record of 158.5. Since that time, was five seconds faster than that turned in by the intermediate winner, it can be seen why Flynn, unless he's bottled up in a large field, should be a repeat winner.

Veterans Paper Collection Will Be Held This Sunday

The regular monthly scrap paper collection, staged by the Frederick-Scott Ship Post, VFW, will be held on Sunday. Veterans mapping trucks will begin the pickup at 9 o'clock. Post Captain George Buchanan again stressed that no one but post members are authorized to make the collections. The VFW has been holding the pickup for the past three years.



# CYO Juniors In Title Game

## St. Peter's, St. Mary's Meet Sunday at Seton Hall For Essex County Second Round Honors in Cage Chase

Another Belleville-Nutley rivalry comes up for a decision Sunday afternoon at one o'clock in the Seton Hall University gymnasium, when the Division I Junior Boys teams of the CYO representing St. Peter's and St. Mary's lock in a titanic playoff. The rivals finished in a deadlock for second round honors with identical 4-1 records.

St. Mary's could have sewed up the second half championship last week but were handed a stunning setback at the hands of Holy Name of East Orange, 38-16. The Belleville Saints had ended their campaign a week previous and appeared out of the running.

Three of the top players depended upon by St. Peter's Sunday include Bernie Burns, Tony McGeehan and Dick Raymond. Against this trio Nutley will pit Vic Connelly, Marty Nolan and Frank Stefanelli.

# Looking Back In Sports

### Five Years Ago

The Belleville High School basketball team, which had been dogged by hard luck all season, was accepted for entry in the 1945-46 State Basketball Tourney. Their first opponent was Orange. In this game, the Belleville boys were stacked up against one of the county's outstanding cage aggregations. The teams did not meet in their regular season's contests, but played several mutual opponents, with Orange having the decided edge.

The St. Peter's girls bowling team met the Blessed Sacrament team and although the locals took two out of three, it was not enough to give them the lead for the first round of play. The lead was determined by the total number of games won, and Blessed Sacrament had the advantage in this respect. With the first round of play over the Blessed Sacrament group was in first place with thirteen wins and two losses. St. Peter's was in second place with twelve wins and three losses.

The St. Peter's Grammar School closed their season in the CYO sponsored Grammar School League. St. Antoninus of Newark, stopped the team in the elimination of 24 to 12. The Belleville team had a total of seven wins and four losses. This was their first season in the league.

The Junior Optimist's five, paced by Sam Chamberlain, won scored 13 points, crushed the Bill Leimer's Boys League, 43-21, at the Central School in Orange. Alverso and McConnell were also outstanding for the Belleville Juniors, and Brexton, De Tonia, and Porth lead the homesteam's attack.

The annual cage tussle between the Belleville Varsity Club "Old Timers" and the High School faculty was scheduled for the high school gym. All druggists were alerted to ready themselves for a rush on arnica, bandages, and everything recommended for sore muscles.

### Ten Years Ago

It was Victory Week for the Fewsmith Church basketball fives. In addition to the teams entered in the Church League laying further claim to second place honors by another triumph, the quintet leading the Newark Y. M. C. A. Church League whipped the Grace 33-21 and the Fewsmith Hornets ran wild at the Newark State Teachers College when they whitewashed the college's jayvee team 50-26. The spotlight was focused on the Y. M. C. A. entry which aspired to its third circuit championship. The boys laid further claim to the honor when they subdued the Grace Methodist Church quintet of Newark 33-21.

They may have been the hapless, winless Bellboys for the better part of the season but during the last week the Blue and Gold uncovered some real scoring punch for the season's wind-up. The quintet humbled Lyndhurst, Irvington and Dickinson on the local court. The weak Lyndhurst five was no match for the Zebras with Johnny Calicchio leading the way won 40-22. The locals stepped out in front of the Irvington lads to win 42-23, and rallied in the final period to win from the Dickinsonites 43-37. Calicchio was the difference between victory and defeat, registering a total of fifty points in the three games.

The Bethany Lutheran team rose up and broke the second-place tie in the Church League by clipping the St. Peter's quintet 25-19. Meanwhile Fewsmith Presbyterian and Italian Baptist won their games to remain in a deadlock for the runner-up position, while the first place Baptists were idle. Fewsmith had an easy time running over the Christ Church boys 38-11 while the Italian Baptists had some trouble before they finally subdued the sliding Belleville Reformed boys team 22-16.

In their first competitive even School No. 9 swimmers beat the Alvea Street team of Newark by two points. Robert Pudney won the twenty and forty yard free style in two fast sprints for Belleville. Edward Dowling came in first in the twenty-yard breast stroke. Alvea Street placed first in the balloon race and the six-man relay. The Valley boys had trouble bursting the balloons after swimming the first lap of the pool.

### Fifteen Years Ago

The high pinning of "Doc" Haycock, anchorman of the league-leading Lee's Tavern, was the outstanding hit in the local Tavern loop at Ferrara's alleys. The veteran pinsman slammed out scores of 233, 226, and 266 to give his team a two-out-of-three game over the Town Line Tavern.

Jack Donovan, the Boston Irish-American, declared that he would unmask the Blue Mask in their ninety-minute limit, best two out of three falls battle, at Columbia Park, Hudson Boulevard, North Bergen.

Bagging the twenty-fourth consecutive win, the league-leading R. C. A. picked up another game at Ferrara's trimming the Eastwood Neally for three games. The Belleville Manufacturers League leaders now had a six-game lead.

Employing their height to an effective advantage, the Dickinson High School basketballers whipped Coach McBride's Belleville 35-23 at the local gym. The Blue and Gold after defeating the Jersey City team a month and a half before by a 30-24 margin, slipped back to a new low to be set back by twelve points, the season's highest losing margin.

With the activities in the local Lions Club Bowling League merely a matter of completing the schedule, the Cubs and the Comets chalked up victories at the Elks' alleys. The Speedsters, the acclaimed winners of the circuit that year, were idle. A thirteen-pin edge in the third game gave the Cubs a two-out-of-three game win over the Bears, while the Comets upset the second-place Giants for the odd game. V. Hart of the Comets gained the prized dividends of the evening with a 201 tally in his second game.

### Twenty Years Ago

Belleville High's twelfth victory on the basketball floor that season, a 57-15 drubbing administered to Bonton High at the local court, was their means of chalking up the largest point tally in years of any high school five. Stan Goodrich, high scoring pivot man of the Blue and Gold brought his season's total up to 144 points during the run-away by finding the net for nineteen points.

"Mac" Lamb and Ray Smith also took leading roles in the slaughter by chiming in with thirteen and twelve points respectively. Nick Bonavita with seven points took care of any minor operations that the big three failed to handle.

The Belleville Elks' bowling squad played host to the Maple-

# NASH OF DODGE STARS IN LOOP

## Hits 658 To Pace Team To Triple Win Over Heinz Keglers

Joe Nash of Dodge Inc. starred at the last rolling of the Belleville Manufacturers' "A" League by scoring a 658 series and lead his team to a triple win over Heinz. His big series was made on games of 240-192-225. Joe Lane helped Nash by rolling a 605 series topped by a game of 220. These two series led to a 2810 set by Dodge. Bill McDowell topped Heinz with a 524 set.

The Prudential A.A. anchored by Tom Kietly with a 596 series topped by a game of 256 swept Standard Arcturus. Mike Condon was best for the tubemen with 544. Hanlon and Goodman anchored by Howard Velsage with a 602 night took one game from Federal Leather. The leathermen were paced by Angelo Capezzano with 552. In the other match of the night Nepeo upset Wallace & Tiernan in two games. Nepeo was topped by Phil Dohn with 586 while Bill Kienz anchored Watco with 542.

| TEAM STANDINGS      |       |       |          |
|---------------------|-------|-------|----------|
| W.                  | L.    | Aver. | H.S.     |
| Prudential A. A.    | 52    | 11    | 906 1042 |
| Federal Leather     | 46    | 17    | 892 998  |
| Wallace & Tiernan   | 44    | 19    | 872 992  |
| Dodge Inc.          | 34    | 20    | 860 977  |
| Hanlon & Goodman    | 31    | 32    | 851 980  |
| Nepeo               | 28    | 35    | 833 916  |
| Heinz               | 14    | 49    | 724 883  |
| Standard Arcturus   | 2     | 60    | 683 801  |
| INDIVIDUAL AVERAGES |       |       |          |
| G.                  | Aver. | H.S.  |          |
| Zingz, Pru*         | 60    | 193   | 251      |
| Connelly, Pru       | 63    | 186   | 251      |
| Koesia, FL          | 62    | 185   | 246      |
| Klemz, WT           | 60    | 182   | 221      |
| Velsage, HG         | 63    | 181   | 231      |
| Capezio, FL         | 51    | 179   | 237      |
| Kietly, Pru         | 48    | 179   | 226      |
| Provost, Pru        | 63    | 177   | 217      |
| Curtin, DI          | 60    | 175   | 215      |
| Budino, FL          | 63    | 177   | 233      |
| Schwarz, WT         | 63    | 176   | 231      |
| Hackett, WT         | 54    | 175   | 230      |
| Mohr, WT            | 60    | 175   | 224      |
| Cliffon, FL         | 63    | 175   | 248      |
| Pierston, Pru       | 60    | 174   | 221      |
| Slavovits, DI       | 63    | 174   | 210      |
| Nash, DI            | 60    | 171   | 246      |
| Capezzano, FL       | 63    | 174   | 233      |
| Lane, DI            | 63    | 174   | 233      |
| Murphy, HG          | 51    | 173   | 228      |

# Members Of Future Teachers Club Visit State College

The Belleville High School Future Teachers of America Club recently visited Newark State Teachers College, and went on guided tours throughout the building. They observed classroom teaching methods, then were taken to the Tutor room where they were served refreshments. The president of the College and some of the faculty members addressed the girls on school and teaching.

Members who made the trip, with Mr. Sifkin their advisor, were Louise Delmarco, Rita Carissimo, Barbara Hart, Dolores Bucco, Paula Thaler, Evelyn Lenahan, Mary Whitfield, Marilyn Everitt, Carol Hartly, Elaine Hahn, Audrey Maise, Miriam Giagerilli, Doris Kiss and Sheila Orlinky.

A visit to Montclair State Teacher's College is planned in the near future.

## KIERNAN

**DIGNIFIED FUNERAL SERVICE**

AVAILABLE TO ALL REGARDLESS OF FINANCIAL CIRCUMSTANCES

**NON SECTARIAN**

KIERNAN FUNERAL HOME

GEORGE F. KIERNAN

101 UNION AVE. BELLEVILLE 9, N.J.

BELLEVILLE 2-3503

## DEADLINE MARCH 15th INCOME TAX RETURNS (ALL TYPES) PREPARED

Mon., Wed., Thurs., 3-9 p.m.  
Tues., 9 a.m.-1 p.m., 6-9 p.m.  
Fri., 6-9 p.m.  
Sat., 10 a.m.-4 p.m.

234 WASHINGTON AVENUE  
2nd FLOOR  
NEXT TO THE BELLEVILLE POST OFFICE

## OF MAJOR IMPORTANCE

THROUGH THE YEARS our record has been one of constant progress. Our modern methods and unceasing effort, always directed toward lightening the burden of the bereaved, permit us to render the highest type of professional service at reasonable rates.

Why accept anything less? Services at the beautiful Irvine Funeral Home cost no more!

Serving Every Religion

## William V. Irvine and Son

Directors of Funerals

276 Washington Ave. Belleville 9, N. J.

## Smith Brothers

Lehigh Coal - Kopper's Coke

Fuel Oil

**OIL BURNERS**

74 ACADEMY ST. BELLEVILLE 9, N. J.

BELLEVILLE 2-1884

Just to Remind You to Give to the Red Cross

## Remember When

Five Years Ago

With the deadline set at midnight, eight more candidates came into the fore and announced their intentions of trying for re-election or election May 17. Those who filed petitions were Mayor Williams, Commissioner King, Commissioner Waters, Commissioner Mertz, Commissioner Noll, Lieut. James J. Tully, Gerard Ferrara, Humbert A. Guglielmo, Elmer Hyde, Robert Grubbs, Frank K. Palmieri, and Anthony Pascal.

R. F. Given, vice-president and general manager of the American Installation Credit Corporation announced in New York City, that the appointment of the First National Bank of Belleville, as a member of the American Automobile Bank Credit Plan of automobile financing for dealers and customers. F. J. McFadden, vice-president of the first National Bank, stated when interviewed that through the plan, the bank could offer the automobile dealers a dignified, low cost, company financing service designed to cover all of their requirements conveniently and without "red tape."

Director Joseph King, in charge

## Senior "B" League

| Outagers      | W. | L. | Aver. | H.S. |
|---------------|----|----|-------|------|
| Bitterman     | 6  | 0  | 0     | 0    |
| Clayton       | 3  | 4  | 0     | 0    |
| Scott         | 0  | 0  | 0     | 0    |
| Thayer        | 0  | 0  | 0     | 0    |
| Schlezzanin   | 3  | 3  | 0     | 0    |
| Crawell       | 0  | 0  | 0     | 0    |
| V. Citterelli | 3  | 0  | 0     | 0    |
| Paul          | 3  | 0  | 0     | 0    |
| A. Citterelli | 0  | 1  | 0     | 0    |
| Totals        | 12 | 8  | 32    | 26   |

## Intermediate National

| Brains     | W. | L. | Aver. | H.S. |
|------------|----|----|-------|------|
| Kittle     | 0  | 0  | 0     | 0    |
| Law        | 1  | 2  | 0     | 0    |
| Macneiro   | 3  | 0  | 0     | 0    |
| Natural    | 0  | 0  | 0     | 0    |
| Barrett    | 1  | 0  | 0     | 0    |
| Torrey     | 0  | 0  | 0     | 0    |
| Pelt       | 3  | 1  | 0     | 0    |
| Warrington | 2  | 2  | 0     | 0    |
| Prieto     | 2  | 0  | 0     | 0    |
| Totals     | 9  | 5  | 23    | 27   |

## Hans

| W.         | L. | Aver. | H.S. |    |
|------------|----|-------|------|----|
| Focheslo   | 0  | 1     | 0    | 0  |
| Frantz     | 1  | 0     | 0    | 0  |
| McCarthy   | 0  | 0     | 0    | 0  |
| T. Rothoff | 0  | 1     | 0    | 0  |
| Tromentino | 0  | 0     | 0    | 0  |
| Dr. Dunn   | 0  | 2     | 0    | 0  |
| Shultz     | 1  | 0     | 0    | 0  |
| Dunn       | 0  | 0     | 0    | 0  |
| Orlando    | 0  | 0     | 0    | 0  |
| Totals     | 8  | 6     | 24   | 21 |

## St. Peter's

| W.          | L. | Aver. | H.S. |    |
|-------------|----|-------|------|----|
| Heidt       | 2  | 0     | 0    | 0  |
| Ehrenberger | 3  | 1     | 0    | 0  |
| Jacksonson  | 1  | 0     | 0    | 0  |
| Pelt        | 1  | 1     | 0    | 0  |
| Cox         | 0  | 0     | 0    | 0  |
| Homer       | 0  | 0     | 0    | 0  |
| Zindel      | 0  | 0     | 0    | 0  |
| Palmdam     | 0  | 1     | 0    | 0  |
| McKann      | 1  | 0     | 0    | 0  |
| Giovannucci | 0  | 0     | 0    | 0  |
| McCarthy    | 0  | 0     | 0    | 0  |
| Gioebhe     | 2  | 1     | 0    | 0  |
| Totals      | 15 | 8     | 33   | 26 |

## IS YOUR FURNACE 11 YEARS OLD - OR MORE? HERE'S HOW YOU CAN SAVE

# Low cost\* modern heating! OIL BOILER

QUIET-smooth-running!  
HOT WATER-from the same unit!  
CLEAN-no oil smell or soot!  
Completely AUTOMATIC!

not this but this

ORDINARY FLAME-fuel-wasting because much heat escapes up chimney. Often dirty because all fuel is not burned.

G-E "TUN-BACK FLAME"-more heat from less fuel because flame scrubs combustion chamber two ways. Hot gases are trapped in chamber. Clean heat-fuel burns completely.

\*Home owners report fuel savings up to 30%

OTHER UNIQUE G-E fuel-saving design features: special G-E Burner Nozzle and "Heat Trap."

Let us tell you about the popular G-E OIL FURNACE for warm air heating systems. Ask us about amazing new Air-Wall Heating, too!

Phone for FREE home heating survey

## OUR CLASSIFIED SECTION BRINGS QUICK RESULTS

## Remember When

Five Years Ago

With the deadline set at midnight, eight more candidates came into the fore and announced their intentions of trying for re-election or election May 17. Those who filed petitions were Mayor Williams, Commissioner King, Commissioner Waters, Commissioner Mertz, Commissioner Noll, Lieut. James J. Tully, Gerard Ferrara, Humbert A. Guglielmo, Elmer Hyde, Robert Grubbs, Frank K. Palmieri, and Anthony Pascal.

R. F. Given, vice-president and general manager of the American Installation Credit Corporation announced in New York City, that the appointment of the First National Bank of Belleville, as a member of the American Automobile Bank Credit Plan of automobile financing for dealers and customers. F. J. McFadden, vice-president of the first National Bank, stated when interviewed that through the plan, the bank could offer the automobile dealers a dignified, low cost, company financing service designed to cover all of their requirements conveniently and without "red tape."

Director Joseph King, in charge

## Senior "B" League

| Outagers      | W. | L. | Aver. | H.S. |
|---------------|----|----|-------|------|
| Bitterman     | 6  | 0  | 0     | 0    |
| Clayton       | 3  | 4  | 0     | 0    |
| Scott         | 0  | 0  | 0     | 0    |
| Thayer        | 0  | 0  | 0     | 0    |
| Schlezzanin   | 3  | 3  | 0     | 0    |
| Crawell       | 0  | 0  | 0     | 0    |
| V. Citterelli | 3  | 0  | 0     | 0    |
| Paul          | 3  | 0  | 0     | 0    |
| A. Citterelli | 0  | 1  | 0     | 0    |
| Totals        | 12 | 8  | 32    | 26   |

## Intermediate National

| Brains     | W. | L. | Aver. | H.S. |
|------------|----|----|-------|------|
| Kittle     | 0  | 0  | 0     | 0    |
| Law        | 1  | 2  | 0     | 0    |
| Macneiro   | 3  | 0  | 0     | 0    |
| Natural    | 0  | 0  | 0     | 0    |
| Barrett    | 1  | 0  | 0     | 0    |
| Torrey     | 0  | 0  | 0     | 0    |
| Pelt       | 3  | 1  | 0     | 0    |
| Warrington | 2  | 2  | 0     | 0    |
| Prieto     | 2  | 0  | 0     | 0    |
| Totals     | 9  | 5  | 23    | 27   |

## Hans

| W.         | L. | Aver. | H.S. |    |
|------------|----|-------|------|----|
| Focheslo   | 0  | 1     | 0    | 0  |
| Frantz     | 1  | 0     | 0    | 0  |
| McCarthy   | 0  | 0     | 0    | 0  |
| T. Rothoff | 0  | 1     | 0    | 0  |
| Tromentino | 0  | 0     | 0    | 0  |
| Dr. Dunn   | 0  | 2     | 0    | 0  |
| Shultz     | 1  | 0     | 0    | 0  |
| Dunn       | 0  | 0     | 0    | 0  |
| Orlando    | 0  | 0     | 0    | 0  |
| Totals     | 8  | 6     | 24   | 21 |

## St. Peter's

| W.          | L. | Aver. | H.S. |    |
|-------------|----|-------|------|----|
| Heidt       | 2  | 0     | 0    | 0  |
| Ehrenberger | 3  | 1     | 0    | 0  |
| Jacksonson  | 1  | 0     | 0    | 0  |
| Pelt        | 1  | 1     | 0    | 0  |
| Cox         | 0  | 0     | 0    | 0  |
| Homer       | 0  | 0     | 0    | 0  |
| Zindel      | 0  | 0     | 0    | 0  |
| Palmdam     | 0  | 1     | 0    | 0  |
| McKann      | 1  | 0     | 0    | 0  |
| Giovannucci | 0  | 0     | 0    | 0  |
| McCarthy    | 0  | 0     | 0    | 0  |
| Gioebhe     | 2  | 1     | 0    | 0  |
| Totals      | 15 | 8     | 33   | 26 |

## IS YOUR FURNACE 11 YEARS OLD - OR MORE? HERE'S HOW YOU CAN SAVE

# Low cost\* modern heating! OIL BOILER

QUIET-smooth-running!  
HOT WATER-from the same unit!  
CLEAN-no oil smell or soot!  
Completely AUTOMATIC!

not this but this

ORDINARY FLAME-fuel-wasting because much heat escapes up chimney. Often dirty because all fuel is not burned.

G-E "TUN-BACK FLAME"-more heat from less fuel because flame scrubs combustion chamber two ways. Hot gases are trapped in chamber. Clean heat-fuel burns completely.

\*Home owners report fuel savings up to 30%

OTHER UNIQUE G-E fuel-saving design features: special G-E Burner Nozzle and "Heat Trap."

Let us tell you about the popular G-E OIL FURNACE for warm air heating systems. Ask us about amazing new Air-Wall Heating, too!

Phone for FREE home heating survey

## OUR CLASSIFIED SECTION BRINGS QUICK RESULTS

## Remember When

Five Years Ago

With the deadline set at midnight, eight more candidates came into the fore and announced their intentions of trying for re-election or election May 17. Those who filed petitions were Mayor Williams, Commissioner King, Commissioner Waters, Commissioner Mertz, Commissioner Noll, Lieut. James J. Tully, Gerard Ferrara, Humbert A. Guglielmo, Elmer Hyde, Robert Grubbs, Frank K. Palmieri, and Anthony Pascal.

R. F. Given, vice-president and general manager of the American Installation Credit Corporation announced in New York City, that the appointment of the First National Bank of Belleville, as a member of the American Automobile Bank Credit Plan of automobile financing for dealers and customers. F. J. McFadden, vice-president of the first National Bank, stated when interviewed that through the plan, the bank could offer the automobile dealers a dignified, low cost, company financing service designed to cover all of their requirements conveniently and without "red tape."

Director Joseph King, in charge

## Senior "B" League

| Outagers      | W. | L. | Aver. | H.S. |
|---------------|----|----|-------|------|
| Bitterman     | 6  | 0  | 0     | 0    |
| Clayton       | 3  | 4  | 0     | 0    |
| Scott         | 0  | 0  | 0     | 0    |
| Thayer        | 0  | 0  | 0     | 0    |
| Schlezzanin   | 3  | 3  | 0     | 0    |
| Crawell       | 0  | 0  | 0     | 0    |
| V. Citterelli | 3  | 0  | 0     | 0    |
| Paul          | 3  | 0  | 0     | 0    |
| A. Citterelli | 0  | 1  | 0     | 0    |
| Totals        | 12 | 8  | 32    | 26   |

## Intermediate National

| Brains     | W. | L. | Aver. | H.S. |
|------------|----|----|-------|------|
| Kittle     | 0  | 0  | 0     | 0    |
| Law        | 1  | 2  | 0     | 0    |
| Macneiro   | 3  | 0  | 0     | 0    |
| Natural    | 0  | 0  | 0     | 0    |
| Barrett    | 1  | 0  | 0     | 0    |
| Torrey     | 0  | 0  | 0     | 0    |
| Pelt       | 3  | 1  | 0     | 0    |
| Warrington | 2  | 2  | 0     | 0    |
| Prieto     | 2  | 0  | 0     | 0    |
| Totals     | 9  | 5  | 23    | 27   |

## Hans

| W.         | L. | Aver. | H.S. |    |
|------------|----|-------|------|----|
| Focheslo   | 0  | 1     | 0    | 0  |
| Frantz     | 1  | 0     | 0    | 0  |
| McCarthy   | 0  | 0     | 0    | 0  |
| T. Rothoff | 0  | 1     | 0    | 0  |
| Tromentino | 0  | 0     | 0    | 0  |
| Dr. Dunn   | 0  | 2     | 0    | 0  |
| Shultz     | 1  | 0     | 0    | 0  |
| Dunn       | 0  | 0     | 0    | 0  |
| Orlando    | 0  | 0     | 0    | 0  |
| Totals     | 8  | 6     | 24   | 21 |

## St. Peter's

| W.          | L. | Aver. | H.S. |    |
|-------------|----|-------|------|----|
| Heidt       | 2  | 0     | 0    | 0  |
| Ehrenberger | 3  | 1     | 0    | 0  |
| Jacksonson  | 1  | 0     | 0    | 0  |
| Pelt        | 1  | 1     | 0    | 0  |
| Cox         | 0  | 0     | 0    | 0  |
| Homer       | 0  | 0     | 0    | 0  |
| Zindel      | 0  | 0     | 0    | 0  |
| Palmdam     | 0  | 1     | 0    | 0  |
| McKann      | 1  | 0     | 0    | 0  |
| Giovannucci | 0  | 0     | 0    | 0  |
| McCarthy    | 0  | 0     | 0    | 0  |
| Gioebhe     | 2  | 1     | 0    | 0  |
| Totals      | 15 | 8     | 33   | 26 |

## IS YOUR FURNACE 11 YEARS OLD - OR MORE? HERE'S HOW YOU CAN SAVE

# Low cost\* modern heating! OIL BOILER

QUIET-smooth-running!  
HOT WATER-from the same unit!  
CLEAN-no oil smell or soot!  
Completely AUTOMATIC!

not this but this

ORDINARY FLAME-fuel-wasting because much heat escapes up chimney. Often dirty because all fuel is not burned.

G-E "TUN-BACK FLAME"-more heat from less fuel because flame scrubs combustion chamber two ways. Hot gases are trapped in chamber. Clean heat-fuel burns completely.

\*Home owners report fuel savings up to 30%

OTHER UNIQUE G-E fuel-saving design features: special G-E Burner Nozzle and "Heat Trap."

Let us tell you about the popular G-E OIL FURNACE for warm air heating systems. Ask us about amazing new Air-Wall Heating, too!

Phone for FREE home heating survey

## OUR CLASSIFIED SECTION BRINGS QUICK RESULTS

## Remember When

Five Years Ago

With the deadline set at midnight, eight more candidates came into the fore and announced their intentions of trying for re-election or election May 17. Those who filed petitions were Mayor Williams, Commissioner King, Commissioner Waters, Commissioner Mertz, Commissioner Noll, Lieut. James J. Tully, Gerard Ferrara, Humbert A. Guglielmo, Elmer Hyde, Robert Grubbs, Frank K. Palmieri, and Anthony Pascal.

R. F. Given, vice-president and general manager of the American Installation Credit Corporation announced in New York City, that the appointment of the First National Bank of Belleville, as a member of the American Automobile Bank Credit Plan of automobile financing for dealers and customers. F. J. McFadden, vice-president of the first National Bank, stated when interviewed that through the plan, the bank could offer the automobile dealers a dignified, low cost, company financing service designed to cover all of their requirements conveniently and without "red tape."

Director Joseph King, in charge

## Senior "B" League

| Outagers      | W. | L. | Aver. | H.S. |
|---------------|----|----|-------|------|
| Bitterman     | 6  | 0  | 0     | 0    |
| Clayton       | 3  | 4  | 0     | 0    |
| Scott         | 0  | 0  | 0     | 0    |
| Thayer        | 0  | 0  | 0     | 0    |
| Schlezzanin   | 3  | 3  | 0     | 0    |
| Crawell       | 0  | 0  | 0     | 0    |
| V. Citterelli | 3  | 0  | 0     | 0    |
| Paul          | 3  | 0  | 0     | 0    |
| A. Citterelli | 0  | 1  | 0     | 0    |
| Totals        | 12 | 8  | 32    | 26   |

## Intermediate National

| Brains   | W. | L. | Aver. | H.S. |
|----------|----|----|-------|------|
| Kittle   | 0  | 0  | 0     | 0    |
| Law      | 1  | 2  | 0     | 0    |
| Macneiro | 3  | 0  | 0     | 0    |
| Natural  | 0  | 0  | 0     | 0    |
| Barrett  | 1  | 0  | 0     | 0    |
| Torrey   | 0  | 0  | 0     | 0    |



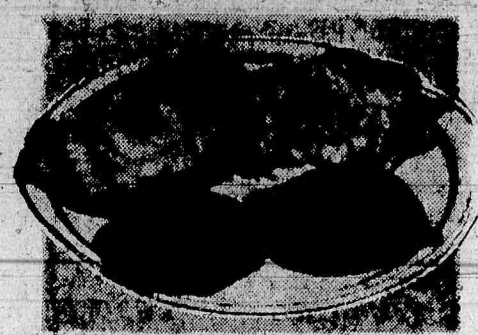
ALL PRICES IN OUR STORES ARE AT OR BELOW EXISTING CEILING PRICES



# ANOTHER GREAT FOOD FAIR BUYERS' WEEK!

EVERY-50-OFTEN our Buyer experts set forth to round up a group of values so outstanding... so superior in quality... so low in price that they merit YOUR special attention as a "BUYER," too!

Shop at Food Fair this weekend for these spectacular savings in addition to the big savings you find on our thousands of storewide everyday low prices!



**CRAB MEAT  
CAKES**  
2 for 35c

Distinctively different! Made in our own sanitary kitchen from pure fresh picked crab meat—deep fried to a golden brown with an edible cracker-type shell.



**SNOW CROP Frozen  
RASPBERRIES**  
12 oz. pkg. 33c

Just thaw and serve with cream and sugar for a delicious surprise dessert—or try 'em for making tarts. Priced exceptionally low!

## NEW!... JUST TOAST and SERVE — MAMMY'S WAFFLES

-- QUICK FROZEN --



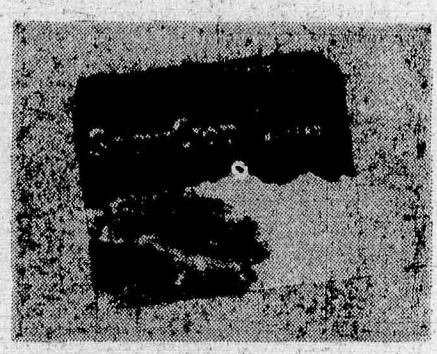
6 CRISP GOLDEN BROWN WAFFLES IN EACH PACKAGE 25c 3 pkgs. 73c

Perfect waffles in a minute!... Made from the same recipe used in the famous Mammy waffle kitchen! No defrosting necessary! Just place waffles in toaster (1 minute for non-automatic), set pop-up toaster at "medium"—serve hot with a cube of butter and syrup or top with jelly, preserves or chicken fricassee!



**KRAFT'S Famous  
VELVEETA**  
2 lb. loaf 95c

Kraft's famous quality brought to you at a real Buyers' Week Saving. Ideal to slice for sandwiches, or melt down for a smooth cheese sauce.



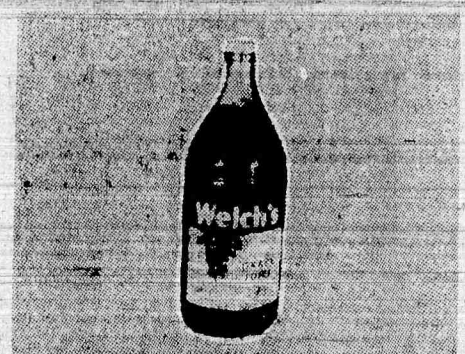
**SNOW CROP Frozen  
CUT CORN**  
10 oz. pkg. 17c

Tender golden kernels of sweet corn ready to heat and serve as a vegetable side dish—For a real treat, buy a package tonight and make corn fritters!



**AIRLINE Concentrated  
PRUNE JUICE**  
6 oz. can 10c

Mix with 3 parts water and you will have a delicious beverage, rich in natural vitamins and minerals. Stock up at this low price.



**WELCH'S  
GRAPE JUICE**  
24 oz. bot. 35c

Pressed from pure Concord grapes. Serve it alone or mix with other juices for a delightful fruit drink. Specially low priced now.



**FRE-MAR Pure  
Strawberry Preserves**  
12 oz. Jumb. 29c

Rich, honey-sweet strawberry preserves made from fancy, finest flavored North-western Marshall strawberries. Try them on Mammy's waffles!!



**N B C Crisp  
RITZ CRACKERS**  
lb. pkg. 29c

The famous crisp cracker that compliments everything with which it is served. Try it with our Edam Cheese. You'll love the combination.



**Imported from Holland  
EDAM CHEESE**  
6 port. pkg. 29c

Specially made and packed for Food Fair in Holland's land of cheese! Convenient individually wrapped six portions make a delightful TV tidbit!



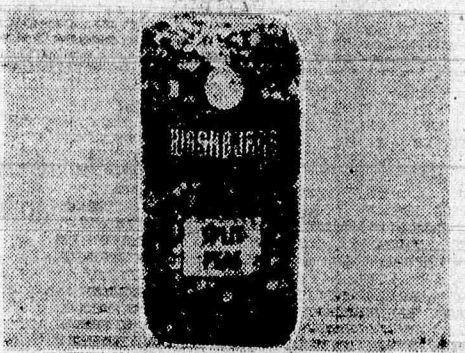
**HORMEL'S  
CANNED HAM**  
6 1/4 lb. can 6.75

Extra long keeping qualities make these cooked canned hams a great idea to have on hand for special occasions or unexpected company!



**WHITE ROSE Light Meat  
TUNA FISH**  
No. 1 can 33c

Specially selected of canned fish—White Rose famous quality, fancy light meat for salads, sandwiches or your favorite baked tuna dish. Priced low!



**WASHBURN'S  
GREEN SPLIT PEAS**  
lb. cello 10c

Makes the most delicious, nourishing soups. Your family will "go for" a steaming bowl of split pea soup on the blustery days ahead. Exceptional value!

### Fresh Fruits and Vegetables . . .

|                           |                  |              |     |
|---------------------------|------------------|--------------|-----|
| <b>Stringless Beans</b>   | FRESH TENDER     | 2 lbs.       | 25c |
| NONE PRICED HIGHER        |                  |              |     |
| <b>Delicious Apples</b>   | SELECTED WESTERN | 3 lbs.       | 27c |
| <b>Pascal Celery</b>      | JUMBO STALK      |              | 19c |
| NONE PRICED HIGHER        |                  |              |     |
| <b>Fresh Strawberries</b> | FLORIDA          | full pt. box | 27c |

### McCormick's TEA BAGS

|            |     |
|------------|-----|
| pkg. of 25 | 29c |
| pkg. of 50 | 53c |

### ACCENT SEASONING

|            |     |
|------------|-----|
| 1 oz. can  | 23c |
| 1 lb. cans | 27c |
| 8 oz. can  | 21c |

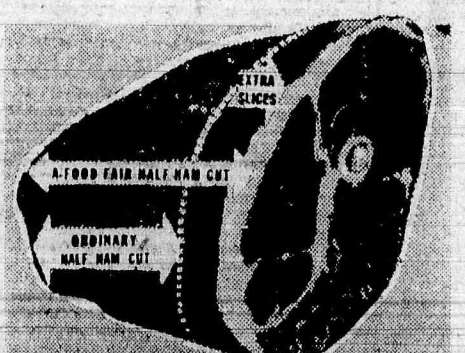
### CLAPP'S STRAINED BABY FOODS

|                   |     |
|-------------------|-----|
| 10 4 1/2 oz. jars | 97c |
|-------------------|-----|



**BELTSVILLE YOUNG FULL BREASTED  
TURKEYS**  
10 to 16 lbs. 59c

Specially bred turkeys that will give you more of that delicious white meat everyone loves. They're fresh killed, top quality, backed by our PSG bond.



**LOCALLY DRESSED  
FRESH HAMS**  
Full Cut Shank Half lb. 59c

A Food Fair shank half of ham gives you more of that good meaty center—with those extra slices left on! Another Buyers' Week Value!



**PSG BONELESS  
ROASTS**  
lb. 99c

Top Round—Bottom Round—Crossrib. Your favorite cut is here! All Food Fair beef is tender aged steer beef. You must be pleased or your money back!

### Fresh Fish and Seafoods! . . .

|                                       |     |     |
|---------------------------------------|-----|-----|
| <b>STEAK COD</b>                      | lb. | 29c |
| Golden Brown Texas (15 to 20 per lb.) |     |     |
| <b>Jumbo SHRIMP</b>                   | lb. | 79c |
| Ocean Caught Large Boston             |     |     |
| <b>MACKEREL</b>                       | lb. | 23c |

FOOD FAIR RESERVES THE RIGHT TO LIMIT QUANTITIES

|   |   |                                       |  |  |   |   |   |
|---|---|---------------------------------------|--|--|---|---|---|
| <b>Swift'ning</b><br>Swift's Shortening<br>3 lb. can 1.05 | <b>Hunt Club DOG FOOD</b><br>2 lb. bag 31c<br>5 lb. bag 69c | <b>SWIFT'S PREM</b><br>12 oz. can 49c | <b>FOOD FAIR OPEN LATE!</b><br>Thurs. 'til 9 P.M. - Fri. 'til 10 P.M.<br>SATURDAY— 8:00 a.m. to 6:00 p.m.<br>554 WASHINGTON AVENUE<br>BELLEVILLE | <b>SWIFT'S PEANUT BUTTER</b><br>12 oz. jar 35c | <b>SWAN WHITE FLOATING SOAP</b><br>2 large bars 31c | <b>DUZ DOES EVERYTHING</b><br>large pkg 32c | <b>RANGER JOE HONEY COATED CEREAL</b><br>2 6 oz. pkgs 27c |
|---|---|---------------------------------------|--|--|---|---|---|